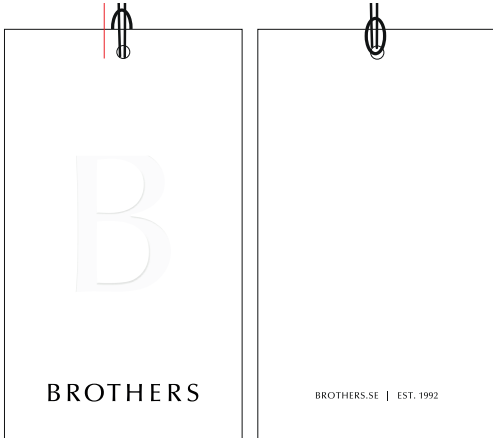


<b>Label:</b>  BROTHERS	<b>Description :</b> BROTHERS- RESORT SHIRTS	<b>Date:</b> 04/08/20 <b>Modification date:</b> 10 February 2026 2:20 pm
	<b>Label instruction no:</b> BRO-2003	<b>Design :</b> MKS

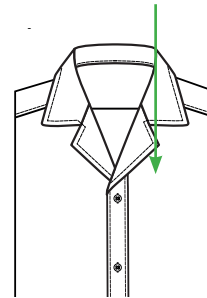
### Main hangtag BRO-900

FRONT      BACK



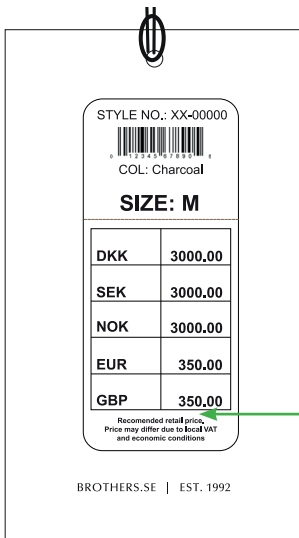
#### Tag placement

Hangtag must be fixed with knot at 1st button hole. See sketch below



FRONT

### Production sticker placement



**Price sticker placement**  
(for production only)

### SMS sticker placement



#### SMS sticker placement

Follow instruction no. :  
007 salesman sticker from  
Lindbergh

<b>Label:</b>  BROTHERS	<b>Description :</b> BROTHERS- RESORT SHIRTS	<b>Date:</b> 04/08/20 <b>Modification date:</b> 10 February 2026 2:20 pm
	<b>Label instruction no:</b> BRO-2003	<b>Design :</b> MKS

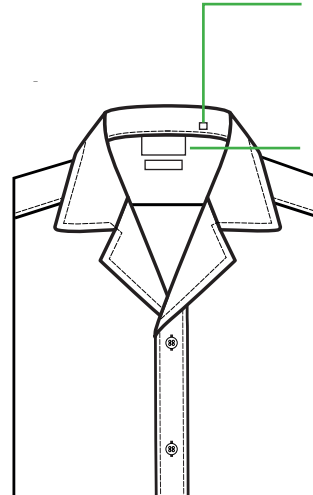
**LABEL BRO-802**



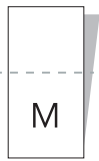
**PLACEMENT:**

Size label:  
Please place 6 cm  
from C.B at collar  
stand.

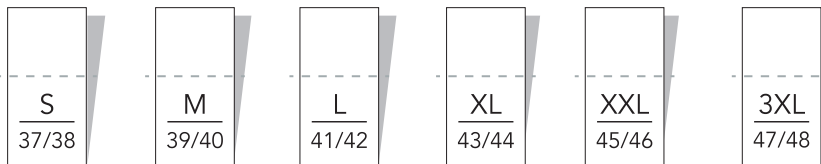
Neck label must be  
placed 1,5 cm below  
collar stand. Stitch  
only both sides (open  
top/bottom)



**SIZE LABEL REF. BRO-840:**



**SIZE LABEL REF. BRO-841:**



**PLEASE CHECK MEASUREMENT CHART FOR KIND OF SIZE LABEL**

<b>Label:</b>  BROTHERS	<b>Description :</b> BROTHERS- RESORT SHIRTS	<b>Date:</b> 04/08/20 <b>Modification date:</b> 10 February 2026 2:20 pm
	<b>Label instruction no:</b> BRO-2003	<b>Design :</b> MKS

PLEASE CHECK MEASUREMENT CHART FOR KIND OF FIT LABEL

STORYTELLING /FIT LABEL:

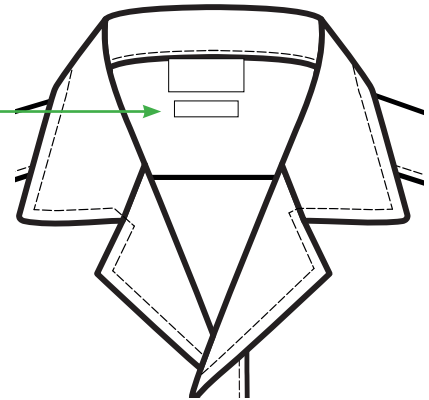


See program For label reference

**PLACEMENT :**

Below main label = 1 cm

Stitch both sides.  
Col. match label colour



2 STORYTELLING /FIT LABELS:



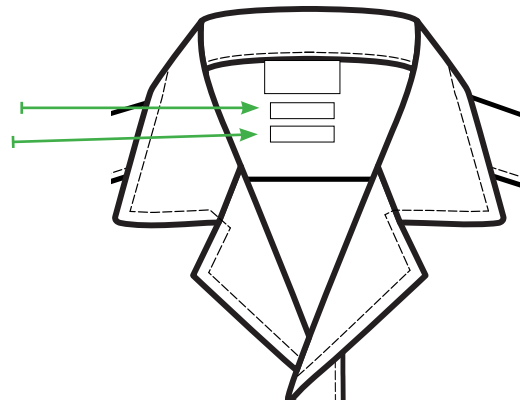
See program For label reference

**PLACEMENT :**

Distance between the storytelling labels is 1 cm

Stitch both sides.  
Col. match label colour

Fit / storytelling label 1  
Fit / storytelling label 2

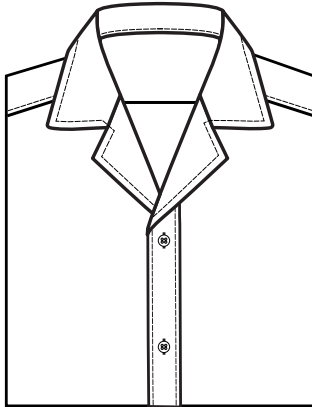


<b>Label:</b>  BROTHERS	<b>Description :</b> BROTHERS- RESORT SHIRTS	<b>Date:</b> 04/08/20 <b>Modification date:</b> 10 February 2026 2:20 pm
	<b>Label instruction no:</b> BRO-2003	<b>Design :</b> MKS

### Folding and packing instruction. Resort collar

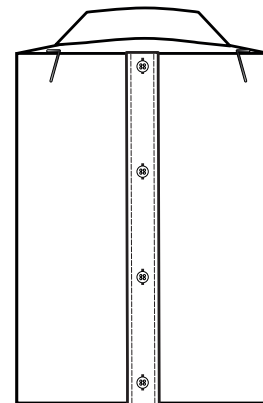
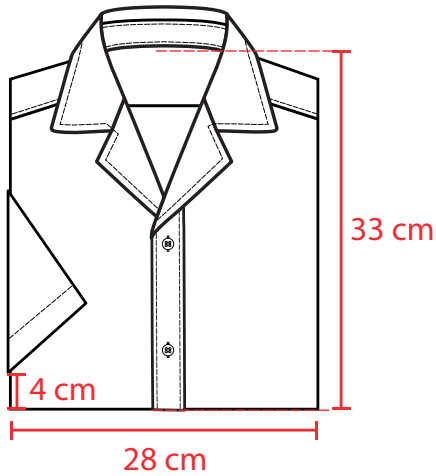
Folded and packed:  
Width: 28 cm  
Height: 33 cm

**L/S:**



No metal needle  
in the shirt

**S/S:**



Please use plastic clips  
to fix the shirt

### Tissue paper

