

Label: LINDBERGH	Date: 04/10/24 Modification date: 8 October 2025 1:06 pm	ONLY FOR 156 NEEDLE SOCK	Style no:
Description: Socks 5 pack - BAMBOO	Labels instructions no. LBA-9123	Design: TMA	

SOCK TAG _belly tag for 5-piece pack BAMBOO LBA-918



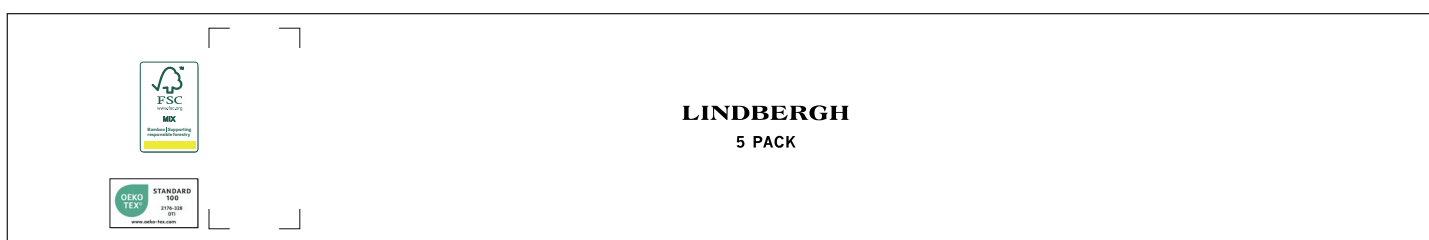
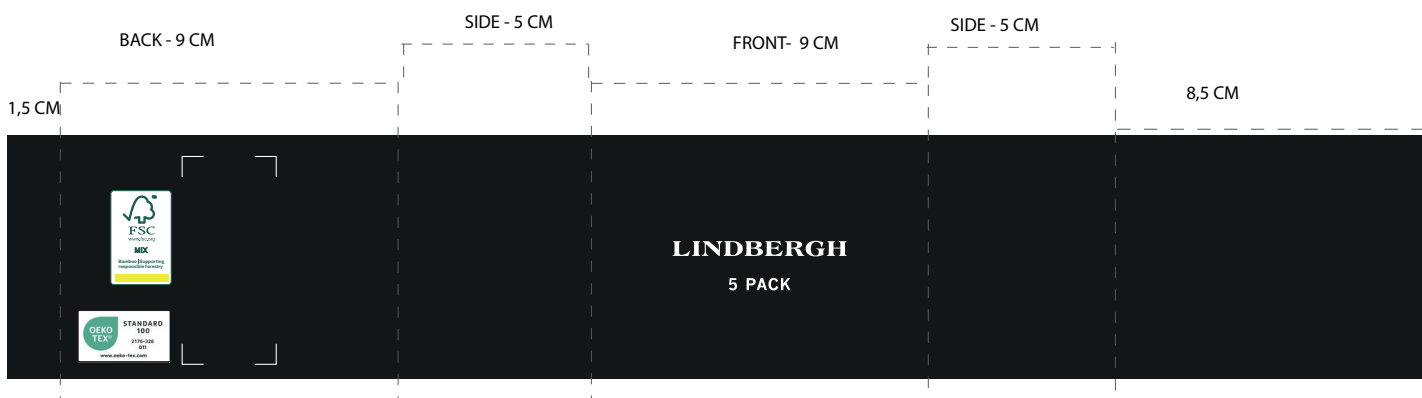
ARTWORK :

LINDBERGH
5 PACK

PLEASE MAKE LOGO
ON BELLY BAND SAME
SIZE AS LOGO ON
TAG. PLEASE FOLLOW
ARTWORK FROM LBA-918

Width: 65 MM
Lenght: 400 MM
Thickness: 0,4 mm

FINISH : PLICK SURFACE :



Label: LINDBERGH	Date: 04/10/24 Modification date: 8 October 2025 1:06 pm	ONLY FOR 156 NEEDLE SOCK	Style no:
Description: Socks 5 pack - BAMBOO	Labels instructions no. LBA-9123		Design: TMA

SOCK TAG - LBA-918

Same as LBH-B-957 with bamboo wording.

Quality:
Plick surface

Thickness :
As LBH-B-905

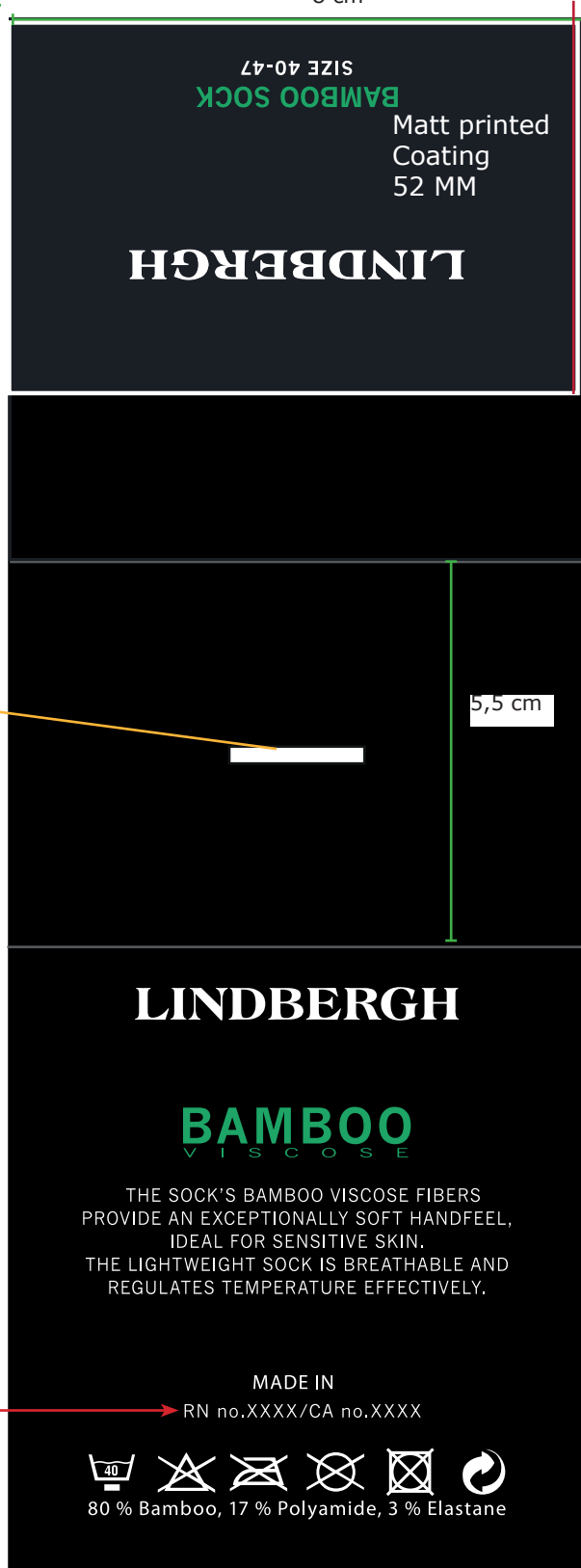
Technical Info	
Main colour	Black as main Hang tag
Text colour	White
Green col	Bright green 15-5534 TCX
Hook colour	Black
Hook quality	Plastic

Placement

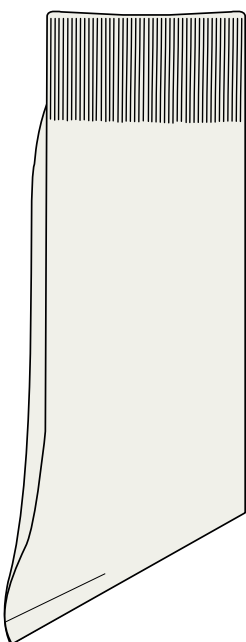


20,5 cm

8 cm



5,5 cm



Find correct RN and CA number in supplier manual under packing and labeling → special orders. Please center text, when correct number is added.

Always fold socks as directed.
Heels turning left and
Leg in front, -
Foot at back.

Label: LINDBERGH	Date: 04/10/24 Modification date: 8 October 2025 1:06 pm	ONLY FOR 156 NEEDLE SOCK	Style no:
Description: Socks 5 pack - BAMBOO	Labels instructions no. LBA-9123	Design: TMA	

FONT :

LINDBERGH : AS sketch

TEXT : New Gothic MT



LINDBERGH

BAMBOO
V I S C O S E

THE SOCK'S BAMBOO VISCOSE FIBERS
 PROVIDE AN EXCEPTIONALLY SOFT HANDFEEL,
 IDEAL FOR SENSITIVE SKIN.
 THE LIGHTWEIGHT SOCK IS BREATHABLE AND
 REGULATES TEMPERATURE EFFECTIVELY.

MADE IN
 RN no.XXXX/CA no.XXXX



80 % Bamboo, 17 % Polyamide, 3 % Elastane

Label: LINDBERGH	Date: 04/10/24 Modification date: 8 October 2025 1:06 pm	ONLY FOR 156 NEEDLE SOCK	Style no:
Description: Socks 5 pack - BAMBOO	Labels instructions no. LBA-9123	Design: TMA	

STICKER for salesmand sample

BARCODE for production



Follow instruction no. :
007 salesman sticker



Barcode Placement
(for production Only)
Place price Sticker at fixing Points.

Oekotex print logo:



Oeko-tex logo color ref:

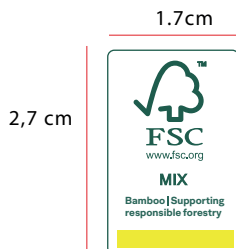
Label Design Guideline			
Colour Values			
	OEKO-TEX® Green	Black	White
PRINT			
Pantone U	Green U	Black U	-
Pantone C	Green C	Black C	-
CMYK	c84 m0 y17 k0	c0 m0 y0 k100	c0 m0 y0 k100
RAL DESIGN	5010 45	000 30 00	000 90 00
DIGITAL			
RGB	r0 g166 b135	r1 g1 k0	r255 g255 b255
HEX	#00A0C0	#000000	#FFFFFF



Placement : left side of barcode.
Align with barcode bottom.
- As sketch

FSC print logo:

Placement :



0,8 cm between



FSC logo color ref:

PANTONE
GREEN 626C
WHITE

IMPORTANT TO USE CORRECT SUPPLIER FSC NUMBER
ACCORDING TO PRODUCT