

<b>Label:</b> <b>LINDBERGH</b>	<b>Date:</b> 24/03/2023 <b>Modification date:</b> 13 November 2025 11:28 am	
<b>Description:</b> Label instruction for 3-pack PIMA COTTON boxers	<b>Labels instruc. No.:</b> LBA-9605	<b>Design:</b> AKR/MKS

**Box when folded**



<b>Label:</b> <b>LINDBERGH</b>	<b>Date:</b> 24/03/2023 <b>Modification date:</b> 13 November 2025 11:28 am	
<b>Description:</b> Label instruction for 3-pack PIMA COTTON boxers	<b>Labels instruc. No.:</b> LBA-9605	<b>Design:</b> AKR/MKS

## Box for 3 pack boxers. LBA-718

### Colours :



#### Main box col

BLACK	19-3911 TCX Black beauty
-------	-----------------------------

Window: see through plastic

#### SILVER TEXT

##### DEBOSSSED SILVER PRINT

Silver	as sample
--------	-----------

#### ALL other text col.:

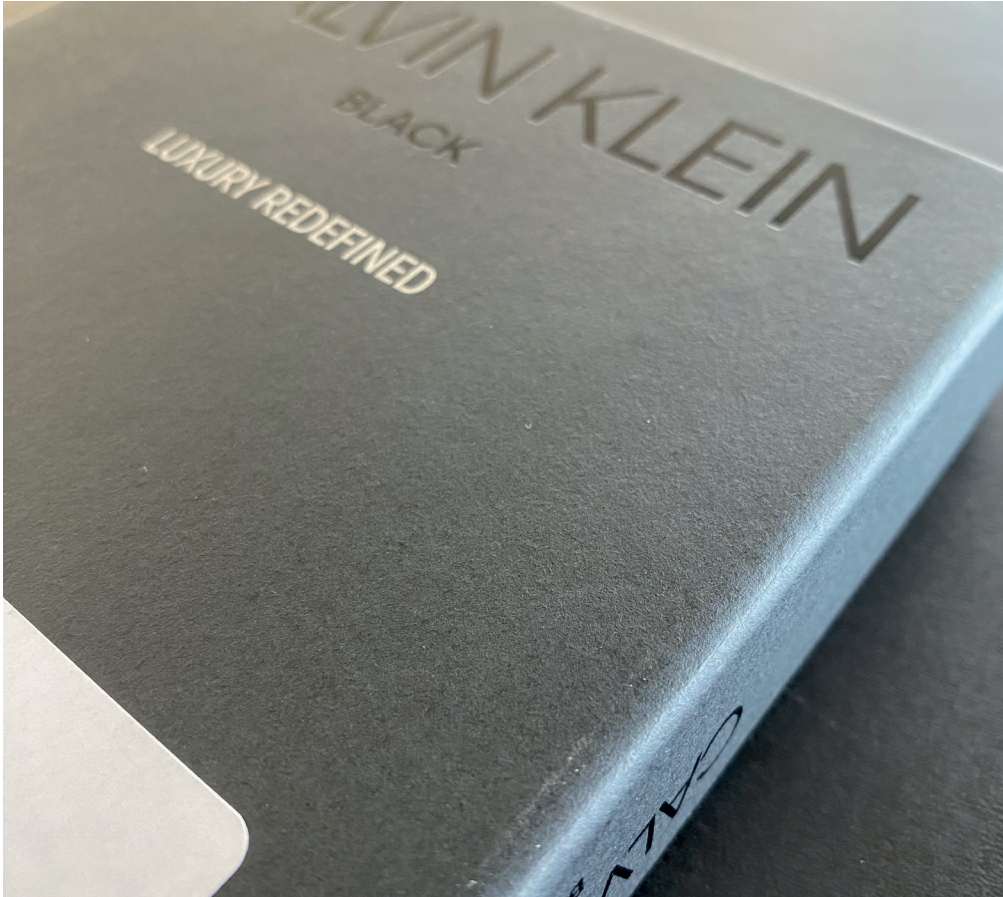
WHITE	11-4001 TCX Brilliant white
-------	--------------------------------

<b>Label:</b> <b>LINDBERGH</b>	<b>Date:</b> 24/03/2023 <b>Modification date:</b> 13 November 2025 11:28 am	
<b>Description:</b> Label instruction for 3-pack PIMA COTTON boxers	<b>Labels instruc. No.:</b> LBA-9605	<b>Design:</b> AKR/MKS

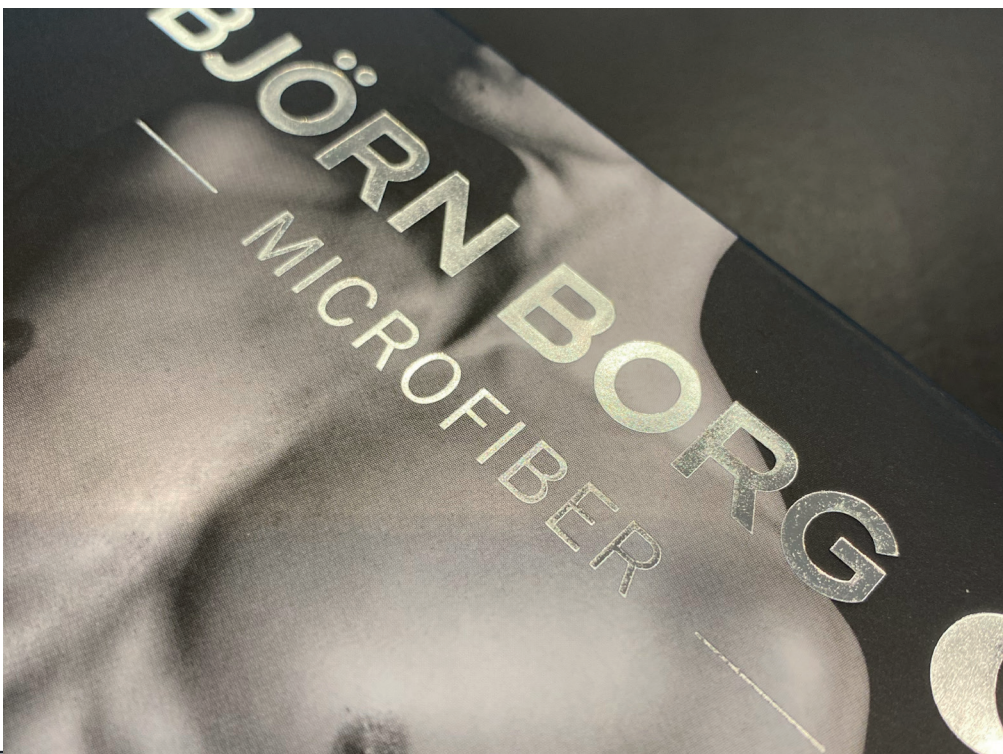
**Quality Instruction:**

PAPER AS BOX LBH-W-708, BUT HEAVIER QUALITY.

SURFACE: MATTE AS ON SAMPLE



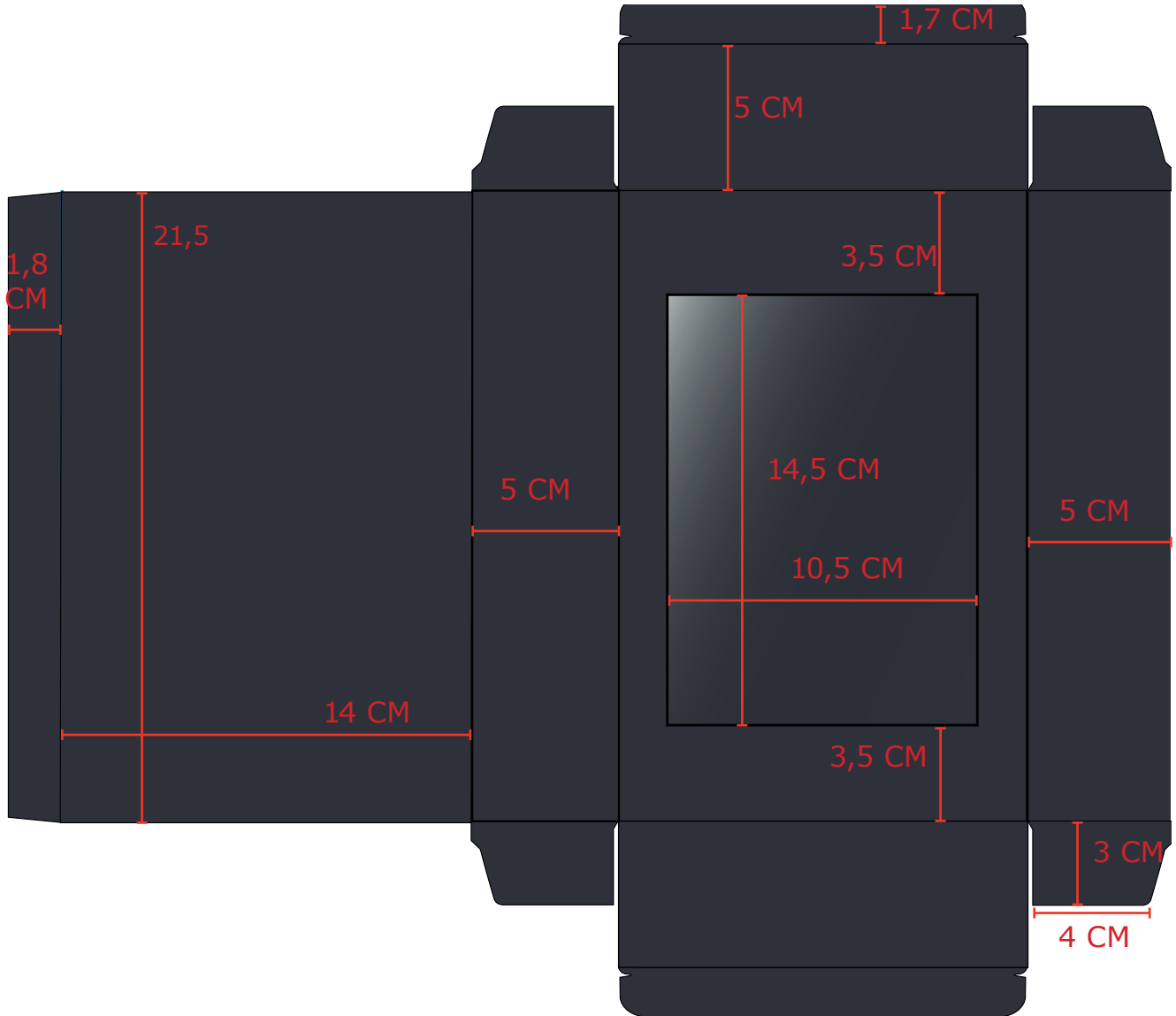
SILVER DEBOSSSED TEXT: COLOR AND DEBOSSSED AS ON SAMPLE



<b>Label:</b> <h1 style="margin: 0;">LINDBERGH</h1>	<b>Date:</b> 24/03/2023 <b>Modification date:</b> 13 November 2025 11:28 am	
<b>Description:</b> Label instruction for 3-pack PIMA COTTON boxers	<b>Labels instruc. No.:</b> LBA-9605	<b>Design:</b> AKR/MKS

## Folding Instruction:

BELOW DRAWING IS NOT TO SCALE



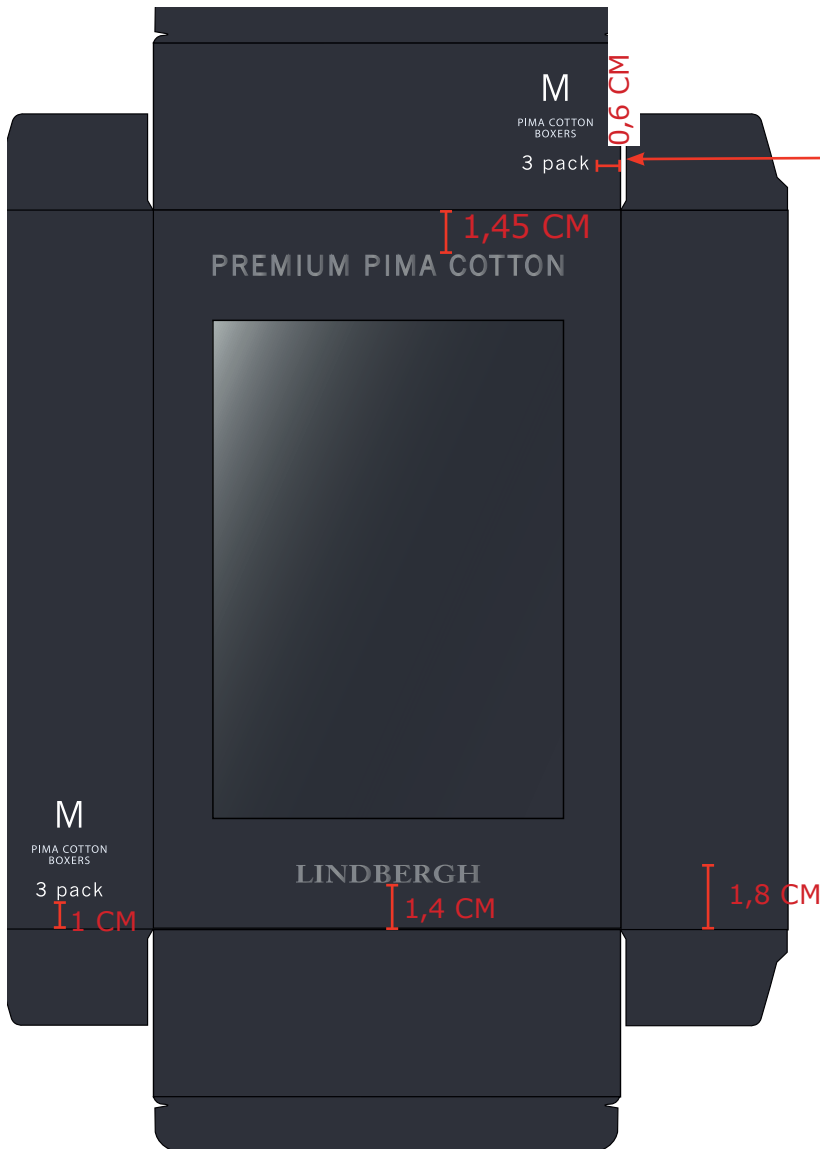
— Folding lines

● Box material

○ See through plastic


<b>Label:</b> <b>LINDBERGH</b>	<b>Date:</b> 24/03/2023 <b>Modification date:</b> 13 November 2025 11:28 am	
<b>Description:</b> Label instruction for 3-pack PIMA COTTON boxers	<b>Labels instruc. No.:</b> LBA-9605	<b>Design:</b> AKR/MKS

**Print placement:**



<p><b>M</b></p> <p>PIMA COTTON BOXERS</p> <p>3 pack</p>	<p><b>- Please use org. print file and change Size on box accordingly</b></p>
<p>width: 2,2 cm Height: 3 cm</p>	

<p><b>Logo</b></p> <p><b>LINDBERGH</b></p> <p>Width: 7 cm Height: 0,7 cm</p>
----------------------------------------------------------------------------------

<p>DEBOSSSED SILVER PRINT</p> <p>as sample </p> <p><b>PREMIUM PIMA COTTON</b></p> <p>Width: 10,5 cm Height: 0,6 cm</p>
-----------------------------------------------------------------------------------------------------------------------------------------------------------------------------------------------------------------

<b>Label:</b> <b>LINDBERGH</b>	<b>Date:</b> 24/03/2023 <b>Modification date:</b> 13 November 2025 11:28 am	
<b>Description:</b> Label instruction for 3-pack PIMA COTTON boxers	<b>Labels instruc. No.:</b> LBA-9605	<b>Design:</b> AKR/MKS

S

PIMA COTTON  
BOXERS

3 pack

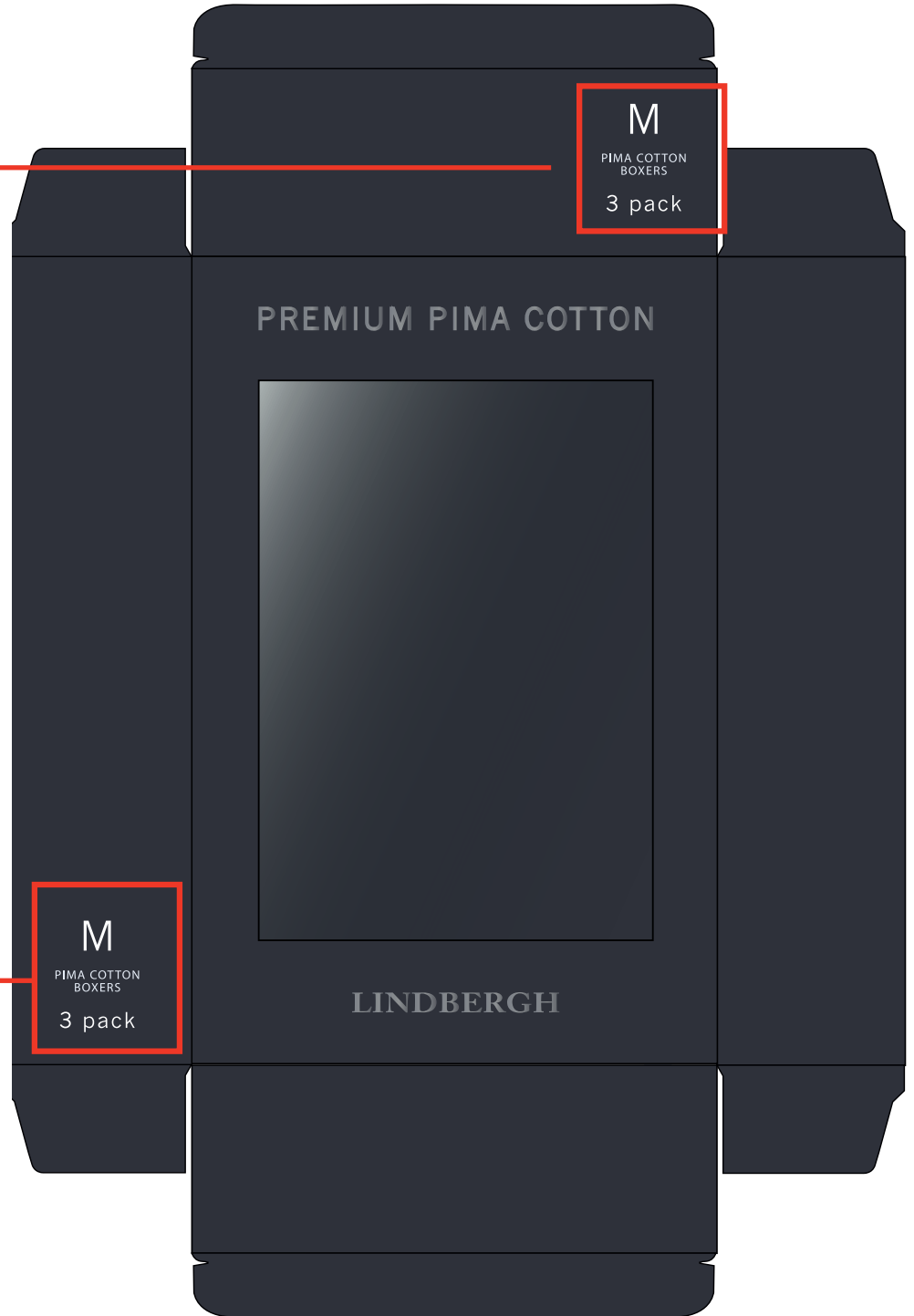
**Print for size :**

**- Please use org. print file and change size on box accordingly**

M

PIMA COTTON  
BOXERS

3 pack



M

PIMA COTTON  
BOXERS

3 pack

L

PIMA COTTON  
BOXERS

3 pack

XL

PIMA COTTON  
BOXERS

3 pack

M

PIMA COTTON  
BOXERS

3 pack

2XL

PIMA COTTON  
BOXERS

3 pack

3XL

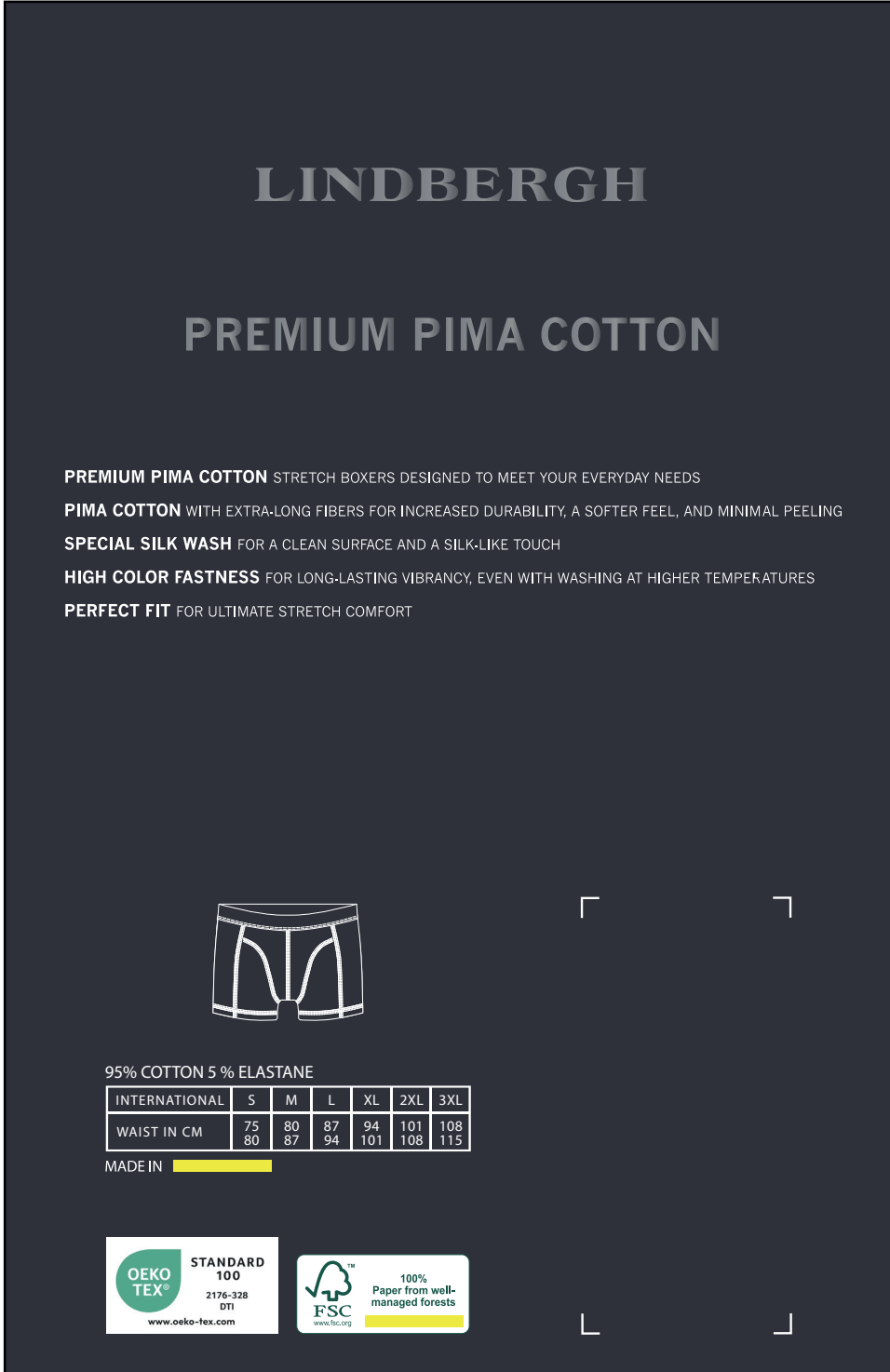
PIMA COTTON  
BOXERS

3 pack

LINDBERGH

<b>Label:</b> <b>LINDBERGH</b>	<b>Date:</b> 24/03/2023 <b>Modification date:</b> 13 November 2025 11:28 am	
<b>Description:</b> Label instruction for 3-pack PIMA COTTON boxers	<b>Labels instruc. No.:</b> LBA-9605	<b>Design:</b> AKR/MKS

**Print : Back**



**Back print:**

DEBOSSSED SILVER PRINT



**PLEASE INSERT CORRECT MEASUREMENT FROM MEASUREMENT CHART FOR "WAISTBAND IN CM"**

<b>Label:</b> <h1>LINDBERGH</h1>	<b>Date:</b> 24/03/2023 <b>Modification date:</b> 13 November 2025 11:28 am	
<b>Description:</b> Label instruction for 3-pack PIMA COTTON boxers	<b>Labels instruc. No.:</b> LBA-9605	<b>Design:</b> AKR/MKS

STICKER for salesmand sample



Follow instruction no. :  
007 salesman sticker

BARCODE for  
Production

Barcode  
Placement  
(for production  
Only)  
Place price  
Sticker at fixing  
Points.

XX-00000  
678001  
harcoal

**M**

3000.00
3000.00
3000.00
350.00
350.00

retail price,  
due to local VAT  
conditions

STYLE NO.: XX  
12345678  
COL: Charc

**ONE SI**

30
30
30
3
3

Recommended retail  
Price may differ due to  
and economic conc

Oekotex print logo:



Oeko-tex logo color ref:

Label Design Guideline  
Colour Values

	Oeko-TEX® Green	Black	White
<b>PRINT</b>			
Pantone U	Green U	Black U	-
Pantone C	Green C	Black C	-
CMYK	c84 m0 y57 k10	c0 m0 y0 k98	c0 m0 y0 k10
RAL DESIGN	700 60 45	000 30 00	000 P0 00
<b>DIGITAL</b>			
RGB	r0 g166 b135	r5 g0 b5	r255 g255 b255
HEX	#00AC8C	#050505	#FFFFFF

Label Design Guideline  
Safe Zone + Placement



FSC print logo:



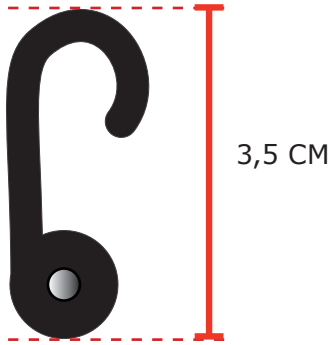
FSC logo color ref:

**PANTONE**  
**GREEN 626C**  
**WHITE**

**IMPORTANT TO USE CORRECT SUPPLIER FSC NUMBER  
ACCORDING TO PRODUCT AND BOX**

<b>Label:</b> <h1>LINDBERGH</h1>	<b>Date:</b> 24/03/2023 <b>Modification date:</b> 13 November 2025 11:28 am	
<b>Description:</b> Label instruction for 3-pack PIMA COTTON boxers	<b>Labels instruc. No.:</b> LBA-9605	<b>Design:</b> AKR/MKS

**Plastic hook with metal split**



centered on box



<b>Label:</b> <h1>LINDBERGH</h1>	<b>Date:</b> 24/03/2023 <b>Modification date:</b> 13 November 2025 11:28 am	
<b>Description:</b> Label instruction for 3-pack PIMA COTTON boxers	<b>Labels instruc. No.:</b> LBA-9605	<b>Design:</b> AKR/MKS

## Label instructions:

Find correct RN and CA number in supplier manual under packing and labeling → special orders. Please center text, when correct number is added.

### Made in sticker

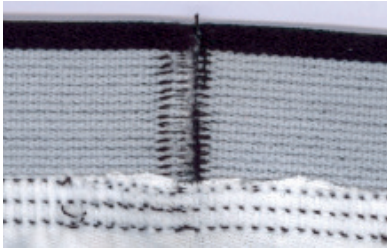
Ref. no.: PWT-102 (lindbergh)

MADE IN XXXXXX  
FABRIQUE EN XXXXXX

### Placement:

Please see separate instruction.

PLEASE PLACE SIDESEAM AT RIGHT SIDE



### Small

STYLE: XX-XXXXX  
ORDER: XXXXXXXXX

RN no.XXXX  
CA no.XXXX

WASH WITH SIMILAR COLOURS  
MAX SHRINKAGE 5%.

47,5% MODAL  
42,5% COTTON  
10% ELASTANE



### X Large

STYLE: XX-XXXXX  
ORDER: XXXXXXXXX

RN no.XXXX  
CA no.XXXX

WASH WITH SIMILAR COLOURS  
MAX SHRINKAGE 5%.

47,5% MODAL  
42,5% COTTON  
10% ELASTANE



### Medium

STYLE: XX-XXXXX  
ORDER: XXXXXXXXX

RN no.XXXX  
CA no.XXXX

WASH WITH SIMILAR COLOURS  
MAX SHRINKAGE 5%.

47,5% MODAL  
42,5% COTTON  
10% ELASTANE



### 2X Large

STYLE: XX-XXXXX  
ORDER: XXXXXXXXX

RN no.XXXX  
CA no.XXXX

WASH WITH SIMILAR COLOURS  
MAX SHRINKAGE 5%.

47,5% MODAL  
42,5% COTTON  
10% ELASTANE



### Large

STYLE: XX-XXXXX  
ORDER: XXXXXXXXX

RN no.XXXX  
CA no.XXXX

WASH WITH SIMILAR COLOURS  
MAX SHRINKAGE 5%.

47,5% MODAL  
42,5% COTTON  
10% ELASTANE



### 3X Large

STYLE: XX-XXXXX  
ORDER: XXXXXXXXX

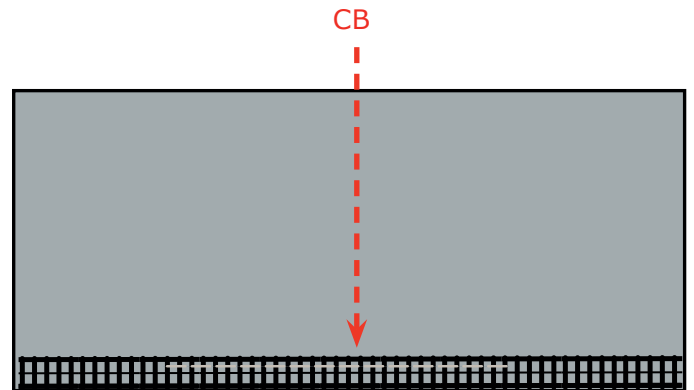
RN no.XXXX  
CA no.XXXX

WASH WITH SIMILAR COLOURS  
MAX SHRINKAGE 5%.

47,5% MODAL  
42,5% COTTON  
10% ELASTANE



## Elasticated waistband inside, with printed size label and carelabel



2,5 CM

### Medium

2 CM

STYLE: XX-XXXXX  
ORDER: XXXXXXXXX

RN no.XXXX  
CA no.XXXX

WASH WITH SIMILAR COLOURS  
MAX SHRINKAGE 5%.

5% LYCRA  
95% COTTON



**PLEASE FILL IN  
CORRECT QUALITY**

Size label font	Arial Bold
Size label fontsize	14
Carelabel font	Arial
Carelabel fontsize	9
Print colour on light fabrics	Lt grey 15-4101 TCX
Print colour on dark fabrics	White