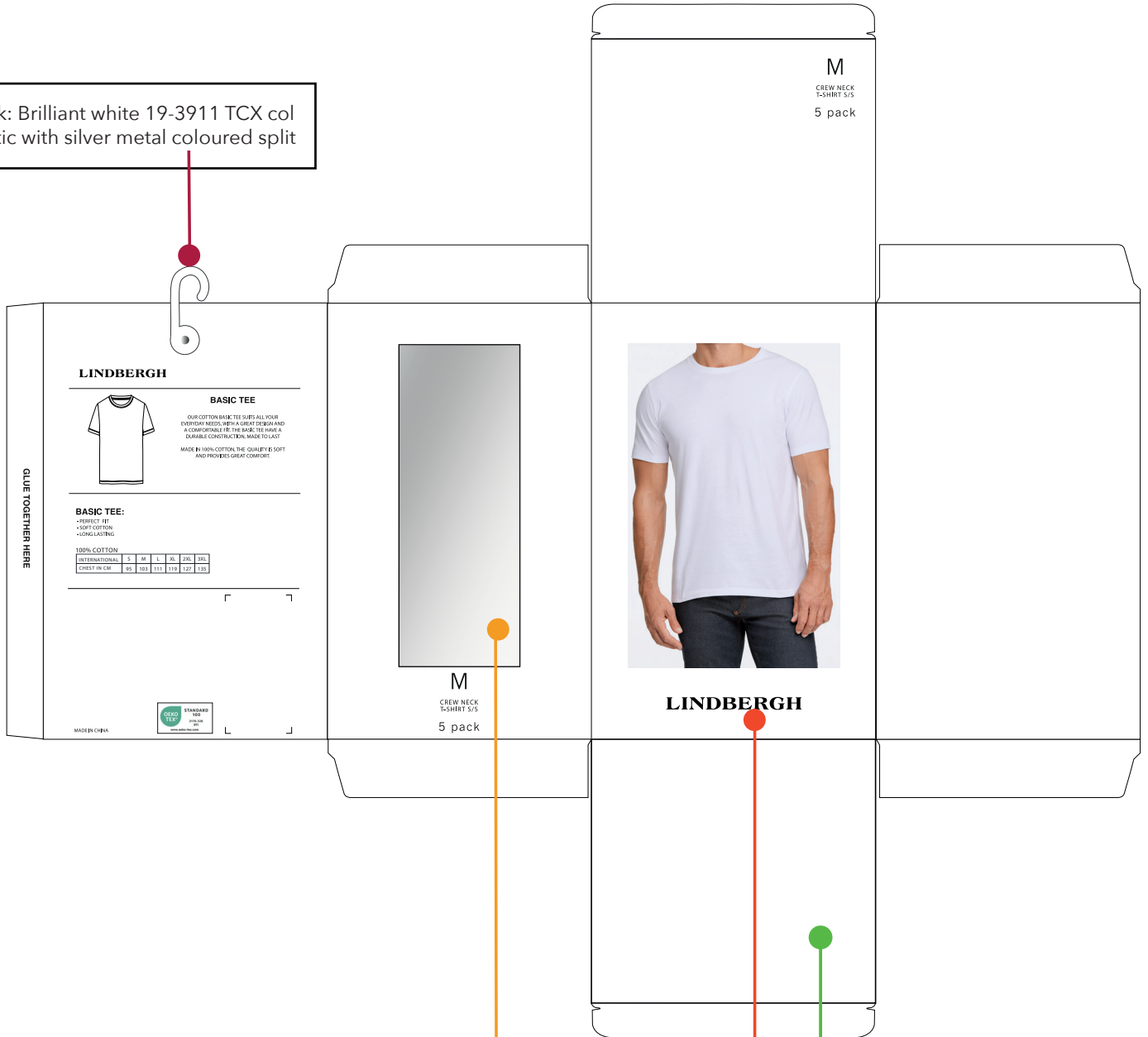


Label: LINDBERGH	Date: 13/05/24	Design: TMA/MKS	
Description: Label instruction for 5-pack T-shirts			Ref.no: LBA-9701

Box for t-shirt. LBA-717 UNFOLDED

Hook: Brilliant white 19-3911 TCX col plastic with silver metal coloured split



Main box col.: Brilliant white 14-4001 TCX

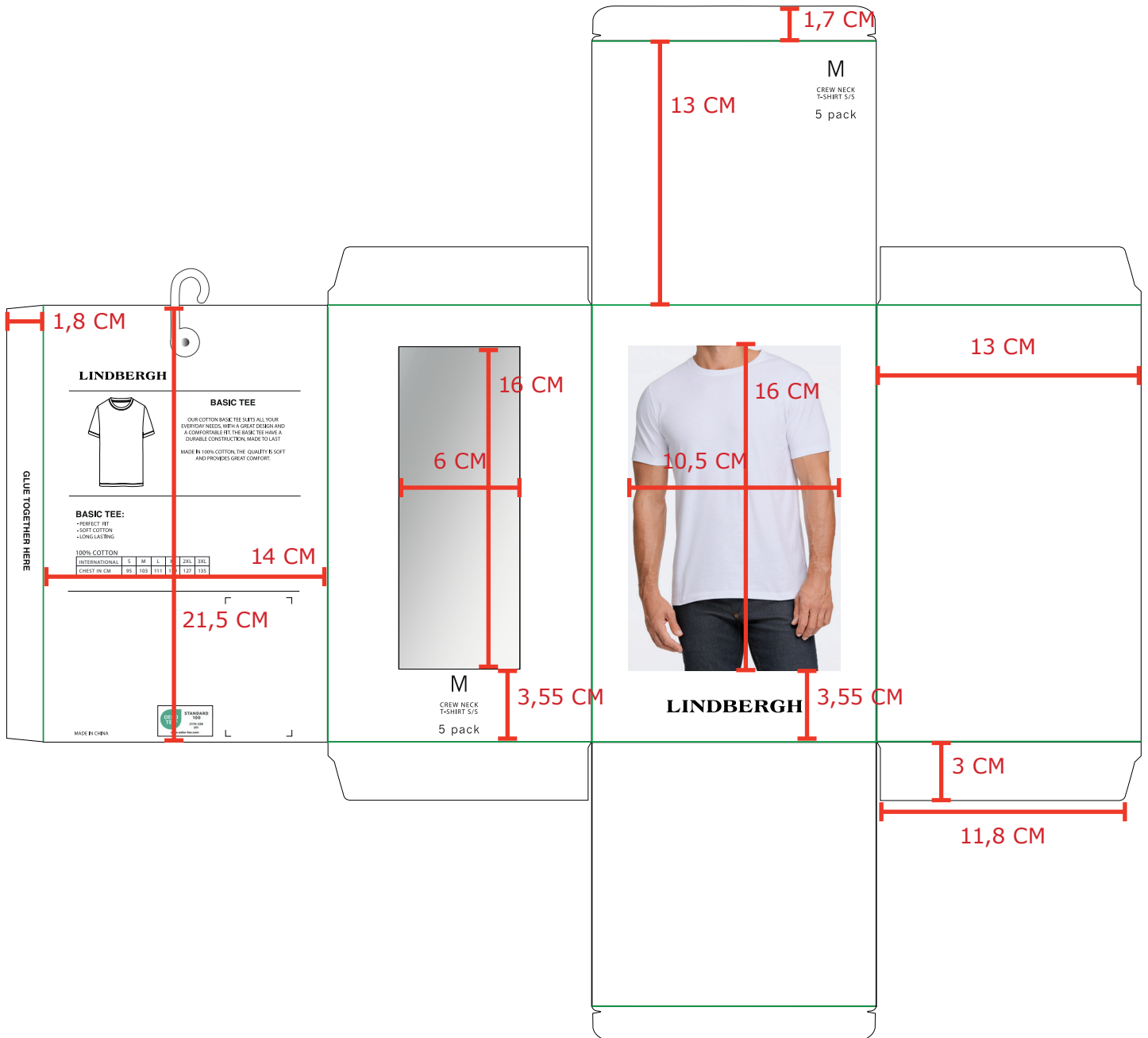
Text col.: Black beauty 19-3911 TCX

Window: see through plastic

Label: LINDBERGH	Date: 13/05/24	Design: TMA/MKS	
Description: Label instruction for 5-pack T-shirts			Ref.no: LBA-9701

Folding Instruction:

BELOW DRAWING IS NOT TO SCALE



— Folding lines

○ Box material

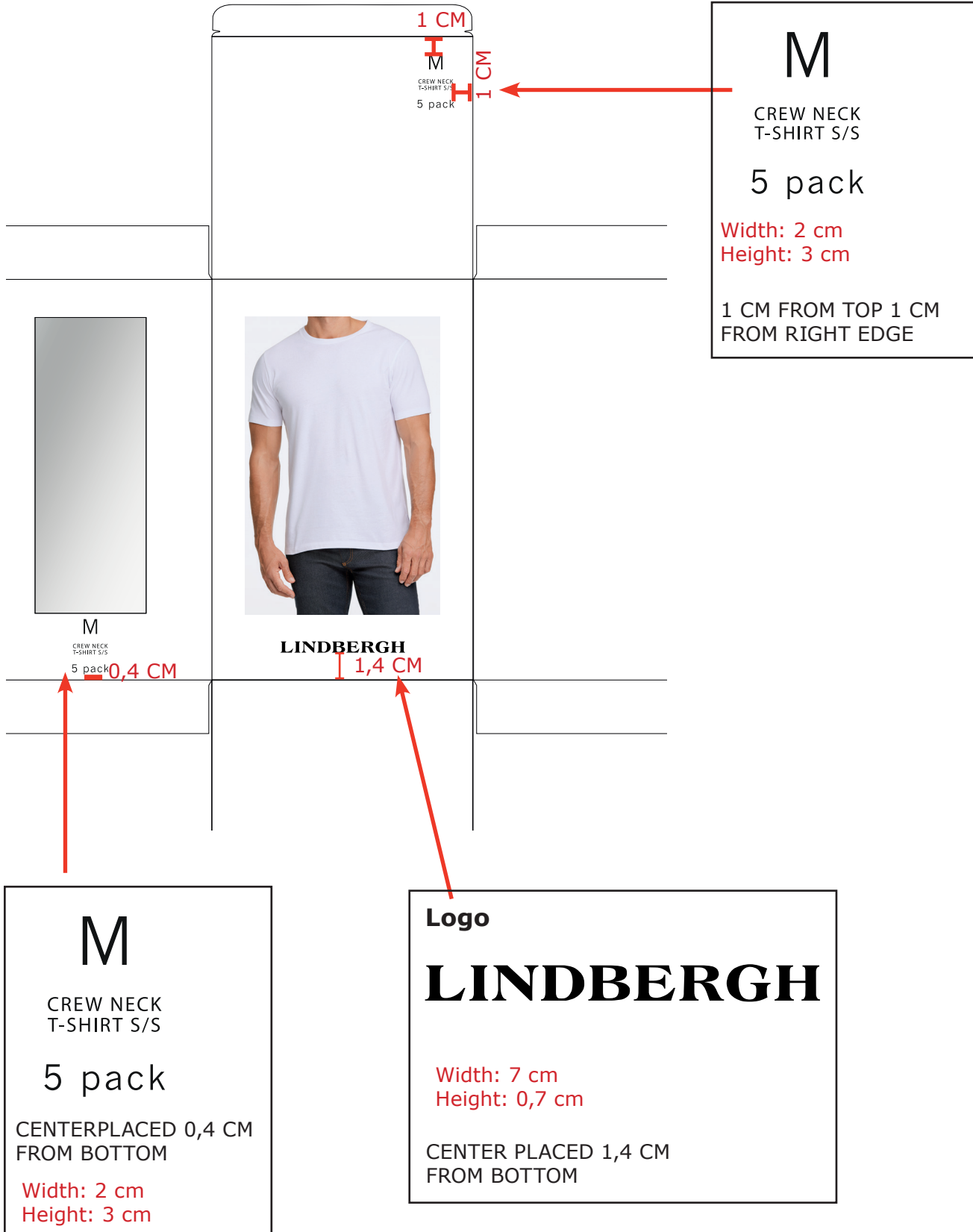
● Print

● See through plastic

Label: LINDBERGH	Date: 13/05/24	Design: TMA/MKS	
Description: Label instruction for 5-pack T-shirts			Ref.no: LBA-9701

Front + sides

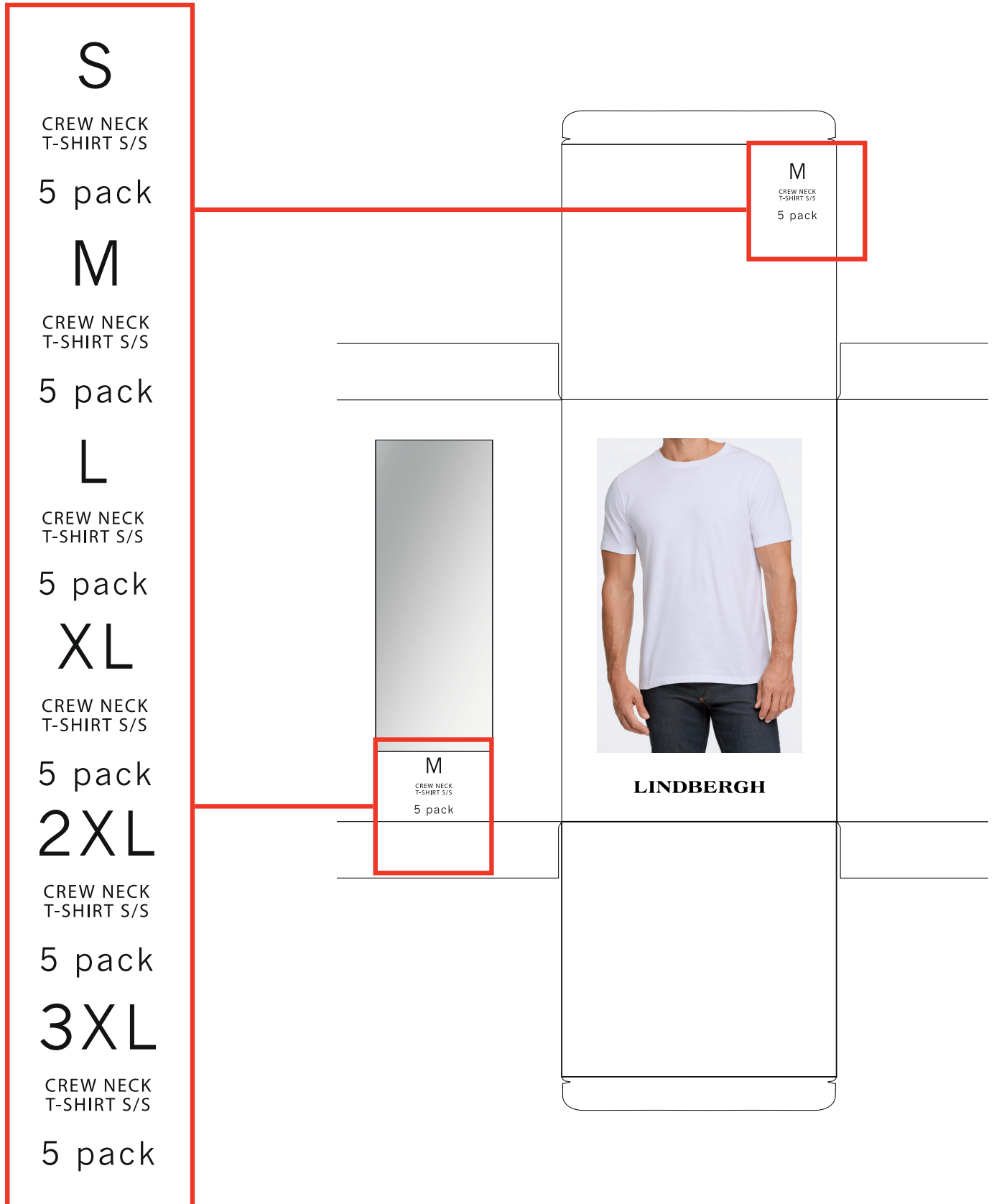
- Please use org. print file but change size on box accordingly



Label: LINDBERGH	Date: 13/05/24	Design: TMA/MKS	
Description: Label instruction for 5-pack T-shirts			Ref.no: LBA-9701

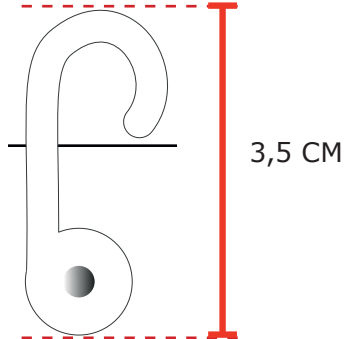
Box size print:

-Pls use org. printfile

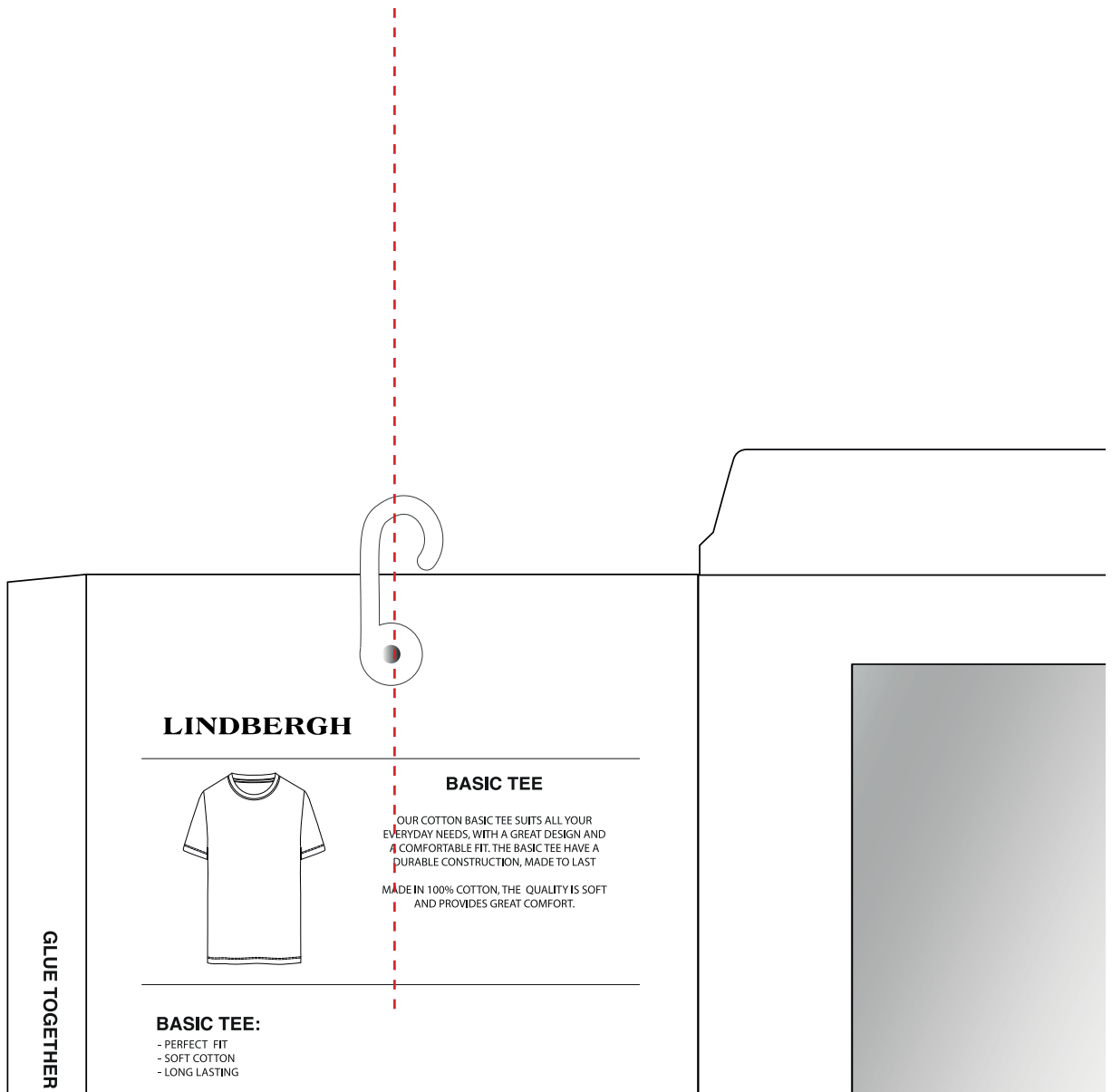


Label: LINDBERGH	Date: 13/05/24	Design: TMA/MKS	
Description: Label instruction for 5-pack T-shirts			Ref.no: LBA-9701

Plastic hook with metal split

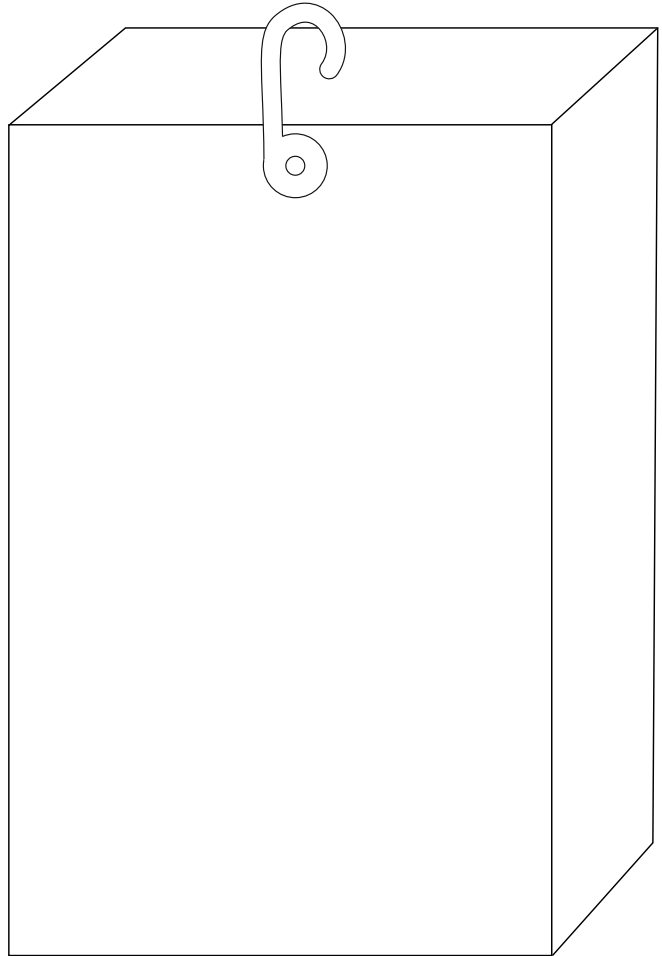


centered on box



Label: LINDBERGH	Date: 13/05/24	Design: TMA/MKS	
Description: Label instruction for 5-pack T-shirts			Ref.no: LBA-9701

Box when folded

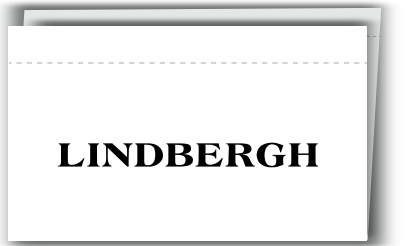


Label: LINDBERGH	Date: 13/05/24	Design: TMA/MKS	
Description: Label instruction for 5-pack T-shirts			Ref.no: LBA-9701

NECK LABEL LBH-W-850

LINDBERGH WHITE mid folded label LBH-W-850

Font logo : as sketch



0,5 cm

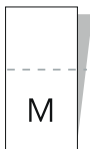
2,5 cm

5 cm

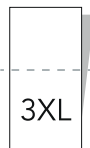
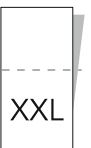
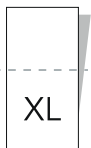
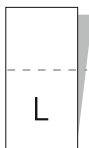
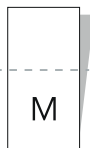
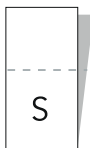
LINDBERGH Placement: centered

SIZE LABEL LBH-W-842

LINDBERGH WHITE LABEL_size label S.M.L LBH-W-842



Size: 10x40 mm
 Font : Avenir Book
 Size : 13 (S-XL) + 12 (XXL-3XL)
 Colour: White with black print (as main label)



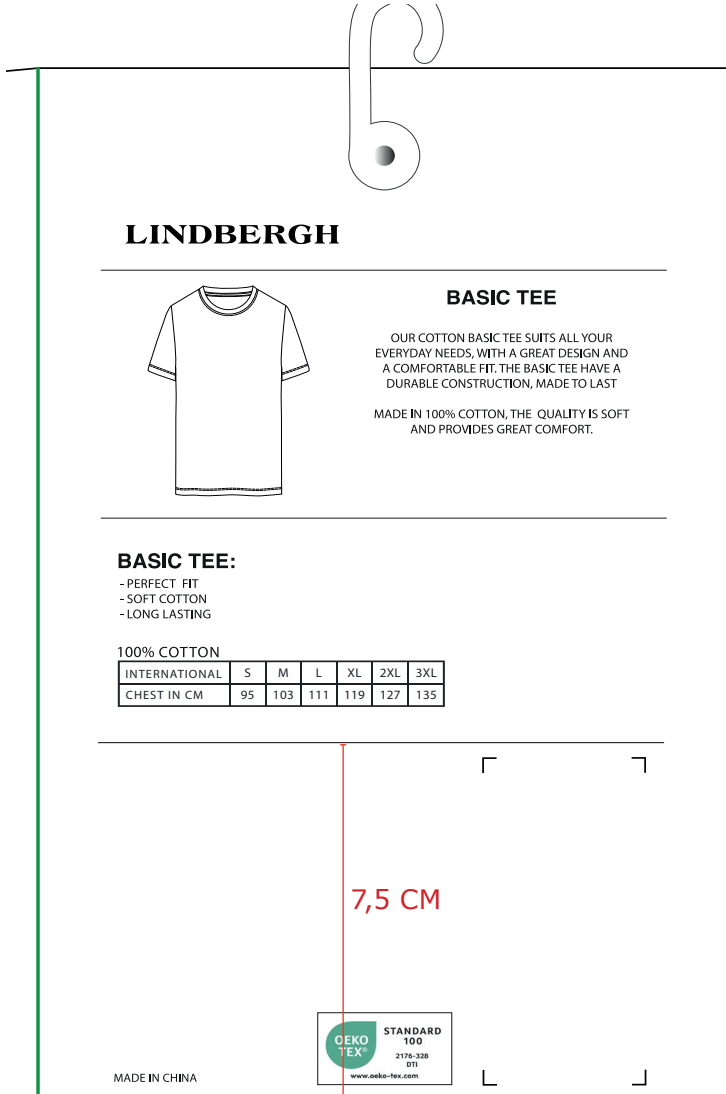
Carelabel instructions:

Please see [suppliermanual](#) for instructions

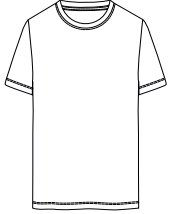
Label: LINDBERGH	Date: 13/05/24	Design: TMA/MKS	
Description: Label instruction for 5-pack T-shirts			Ref.no: LBA-9701

Back + closure

-Pls use org. printfile but change size on box accordingly



LINDBERGH



BASIC TEE

OUR COTTON BASIC TEE SUITS ALL YOUR EVERYDAY NEEDS, WITH A GREAT DESIGN AND A COMFORTABLE FIT. THE BASIC TEE HAVE A DURABLE CONSTRUCTION, MADE TO LAST

MADE IN 100% COTTON, THE QUALITY IS SOFT AND PROVIDES GREAT COMFORT.


BASIC TEE:

- PERFECT FIT
- SOFT COTTON
- LONG LASTING

100% COTTON

INTERNATIONAL	S	M	L	XL	2XL	3XL
CHEST IN CM	95	103	111	119	127	135

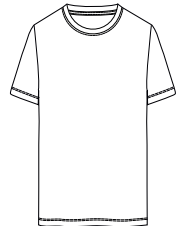
7,5 CM



MADE IN CHINA

BACK PRINT:
CENTER PLACED 7,5 CM FROM BOTTOM
Width: 11,4 cm
Height: 11 cm

LINDBERGH



BASIC TEE

OUR COTTON BASIC TEE SUITS ALL YOUR EVERYDAY NEEDS, WITH A GREAT DESIGN AND A COMFORTABLE FIT. THE BASIC TEE HAVE A DURABLE CONSTRUCTION, MADE TO LAST

MADE IN 100% COTTON, THE QUALITY IS SOFT AND PROVIDES GREAT COMFORT.

BASIC TEE:

- PERFECT FIT
- SOFT COTTON
- LONG LASTING

100% COTTON

INTERNATIONAL	S	M	L	XL	2XL	3XL
CHEST IN CM	95	103	111	119	127	135

CENTER PLACED 7,5 CM FROM BOTTOM

Label: LINDBERGH	Date: 13/05/24	Design: TMA/MKS	
Description: Label instruction for 5-pack T-shirts			Ref.no: LBA-9701

STICKER for salesmand sample




Follow instruction no. :
007 salesman sticker

BARCODE for Production

Barcode Placement
(for production Only)
Place price Sticker at fixing Points.

STYLE NO.: XX-00000



COL: Charcoal

SIZE: M

DKK	3000.00
SEK	3000.00
NOK	3000.00
EUR	350.00
GBP	350.00

Recommended retail price,
Price may differ due to local VAT
and economic conditions

Oekotex print logo:



Oeko-tex logo color ref:

Label Design Guideline Colour Values	OEKO-TEX® Green	Black	White
PRINT			
Pantone U	Green U	Black U	-
Pantone C	Green C	Black C	-
CMYK	c84 m0 y57 k0	c0 m0 y100 k98	c0 m0 y0 k100
RAL DESIGN	170 60 45	000 30 00	000 90 00
DIGITAL			
RGB	r0 g166 b135	r5 g5 b5	r255 g255 b255
HEX	#00A0C0	#000000	#FFFFFF

Label Design Guideline Safe Zone + Placement

Please note:
Minimum safe zone 'X' is the size of the 'X' in the OEKO-TEX® Logo.

Label: LINDBERGH	Date: 13/05/24	Design: TMA/MKS	
Description: Label instruction for 5-pack T-shirts			Ref.no: LBA-9701

PACKING INSTRUCTION



FINISH FOLDED TEE MUST FIT LENGTH OF BOX, AND NECK LABEL MUST BE VISIBLE AND CENTERED LIKE ON PHOTO.

Label: LINDBERGH	Date: 13/05/24	Design: TMA/MKS	
Description: Label instruction for 5-pack T-shirts			Ref.no: LBA-9701

PLACE 4 OF THE T-SHIRTS STANDING IN THE BOX, SO FIRST T-SHIRT WILL BE VISIBLE IN THE SIDE WINDOW, AS BELOW PHOTO. PLEASE MAKE SURE THE T-SHIRTS LOOK SMOOTH AND DO NOT WRINKLE TOO MUCH.

PLACE 1 T-SHIRTS STANDING IN THE BACK OF THE BOX, AS BELOW PHOTO. WHEN FOLDED WIDTH MUST BE AS WIDE AS THE BOX.

