

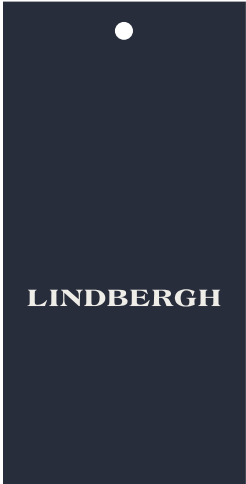
<b>Label:</b>  <b>LINDBERGH</b>	<b>Description :</b> LINDBERGH BLUE - SHIRTS	<b>Date:</b> 23/01/23 <b>Modification date:</b> 6 February 2026 9:52 am
	<b>Label instruction no:</b> LBB-2001	<b>Design :</b> WAI

## Main hang tag

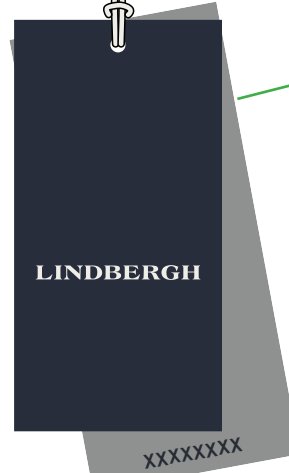
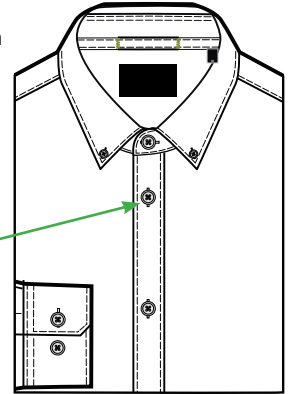
Hang tag  
LBB-999

+ Story telling hang tag  
(if any)  
- see tech pack for info

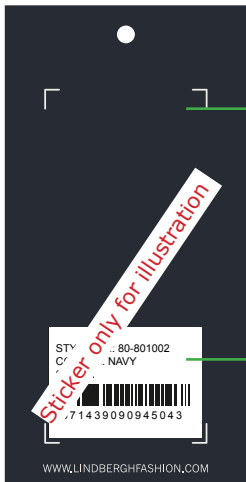
Front



Fix Hang Tag with knot at 1st button hole. See sketch here



STICKER for Salesman Sample



Add at back side of last hang tag

Pls add sticker at back side of story telling hang tag, if there is one

Follow instruction no. : 007 salesman sticker

BARCODE for Production



Add at back side of last hang tag

Barcode placement (for production only)  
Place price sticker at fixing points.

STYLE NO.: XX-00000

COL: Charcoal

**SIZE: M**

DKK	3000.00
SEK	3000.00
NOK	3000.00
EUR	350.00
GBP	350.00

Recommended retail price. Price may differ due to local VAT and economic conditions

## Spare Buttons

To be sewn at care label

<b>Label:</b>  <b>LINDBERGH</b>	<b>Description :</b> LINDBERGH BLUE - SHIRTS	<b>Date:</b> 23/01/23 <b>Modification date:</b> 6 February 2026 9:52 am
	<b>Label instruction no:</b> LBB-2001	<b>Design :</b> WAI

## Labels Instructions

### Main label + size label + extra label

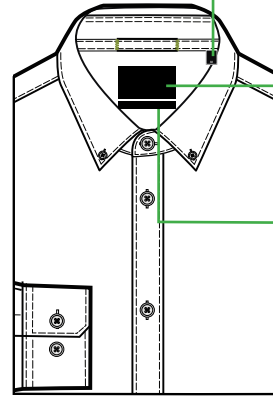
**Main label**  
LBB-805



**Size label**  
LBB-820



**Placement:**



**Size label:**

Place 6cm from CB,  
at collar stand bottom  
edge

**Main label:**

Placed 2cm below  
collar stand at CB.  
Stitch all around label.

**Story telling label:**

place 1 cm below  
main label.  
Stitch all around label.

**Story telling labels**

See tech pack for label ref  
number

### Tissue paper w print:

see artwork and details in supplier manual  
33cm x 48cm



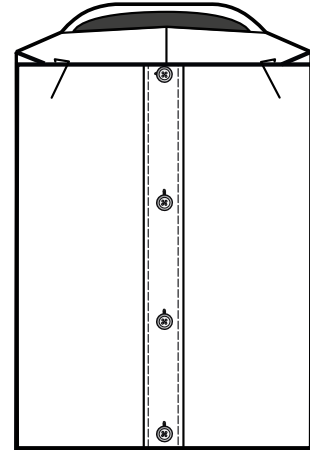
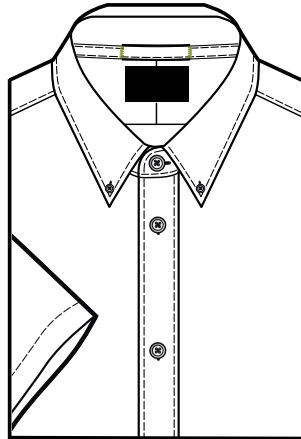
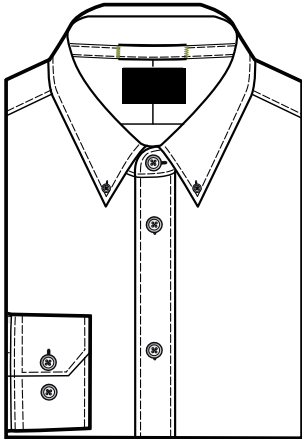
<b>Label:</b>  <b>LINDBERGH</b>	<b>Description :</b> LINDBERGH BLUE - SHIRTS	<b>Date:</b> 23/01/23 <b>Modification date:</b> 6 February 2026 9:52 am
	<b>Label instruction no:</b> LBB-2001	<b>Design :</b> WAI

## Packing Instructions: Shirt (General)

Folding/packing instructions:

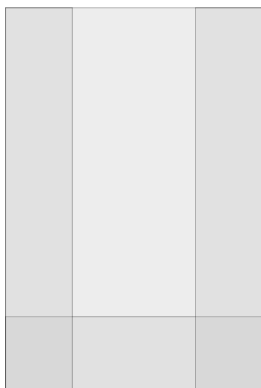
Long Sleeves

Short Sleeves

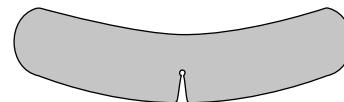


FOLDED & PACKED  
24cm(W) / 35cm(H)  
EACH GARMENT PACKED IN  
POLYBAG WITH STICKER.

PLEASE USE PLASTIC  
CLIPS TO FIX THE SHIRT



2 LAYERS OF TISSUE.  
(NO CARD BOARD)  
33 X 48cm  
TOP LAYER TISSUE PAPER  
IS WITH WHITE LOGO



SINGLE BUTTERFLY TO FIX COLLAR.  
EACH GARMENT PACKED W/ BUTTERFLY  
UNDERNEATH COLLAR



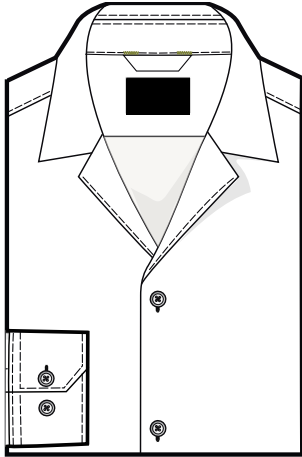
PLASTIC COLLAR STAND

<b>Label:</b>  <b>LINDBERGH</b>	<b>Description :</b> LINDBERGH BLUE - SHIRTS	<b>Date:</b> 23/01/23 <b>Modification date:</b> 6 February 2026 9:52 am
	<b>Label instruction no:</b> LBB-2001	<b>Design :</b> WAI

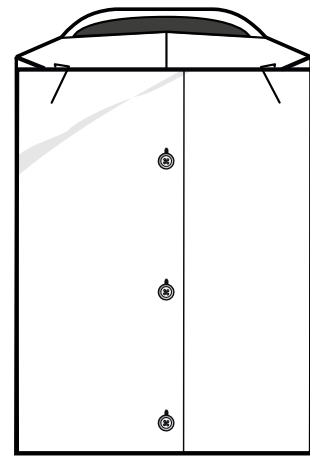
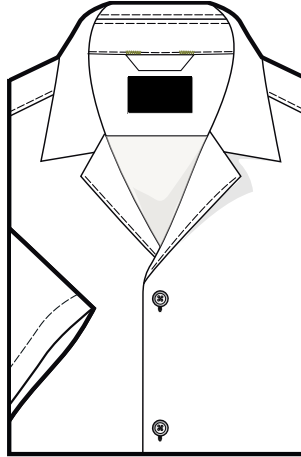
## Packing Instructions: Resrot shirt

Folding/packing instructions:

Long Sleeves

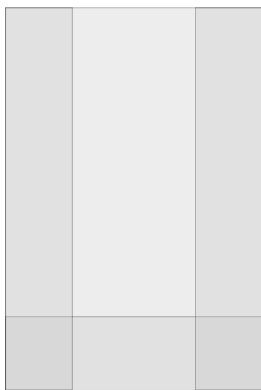


Short Sleeves



FOLDED & PACKED  
24cm(W) / 35cm(H)  
EACH GARMENT PACKED IN  
POLYBAG WITH STICKER.

PLEASE USE PLASTIC  
CLIPS TO FIX THE SHIRT



2 LAYERS OF TISSUE.  
(NO CARD BOARD)  
33 X 48cm  
TOP LAYER TISSUE PAPER  
IS WITH WHITE LOGO

- NO BUTTERFLY NEEDED TO FIX COLLAR  
- NO PLASTIC NEEDED TO FIX COLLAR STAND

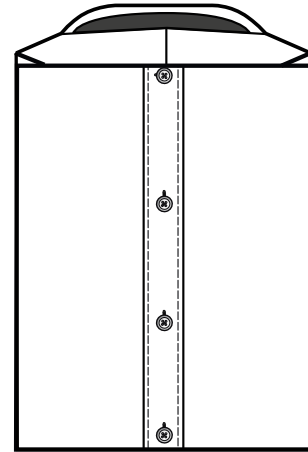
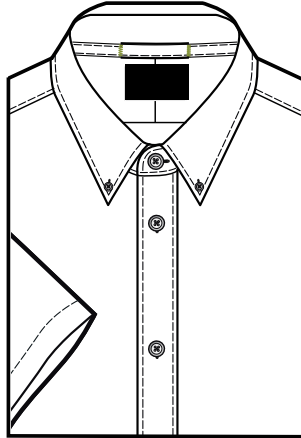
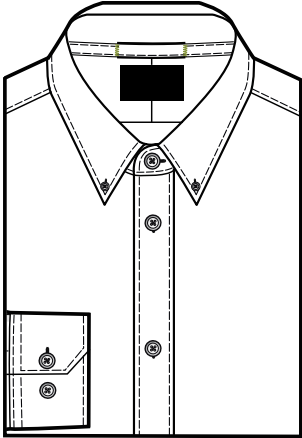
<b>Label:</b>  <b>LINDBERGH</b>	<b>Description :</b> LINDBERGH BLUE - SHIRTS	<b>Date:</b> 23/01/23 <b>Modification date:</b> 6 February 2026 9:52 am
	<b>Label instruction no:</b> LBB-2001	<b>Design :</b> WAI

**Packing Instructions:**  
**Heavy shirt**

Folding/packing instructions:

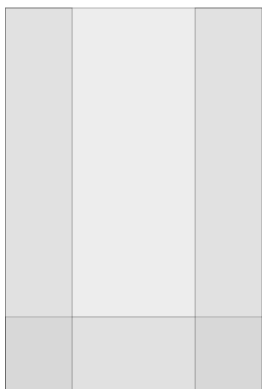
Long Sleeves

Short Sleeves

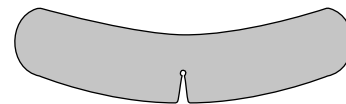


FOLDED & PACKED  
24cm(W) / 35cm(H)  
EACH GARMENT PACKED IN  
POLYBAG WITH STICKER.

NO PINS NOR CLIPS TO FIX  
SHIRT



2 LAYERS OF TISSUE.  
(NO CARD BOARD)  
33 X 48cm  
TOP LAYER TISSUE PAPER  
IS WITH WHITE LOGO



SINGLE BUTTERFLY TO FIX COLLAR.  
EACH GARMENT PACKED W/ BUTTERFLY  
UNDERNEATH COLLAR



PLASTIC COLLAR STAND