

Label: LINDBERGH	Date: 12/03/2017 Modification date: 8 October 2025 1:28 pm	
Description: Label instruction for 2-pack bamboo tees	Labels instruc. No.: LBB-9020	Design: TMA/AKR

Box for t-shirt s/s. LBB-716 UNFOLDED

Hook: BLACK BEAUTY 19-3911 TCX col plastic with silver metal coloured split



Main box col.:SALUTE 19-4011 TCX

Text col.: Brilliant white 11-4001 TCX

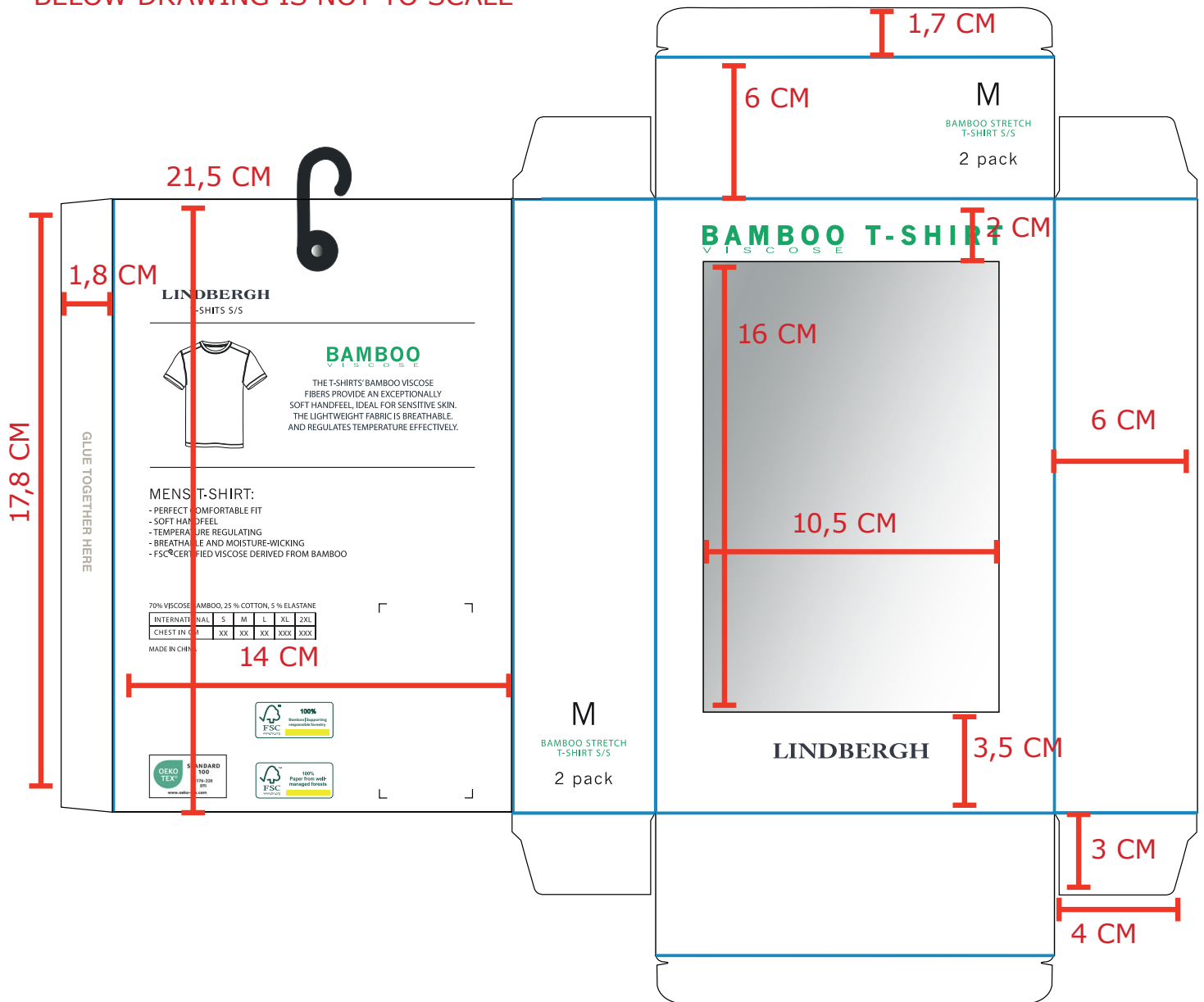
Text col.:BRIGHT GREEN 15-5534 TCX

Window:see through plastic

Label: LINDBERGH	Date: 12/03/2017 Modification date: 8 October 2025 1:28 pm	
Description: Label instruction for 2-pack bamboo tees	Labels instruc. No.: LBB-9020	Design: TMA/AKR

Folding Instruction:

BELOW DRAWING IS NOT TO SCALE



— Folding lines

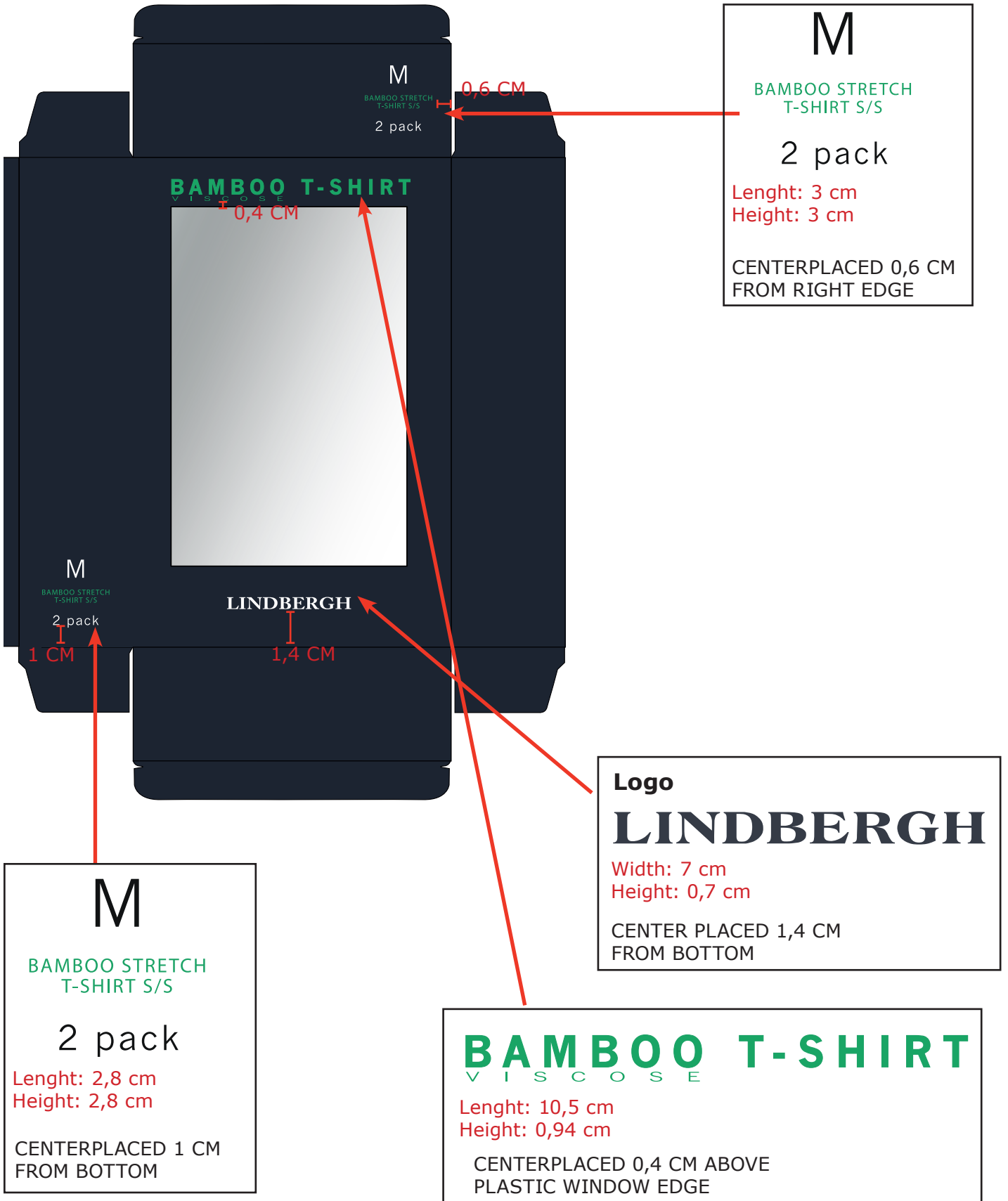
○ Box material

● See through plastic

Label: LINDBERGH	Date: 12/03/2017 Modification date: 8 October 2025 1:28 pm	
Description: Label instruction for 2-pack bamboo tees	Labels instruc. No.: LBB-9020	Design: TMA/AKR

Print placement:

- Please use org. print file but change size on box accordingly



Label: LINDBERGH	Date: 12/03/2017 Modification date: 8 October 2025 1:28 pm	
Description: Label instruction for 2-pack bamboo tees	Labels instruc. No.: LBB-9020	Design: TMA/AKR

Print for LBB-716

Back + closure

-Pls use org. printfile but change size on box accordingly

BACK PRINT:

Width: 11,4 cm

Height: 18 cm

CENTERPLACED



PLEASE INSERT CORRECT MEASUREMENT FROM MEASUREMENT CHART FOR "WAISTBAND IN CM"

70% VISCOSE BAMBOO, 25 % COTTON, 5 % ELASTANE

INTERNATIONAL	S	M	L	XL	2XL
CHEST IN CM	XX	XX	XX	XXX	XXX

Label: <h1>LINDBERGH</h1>	Date: 12/03/2017 Modification date: 8 October 2025 1:28 pm	
Description: Label instruction for 2-pack bamboo tees	Labels instruc. No.: LBB-9020	Design: TMA/AKR

STICKER for salesmand sample



Follow instruction no. :
007 salesman sticker

BARCODE for
Production

Barcode
Placement
(for production
Only)
Place price
Sticker at fixing
Points.

: XX-00000



harcoal

:: M

3000.00

3000.00

3000.00

350.00

350.00

retail price,
due to local VAT
conditions

STYLE NO.: XX



COL: Charc

ONE SI

DKK 30

SEK 30

NOK 30

EUR 3

GBP 3

Recommended retail
Price may differ due to
and economic con

SAMPLE

Oekotex print logo:



Oeko-tex logo color ref:

Label Design Guideline
Colour Values

	OEKO-TEX® Green	Black	White
PRINT			
Pantone U	Green U	Black U	-
Pantone C	Green C	Black C	-
CMYK	c84 m0 y57 k0	c0 m0 y95 k8	c0 m0 y95 k0
RAL DESIGN	170 60 45	000 30 00	000 90 00
DIGITAL			
RGB	r0 g164 b135	r5 g5 b5	r255 g255 b255
HEX	#00A38C	#050505	#FFFFFF

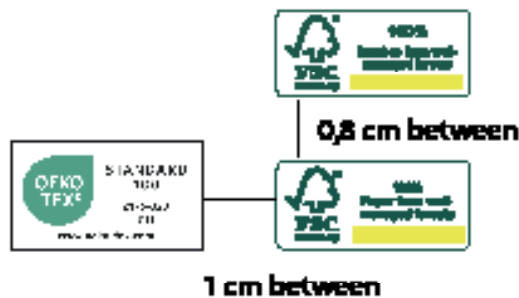
Label Design Guideline
Safe Zone + Placement



FSC print logo:



Placement:



FSC logo color ref:

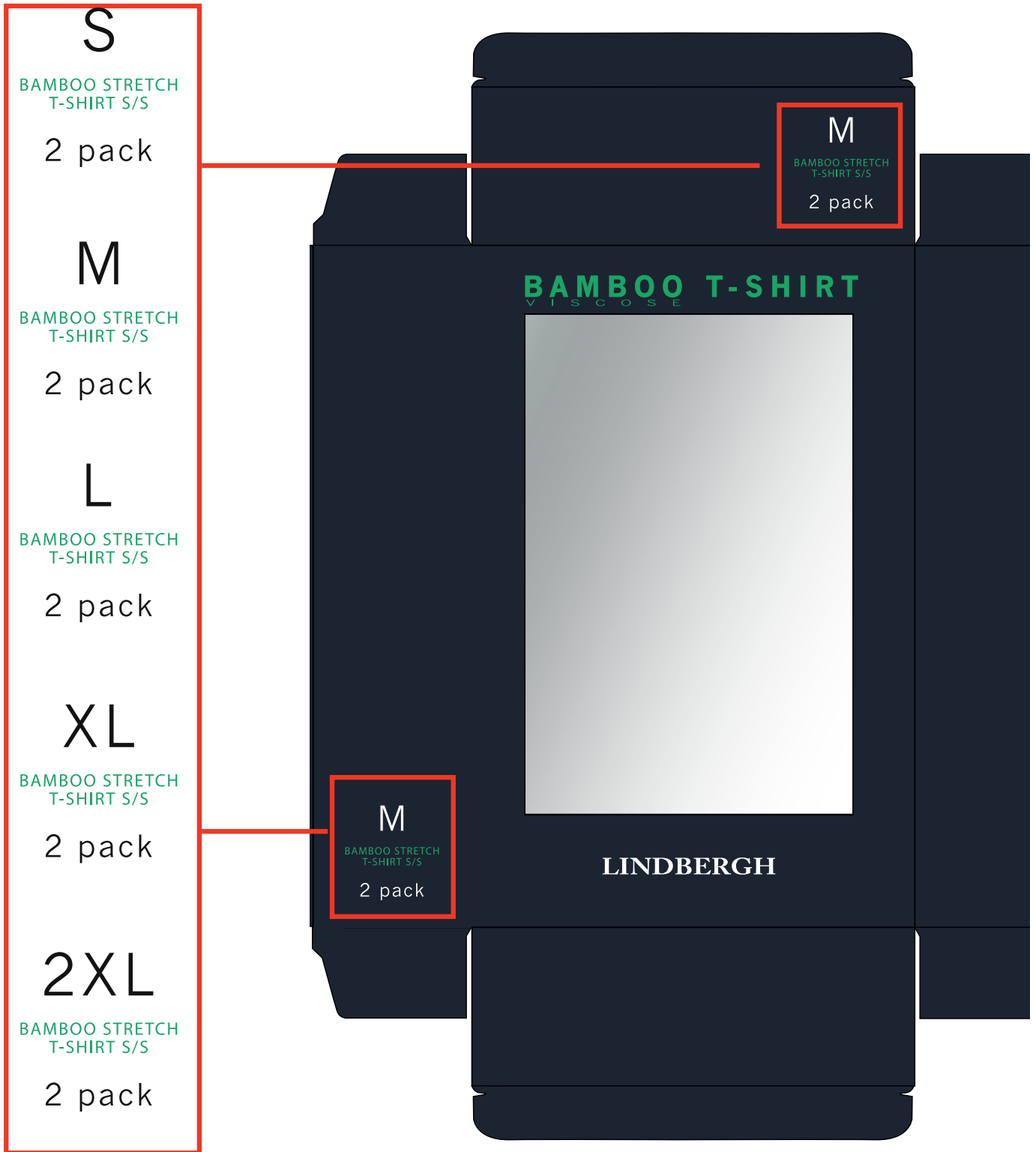
PANTONE
GREEN 628C
WHITE

**IMPORTANT TO USE CORRECT SUPPLIER FSC NUMBER
ACCORDING TO PRODUCT AND BOX**

Label: LINDBERGH	Date: 12/03/2017 Modification date: 8 October 2025 1:28 pm	
Description: Label instruction for 2-pack bamboo tees	Labels instruc. No.: LBB-9020	Design: TMA/AKR

Box size print:

-Pls use org. printfile

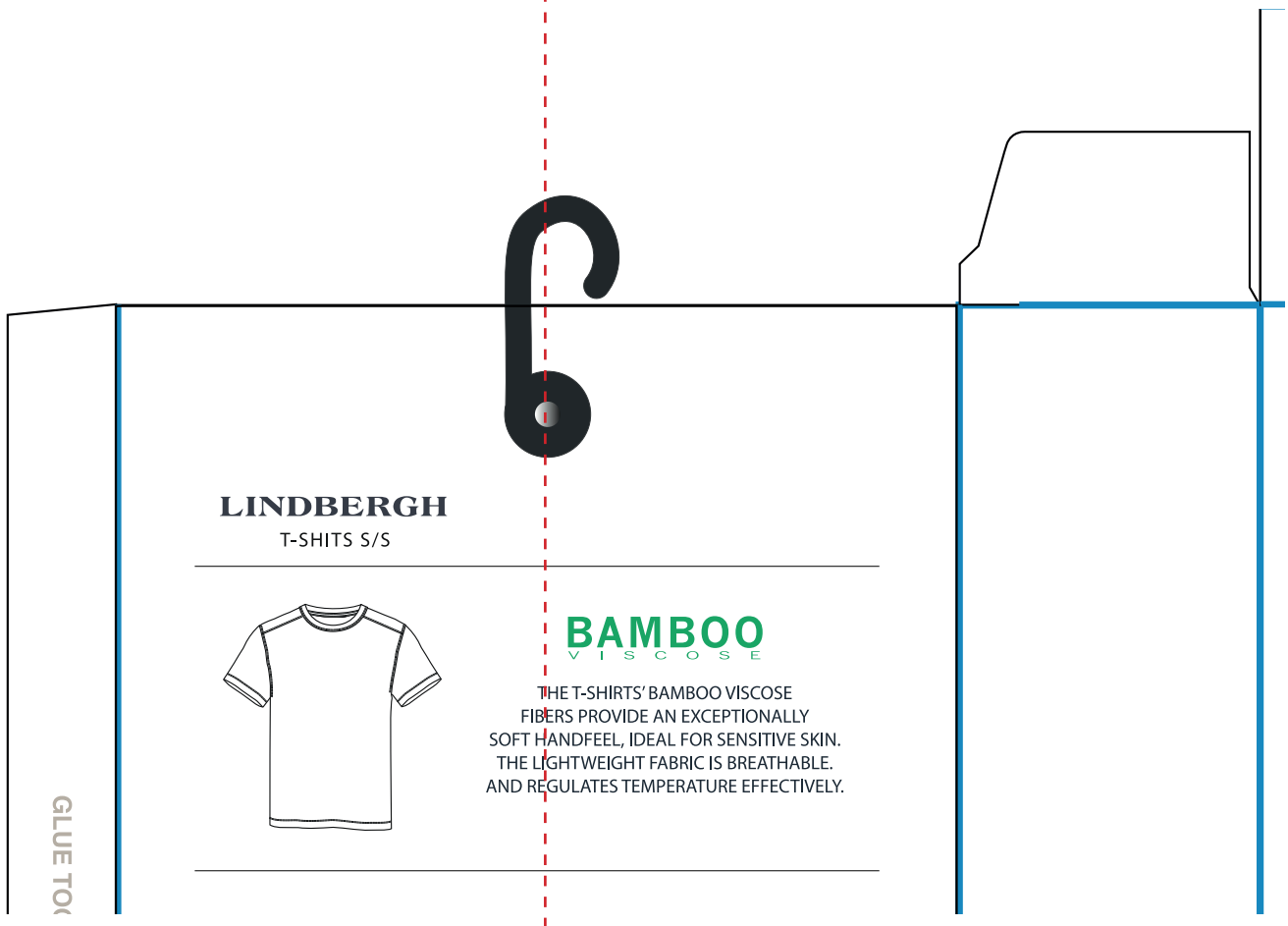


Label: LINDBERGH	Date: 12/03/2017 Modification date: 8 October 2025 1:28 pm	
Description: Label instruction for 2-pack bamboo tees	Labels instruc. No.: LBB-9020	Design: TMA/AKR

Plastic hook with metal split



centered on box

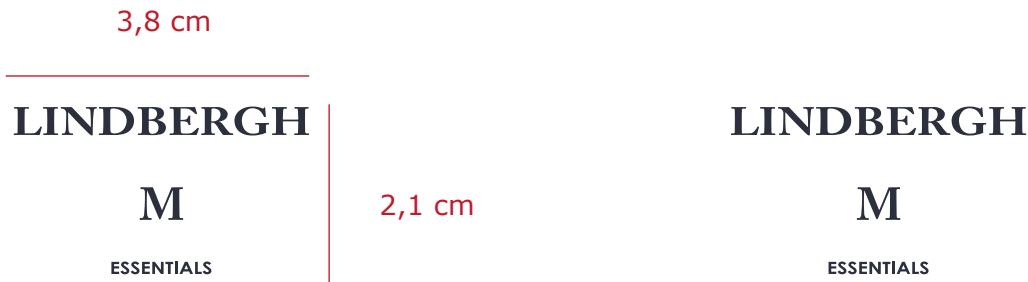


Label: LINDBERGH	Date: 12/03/2017 Modification date: 8 October 2025 1:28 pm	
Description: Label instruction for 2-pack bamboo tees	Labels instruc. No.: LBB-9020	Design: TMA/AKR

NECK LABEL PRINT LBH-W-506E

Print type: Pigment print
Colours: See program

1:1 size AW:



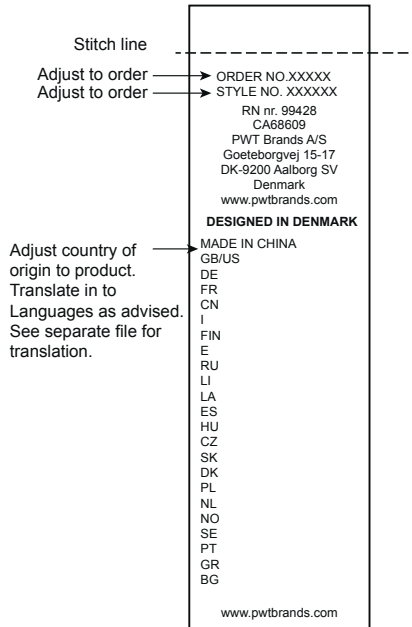
Placement:
 Center back 1 cm from neck tape



Label: <h1>LINDBERGH</h1>	Date: 12/03/2017 Modification date: 8 October 2025 1:28 pm	
Description: Label instruction for 2-pack bamboo tees	Labels instruc. No.: LBB-9020	Design: TMA/AKR

Carelabel instructions:

Please see suppliermanual for instructions



Label: LINDBERGH	Date: 12/03/2017 Modification date: 8 October 2025 1:28 pm	
Description: Label instruction for 2-pack bamboo tees	Labels instruc. No.: LBB-9020	Design: TMA/AKR

Box when folded

