

<b>Label:</b> <b>LINDBERGH</b>	<b>Date:</b> 09/04/2019 <b>Modification date:</b> 8 October 2025 11:47 am	
<b>Description:</b> Label instruction for 2-pack tank top	<b>Labels instruc. No.:</b> LBB-9021	<b>Design:</b> TK/TMA/AKR

## Box for tank top. LBB-717 UNFOLDED

Hook: BLACK BEAUTY 19-3911 TCX col plastic with silver metal coloured split



Main box col.:SALUTE 19-4011 TCX

Text col.: Brilliant white 11-4001 TCX

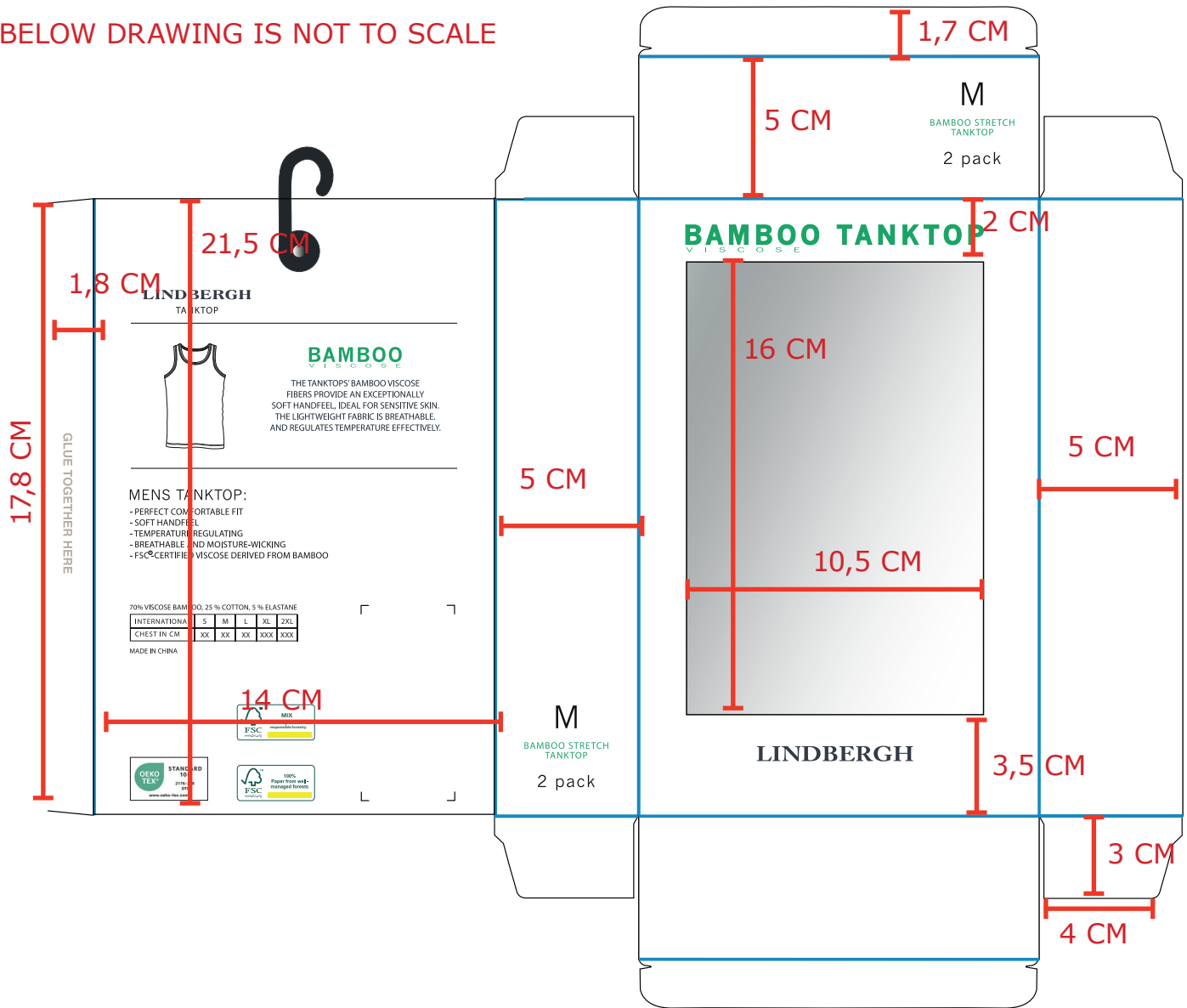
Text col.:BRIGHT GREEN 15-5534 TCX

Window:see through plastic

<b>Label:</b> <b>LINDBERGH</b>	<b>Date:</b> 09/04/2019 <b>Modification date:</b> 8 October 2025 11:47 am	
<b>Description:</b> Label instruction for 2-pack tank top	<b>Labels instruc. No.:</b> LBB-9021	<b>Design:</b> TK/TMA/AKR

## Folding Instruction:

BELOW DRAWING IS NOT TO SCALE



— Folding lines

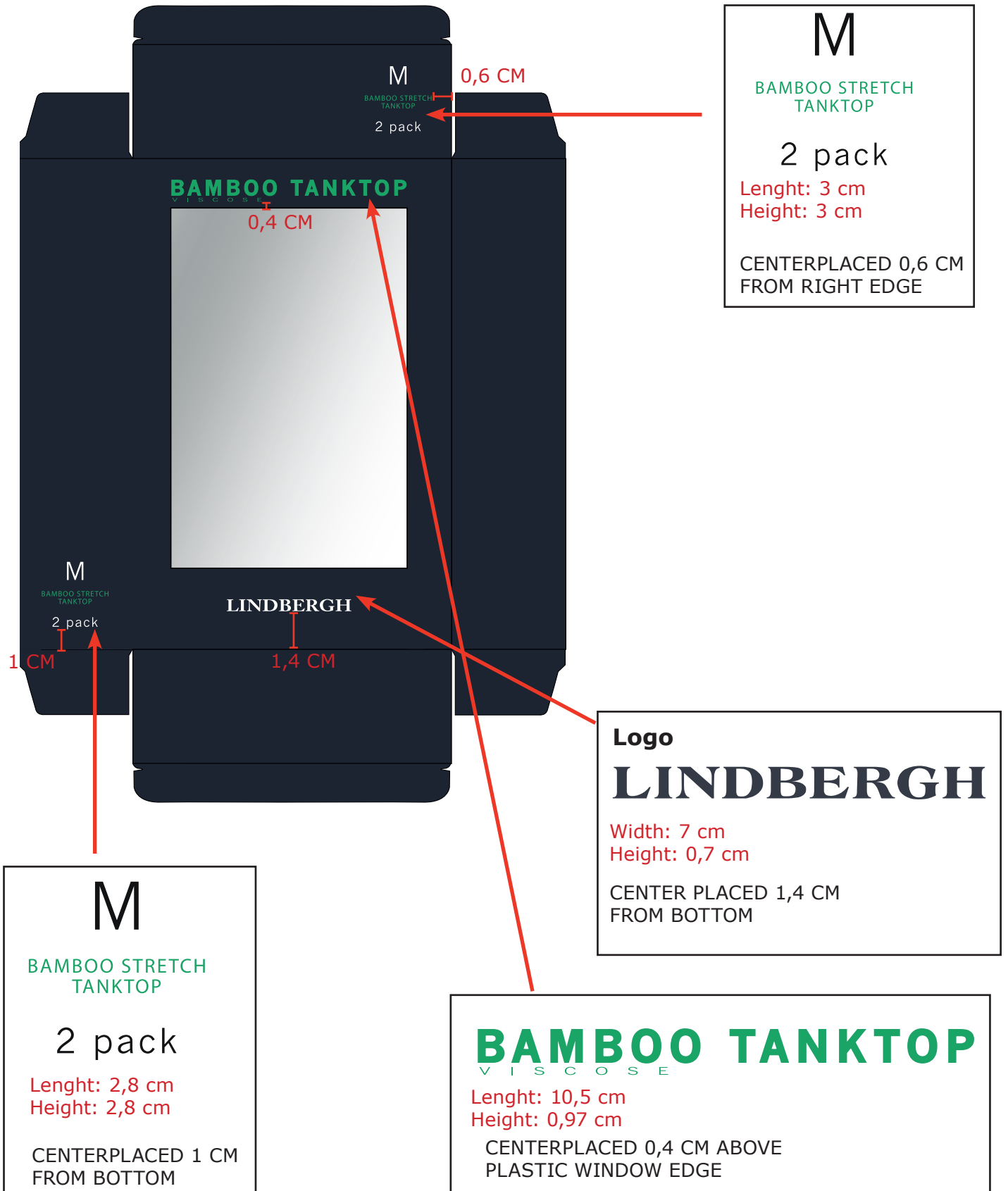
○ Box material

● See through plastic

<b>Label:</b> <b>LINDBERGH</b>	<b>Date:</b> 09/04/2019 <b>Modification date:</b> 8 October 2025 11:47 am	
<b>Description:</b> Label instruction for 2-pack tank top	<b>Labels instruc. No.:</b> LBB-9021	<b>Design:</b> TK/TMA/AKR

**Print placement:**

- Please use org. print file but change size on box accordingly



**M**  
BAMBOO STRETCH  
TANKTOP  
  
2 pack  
Lenght: 3 cm  
Height: 3 cm  
  
CENTERPLACED 0,6 CM  
FROM RIGHT EDGE

**Logo**  
**LINDBERGH**  
  
Width: 7 cm  
Height: 0,7 cm  
  
CENTER PLACED 1,4 CM  
FROM BOTTOM

**M**  
BAMBOO STRETCH  
TANKTOP  
  
2 pack  
Lenght: 2,8 cm  
Height: 2,8 cm  
  
CENTERPLACED 1 CM  
FROM BOTTOM

**BAMBOO TANKTOP**  
V I S C O S E  
Lenght: 10,5 cm  
Height: 0,97 cm  
  
CENTERPLACED 0,4 CM ABOVE  
PLASTIC WINDOW EDGE

<b>Label:</b> <b>LINDBERGH</b>	<b>Date: 09/04/2019</b> <b>Modification date:</b> <b>8 October 2025 11:47 am</b>	
<b>Description:</b> Label instruction for 2-pack tank top	<b>Labels instruc. No.:</b> LBB-9021	<b>Design:</b> TK/TMA/AKR

## Print for LBB-716

### Back + closure

-Pls use org. printfile but change size on box accordingly

BACK PRINT:

Width: 11,4 cm

Height: 11 cm

CENTERPLACED



PLEASE INSERT CORRECT MEASUREMENT FROM MEASUREMENT CHART FOR "WAISTBAND IN CM"

70% VISCOSÉ BAMBOO, 25 % COTTON, 5 % ELASTANE

INTERNATIONAL	S	M	L	XL	2XL
CHEST IN CM	XX	XX	XX	XXX	XXX

<b>Label:</b> <b>LINDBERGH</b>	<b>Date: 09/04/2019</b> <b>Modification date:</b> <b>8 October 2025 11:47 am</b>	
<b>Description:</b> Label instruction for 2-pack tank top	<b>Labels instruc. No.:</b> LBB-9021	<b>Design:</b> TK/TMA/AKR

STICKER for salesmand sample



Follow instruction no. :  
007 salesman sticker

BARCODE for  
Production

Barcode  
Placement  
(for production  
Only)  
Place price  
Sticker at fixing  
Points.

STYLE NO.: XX-00000



COL: Charcoal

**SIZE: M**

DKK	3000.00
SEK	3000.00
USD	3000.00
EUR	350.00
GBP	350.00

Recommended retail price.  
Price may differ due to local VAT  
and economic conditions

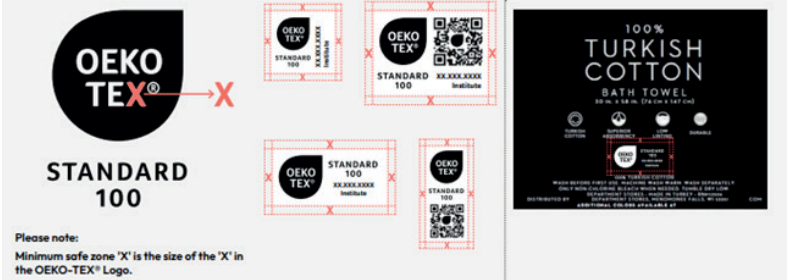
Oekotex print logo:



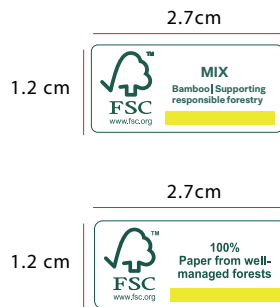
Oeko-tex logo color ref:

Label Design Guideline Colour Values			
	OEKO-TEX® Green	Black	White
<b>PRINT</b>			
Pantone U	Green U	Black U	-
Pantone C	Green C	Black C	-
CMYK	c84 m0 y57 k0	c0 m0 y100 k0	c0 m0 y0 k0
RAL DESIGN	170 60 45	000 30 00	000 90 00
<b>DIGITAL</b>			
RGB	r0 g166 b135	r5 g0 b5	r255 g255 b255
HEX	#00AC8C	#050505	#FFFFFF

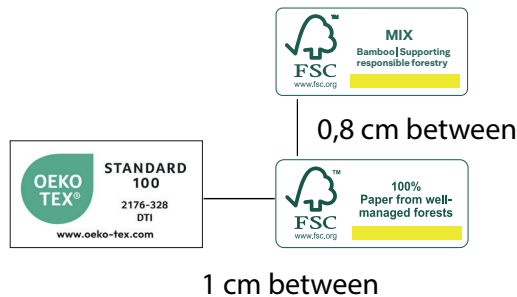
Label Design Guideline  
Safe Zone + Placement



FSC print logo:



Placement :



FSC logo color ref:

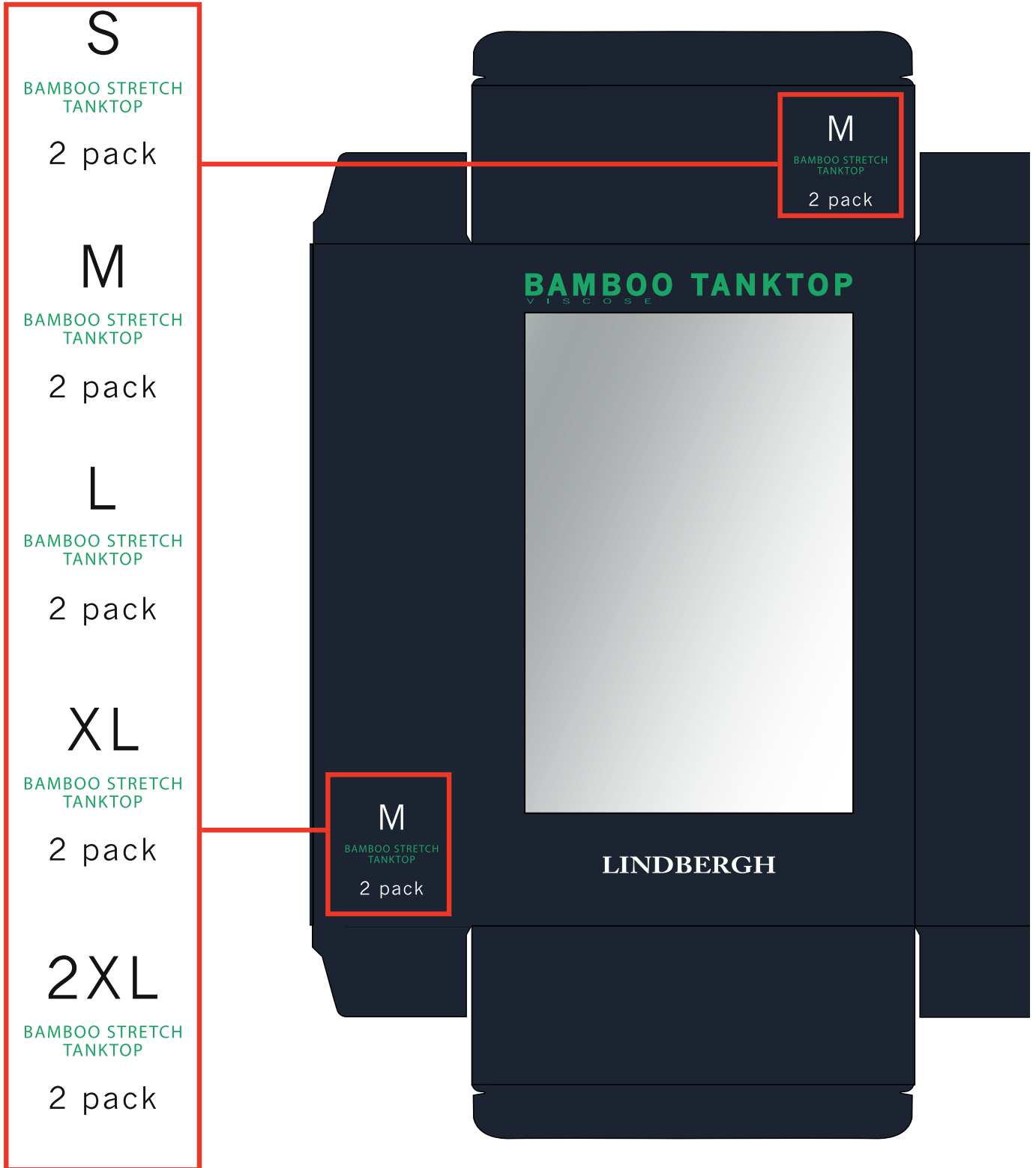
**PANTONE**  
**GREEN 626C**  
**WHITE**

**IMPORTANT TO USE CORRECT SUPPLIER FSC NUMBER  
ACCORDING TO PRODUCT AND BOX**

<b>Label:</b> <b>LINDBERGH</b>	<b>Date:</b> 09/04/2019 <b>Modification date:</b> 8 October 2025 11:47 am	
<b>Description:</b> Label instruction for 2-pack tank top	<b>Labels instruc. No.:</b> LBB-9021	<b>Design:</b> TK/TMA/AKR

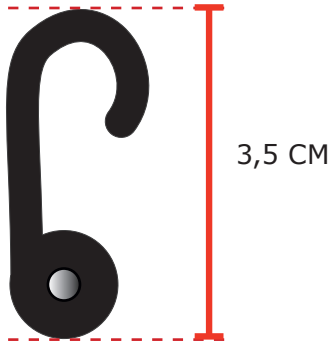
**Box size print:**

**-Pls use org. printfile**



<b>Label:</b> <b>LINDBERGH</b>	<b>Date:</b> 09/04/2019 <b>Modification date:</b> 8 October 2025 11:47 am	
<b>Description:</b> Label instruction for 2-pack tank top	<b>Labels instruc. No.:</b> LBB-9021	<b>Design:</b> TK/TMA/AKR

**Plastic hook with metal split**



centered on box

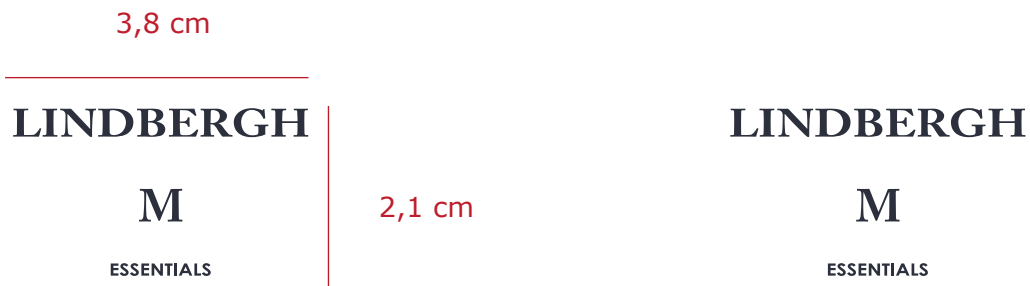


<b>Label:</b> <b>LINDBERGH</b>	<b>Date:</b> 09/04/2019 <b>Modification date:</b> 8 October 2025 11:47 am	
<b>Description:</b> Label instruction for 2-pack tank top	<b>Labels instruc. No.:</b> LBB-9021	<b>Design:</b> TK/TMA/AKR

**NECK LABEL PRINT LBH-W-506E**

**Print type:** Pigment print  
**Colours:** See program

**1:1 size AW:**



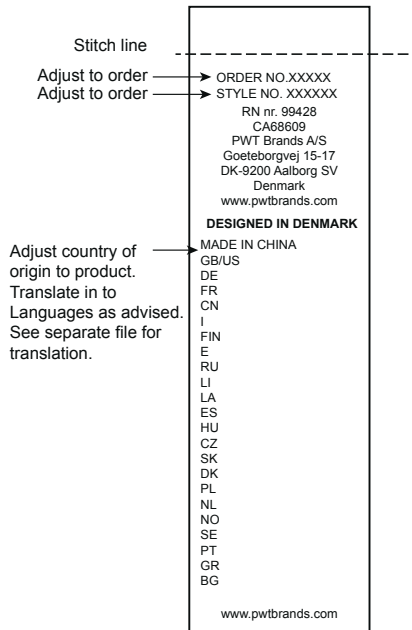
**Placement:**  
Center back 1 cm from neck tape



<b>Label:</b> <b>LINDBERGH</b>	<b>Date:</b> 09/04/2019 <b>Modification date:</b> 8 October 2025 11:47 am	
<b>Description:</b> Label instruction for 2-pack tank top	<b>Labels instruc. No.:</b> LBB-9021	<b>Design:</b> TK/TMA/AKR

## Carelabel instructions:

Please see suppliermanual for instructions



<b>Label:</b> <b>LINDBERGH</b>	<b>Date: 09/04/2019</b> <b>Modification date:</b> <b>8 October 2025 11:47 am</b>	
<b>Description:</b> Label instruction for 2-pack tank top	<b>Labels instruc. No.:</b> LBB-9021	<b>Design:</b> TK/TMA/AKR

**Box when folded**

