

<b>Label:</b> <b>LINDBERGH</b>	<b>Date:</b> 05/09/2022 <b>Modification date:</b> 22 November 2024 10:30 am	
<b>Description:</b> Label instruction for 3-pack COTTON STRETCH boxers	<b>Labels instruc. No.:</b> LBH-W-9314	<b>Design:</b> AKR

**Box for 3 pack boxers. LBA-721** (BOX LBH-W-703 WITH NEW ARTWORK)

**Colours :**



Main box col.:Brilliant white 14-4001 TCX

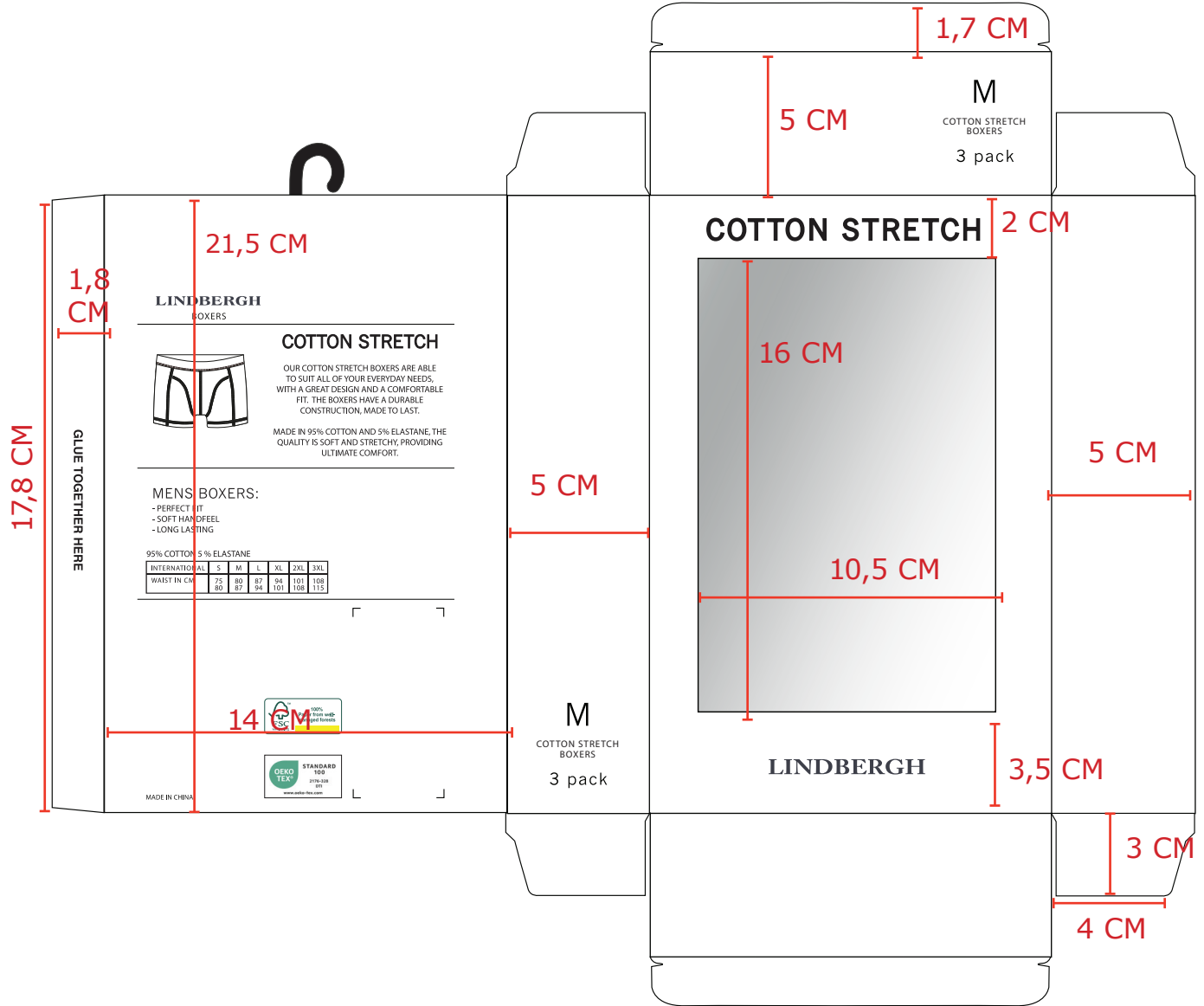
Text col.:Black beauty 19-3911 TCX

Window:see through plastic

<b>Label:</b> <b>LINDBERGH</b>	<b>Date:</b> 05/09/2022 <b>Modification date:</b> 22 November 2024 10:30 am	
<b>Description:</b> Label instruction for 3-pack COTTON STRETCH boxers	<b>Labels instruc. No.:</b> LBH-W-9314	<b>Design:</b> AKR

**Folding Instruction:**

BELOW DRAWING IS NOT TO SCALE



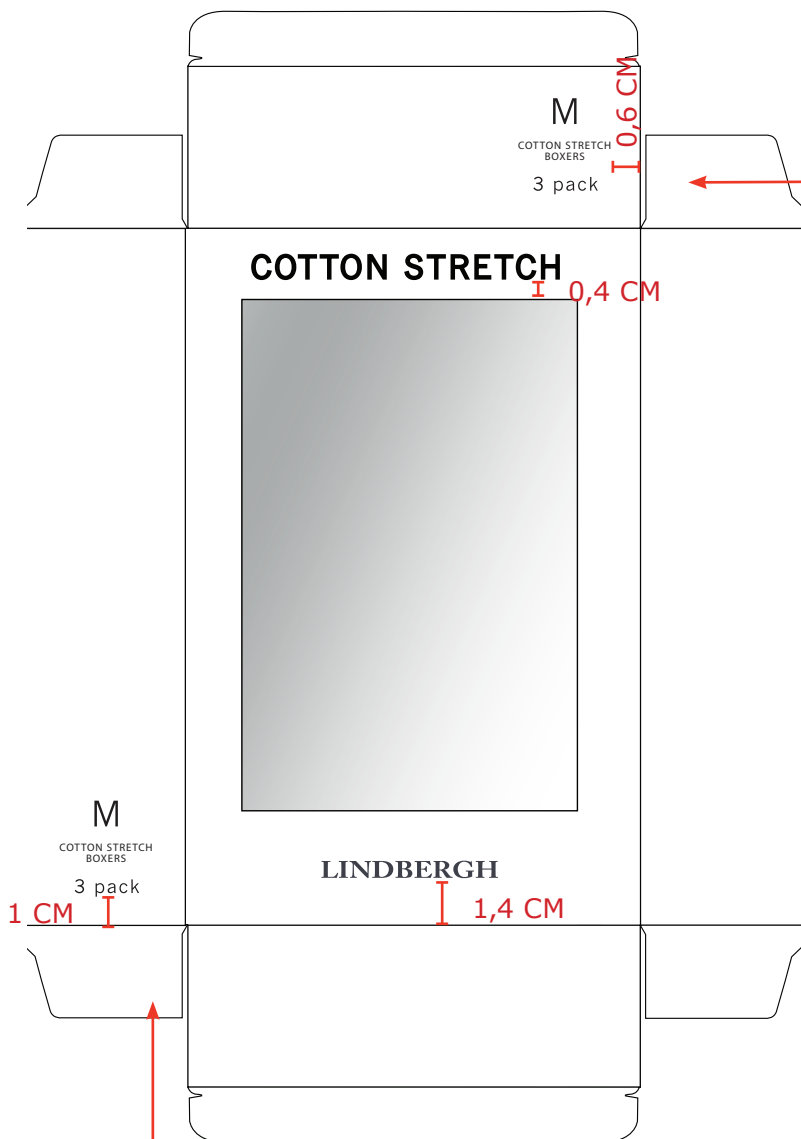
— Folding lines

○ Box material

● See through plastic

<b>Label:</b> <b>LINDBERGH</b>	<b>Date:</b> 05/09/2022 <b>Modification date:</b> 22 November 2024 10:30 am	
<b>Description:</b> Label instruction for 3-pack COTTON STRETCH boxers	<b>Labels instruc. No.:</b> LBH-W-9314	<b>Design:</b> AKR

**Print placement:** - Please use org. print file but change size on box accordingly



**M**

COTTON STRETCH  
BOXERS

3 pack

---

width: 3 cm  
Height: 3 cm

CENTERPLACED 0,6 CM  
FROM SIDE

**M**

COTTON STRETCH  
BOXERS

3 pack

Wi: 3 cm  
Height: 3 cm

CENTERPLACED 1 CM  
FROM BOTTOM

**Logo**

**LINDBERGH**

Width: 7 cm  
Height: 0,7 cm

CENTER PLACED 1,4 CM  
FROM BOTTOM

**COTTON STRETCH**

Width: 9,5 cm  
Height: 0,75 cm

CENTERPLACED  
ABOVE PLASTIC WINDOW EDGE : 0,4 CM

<b>Label:</b> <b>LINDBERGH</b>	<b>Date:</b> 05/09/2022 <b>Modification date:</b> 22 November 2024 10:30 am	
<b>Description:</b> Label instruction for 3-pack COTTON STRETCH boxers	<b>Labels instruc. No.:</b> LBH-W-9314	<b>Design:</b> AKR

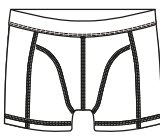
**Print : Back + closure - Please use org. print file but change Size on box accordingly**

**Back print:**

Width: 11,3 cm  
Height: 18,5 cm

**LINDBERGH**  
BOXERS

---



**COTTON STRETCH**

OUR COTTON STRETCH BOXERS ARE ABLE TO SUIT ALL OF YOUR EVERYDAY NEEDS, WITH A GREAT DESIGN AND A COMFORTABLE FIT. THE BOXERS HAVE A DURABLE CONSTRUCTION, MADE TO LAST.

MADE IN 95% COTTON AND 5% ELASTANE, THE QUALITY IS SOFT AND STRETCHY, PROVIDING ULTIMATE COMFORT.

---

**MENS BOXERS:**


- PERFECT FIT
- SOFT HANDFEEL
- LONG LASTING


95% COTTON 5 % ELASTANE

INTERNATIONAL	S	M	L	XL	2XL	3XL
WAIST IN CM	75 80	80 87	87 94	94 101	101 108	108 115

---

7,5 CM

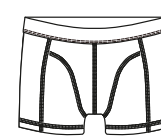




MADE IN CHINA

**LINDBERGH**  
BOXERS

---



**COTTON STRETCH**

OUR COTTON STRETCH BOXERS ARE ABLE TO SUIT ALL OF YOUR EVERYDAY NEEDS, WITH A GREAT DESIGN AND A COMFORTABLE FIT. THE BOXERS HAVE A DURABLE CONSTRUCTION, MADE TO LAST.

MADE IN 95% COTTON AND 5% ELASTANE, THE QUALITY IS SOFT AND STRETCHY, PROVIDING ULTIMATE COMFORT.

---


**MENS BOXERS:**


- PERFECT FIT
- SOFT HANDFEEL
- LONG LASTING

95% COTTON 5 % ELASTANE

INTERNATIONAL	S	M	L	XL	2XL	3XL
WAIST IN CM	75 80	80 87	87 94	94 101	101 108	108 115

---



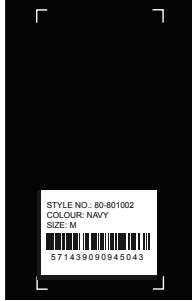


MADE IN CHINA

CENTERPLACED 7,5 CM FROM BOTTOM

<b>Label:</b> <b>LINDBERGH</b>	<b>Date:</b> 05/09/2022 <b>Modification date:</b> 22 November 2024 10:30 am	
<b>Description:</b> Label instruction for 3-pack COTTON STRETCH boxers	<b>Labels instruc. No.:</b> LBH-W-9314	<b>Design:</b> AKR

STICKER for salesmand sample



Follow instruction no. :  
007 salesman sticker

BARCODE for  
Production

Barcode  
Placement  
(for production  
Only)  
Place price  
Sticker at fixing  
Points.

STYLE NO.: XX-00000



COL: Charcoal

**SIZE: M**

DKK	3000.00
SEK	3000.00
NOK	3000.00
EUR	350.00
GBP	350.00

Recommended retail price.  
Price may differ due to local VAT  
and economic conditions

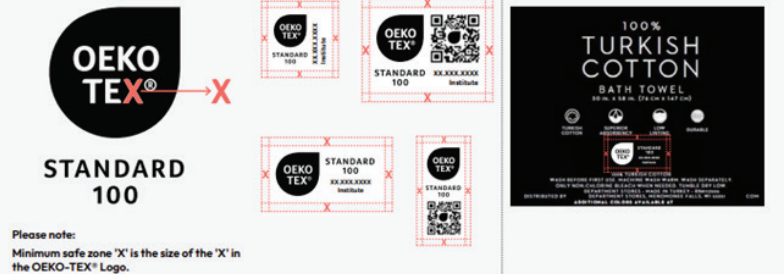
Oekotex print logo:



Oeko-tex logo color ref:

Label Design Guideline Colour Values			
	OEKO-TEX® Green	Black	White
<b>PRINT</b>			
Pantone U	Green U	Black U	-
Pantone C	Green C	Black C	-
CMYK	084 100 057 10	0 100 100 0	100 0 0 0
RAL DESIGN	100 60 45	000 30 00	000 90 00
<b>DIGITAL</b>			
RGB	r:0 g:166 b:135	r:0 g:0 b:0	r:255 g:255 b:255
HEX	#00AC8C	#000000	#FFFFFF

Label Design Guideline  
Safe Zone + Placement



FSC print logo:



Placement :



0,8 cm between



FSC logo color ref:

**PANTONE**  
**GREEN 626C**  
**WHITE**

**IMPORTANT TO USE CORRECT SUPPLIER FSC NUMBER  
ACCORDING TO BOX**

<b>Label:</b> <b>LINDBERGH</b>	<b>Date:</b> 05/09/2022 <b>Modification date:</b> 22 November 2024 10:30 am	
<b>Description:</b> Label instruction for 3-pack COTTON STRETCH boxers	<b>Labels instruc. No.:</b> LBH-W-9314	<b>Design:</b> AKR

**S**

**Print for size :**

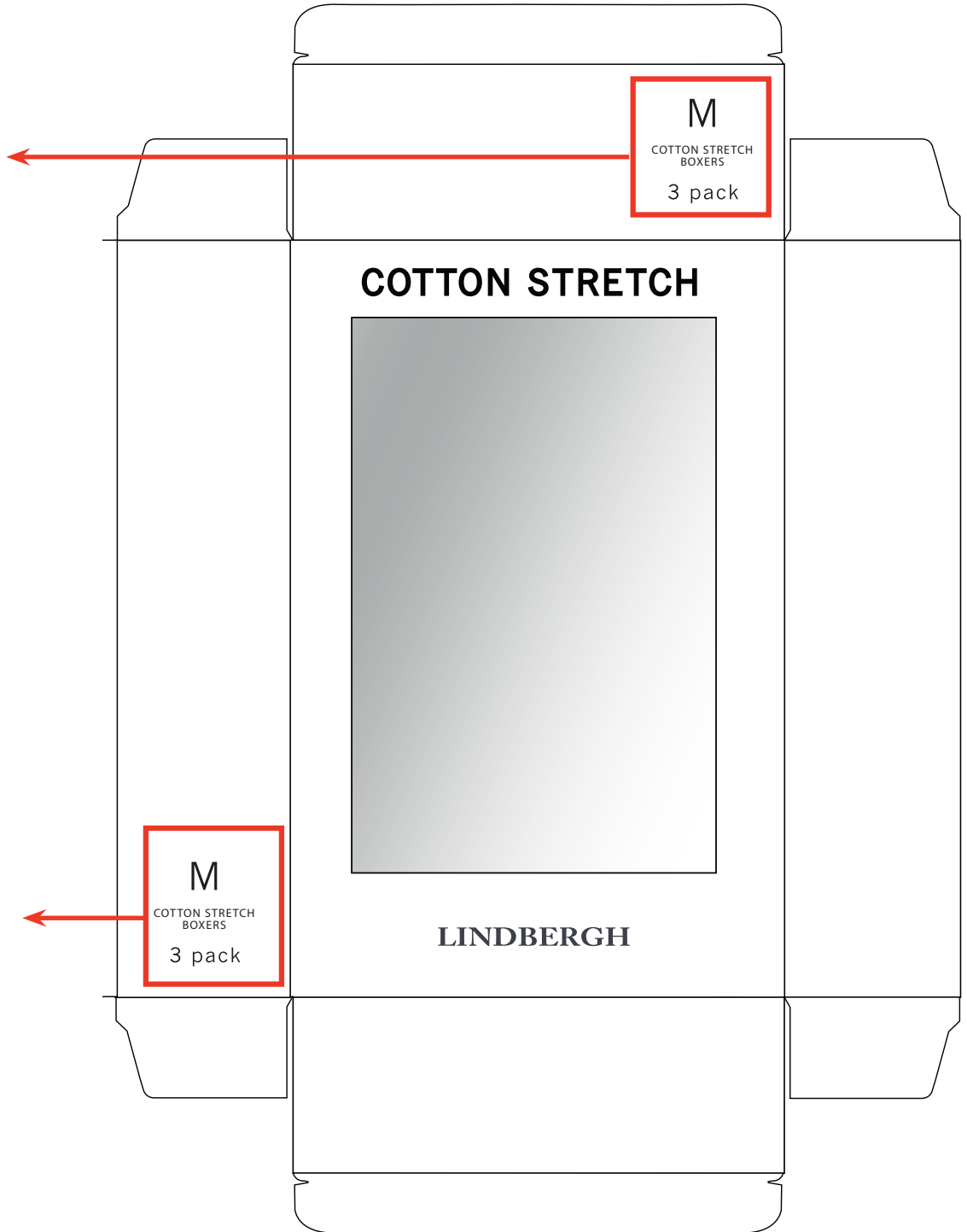
COTTON STRETCH  
BOXERS

**- Please use org. print file but change size on box accordingly**

3 pack

**M**

COTTON STRETCH  
BOXERS



**M**  
COTTON STRETCH  
BOXERS  
3 pack

3 pack

**L**

COTTON STRETCH  
BOXERS

3 pack

**XL**

COTTON STRETCH  
BOXERS

3 pack

**2XL**

COTTON STRETCH  
BOXERS

3 pack

**3XL**

COTTON STRETCH  
BOXERS

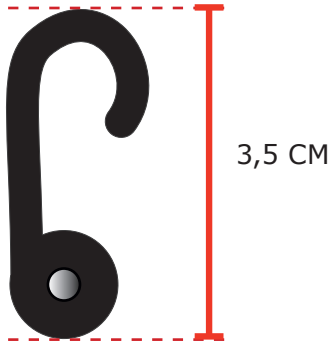
3 pack

**M**  
COTTON STRETCH  
BOXERS  
3 pack

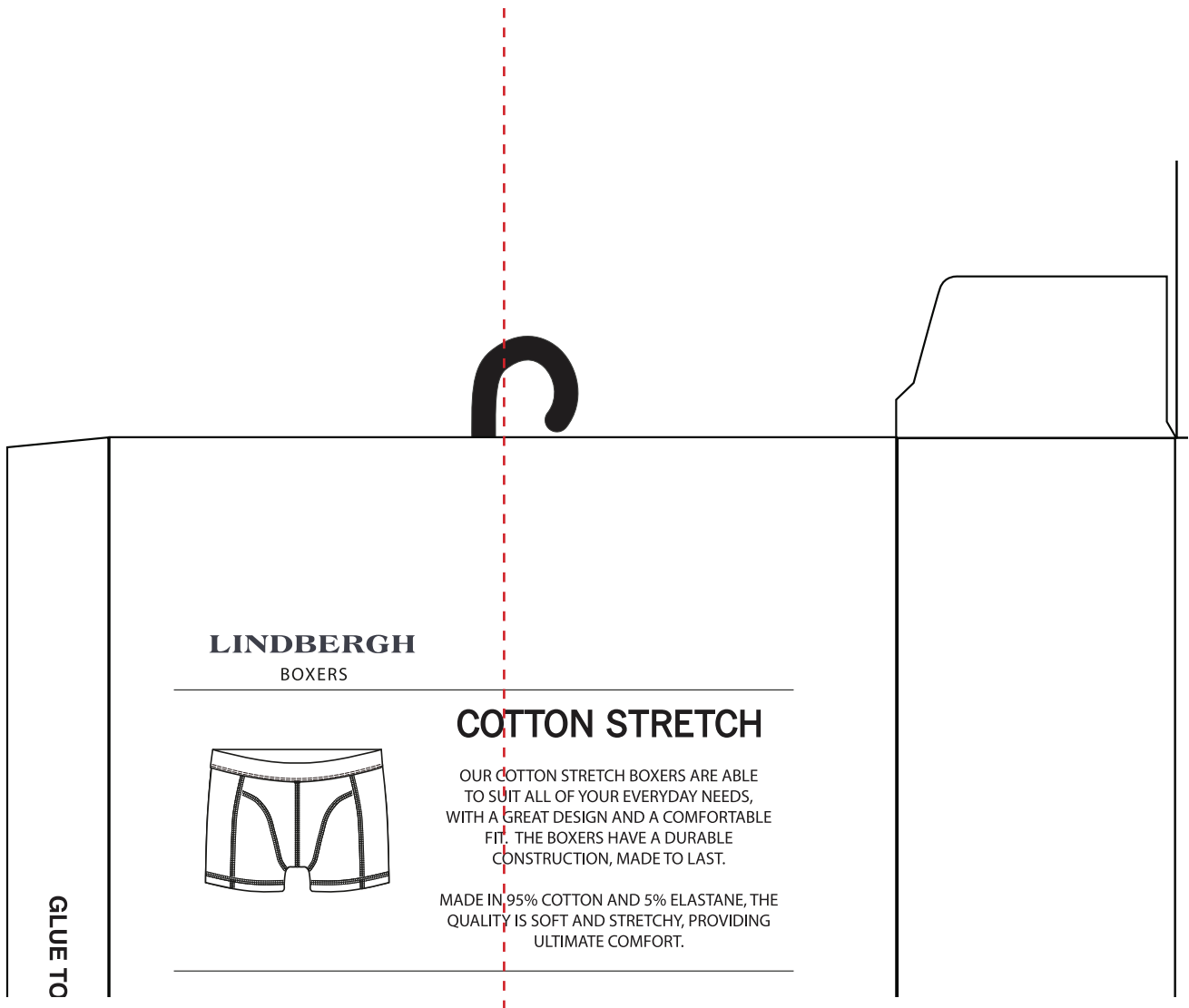
**LINDBERGH**

<b>Label:</b> <b>LINDBERGH</b>	<b>Date:</b> 05/09/2022 <b>Modification date:</b> 22 November 2024 10:30 am	
<b>Description:</b> Label instruction for 3-pack COTTON STRETCH boxers	<b>Labels instruc. No.:</b> LBH-W-9314	<b>Design:</b> AKR

**Plastic hook with metal split**



centered on box



<b>Label:</b> <b>LINDBERGH</b>	<b>Date:</b> 05/09/2022 <b>Modification date:</b> 21 February 2025 10:47 am	
<b>Description:</b> Label instruction for 3-pack COTTON STRETCH boxers	<b>Labels instruc. No.:</b> LBH-W-9314	<b>Design:</b> AKR

## Label instructions:

Find correct RN and CA number in supplier manual under packing and labeling → special orders. Please center text, when correct number is added.

### Made in sticker

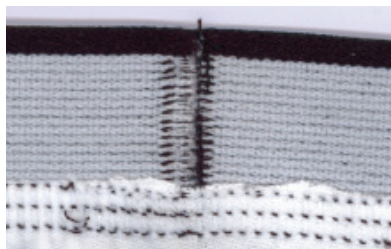
Ref. no.: PWT-102 (lindbergh)

MADE IN XXXXXX  
FABRIQUE EN XXXXXX

### Placement:

Please see separate instruction.

PLEASE PLACE SIDESEAM AT RIGHT SIDE



### Small

STYLE: XX-XXXXX  
ORDER: XXXXXXXXX

RN no. XXXX  
CA no. XXXX

WASH WITH SIMILAR COLOURS  
MAX SHRINKAGE 5%.

47,5% MODAL  
42,5% COTTON  
10% ELASTANE



### X Large

STYLE: XX-XXXXX  
ORDER: XXXXXXXXX

RN no. XXXX  
CA no. XXXX

WASH WITH SIMILAR COLOURS  
MAX SHRINKAGE 5%.

47,5% MODAL  
42,5% COTTON  
10% ELASTANE



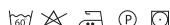
### Medium

STYLE: XX-XXXXX  
ORDER: XXXXXXXXX

RN no. XXXX  
CA no. XXXX

WASH WITH SIMILAR COLOURS  
MAX SHRINKAGE 5%.

47,5% MODAL  
42,5% COTTON  
10% ELASTANE



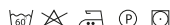
### 2X Large

STYLE: XX-XXXXX  
ORDER: XXXXXXXXX

RN no. XXXX  
CA no. XXXX

WASH WITH SIMILAR COLOURS  
MAX SHRINKAGE 5%.

47,5% MODAL  
42,5% COTTON  
10% ELASTANE



### Large

STYLE: XX-XXXXX  
ORDER: XXXXXXXXX

RN no. XXXX  
CA no. XXXX

WASH WITH SIMILAR COLOURS  
MAX SHRINKAGE 5%.

47,5% MODAL  
42,5% COTTON  
10% ELASTANE



### 3X Large

STYLE: XX-XXXXX  
ORDER: XXXXXXXXX

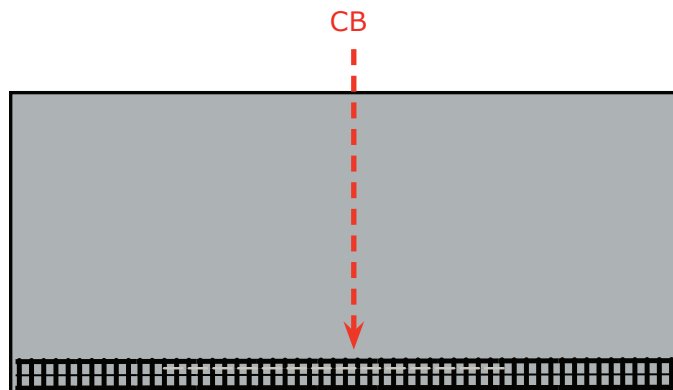
RN no. XXXX  
CA no. XXXX

WASH WITH SIMILAR COLOURS  
MAX SHRINKAGE 5%.

47,5% MODAL  
42,5% COTTON  
10% ELASTANE



## Elasticated waistband inside, with printed size label and carelabel



2,5 CM

### Medium

2 CM

STYLE: XX-XXXXX  
ORDER: XXXXXXXXX

RN no. XXXX  
CA no. XXXX

WASH WITH SIMILAR COLOURS  
MAX SHRINKAGE 5%.

5% LYCRA  
95% COTTON



Size label font	Arial Bold
Size label fontsize	14
Carelabel font	Arial
Carelabel fontsize	9
Print colour on light fabrics	Lt grey 15-4101 TCX
Print colour on dark fabrics	White

<b>Label:</b> <b>LINDBERGH</b>	<b>Date:</b> 05/09/2022 <b>Modification date:</b> 21 February 2025 10:47 am	
<b>Description:</b> Label instruction for 3-pack COTTON STRETCH boxers	<b>Labels instruc. No.:</b> LBH-W-9314	<b>Design:</b> AKR

**Box when folded**

