

Label: LINDBERGH	Date: 05/08/22 Modification date: 24 October 2025 11:31 am	
Description: Leather Badge - BLACK	Labels instruc. No.: LBJ-804G	Design: JTG

Leather badge

Description:

H: 5 cm / L: 7 cm
Rounded corners
Stitch around, max 2mm from edges edges

Badge placement:

See TP

Quality:

2 mm 100% Leather. Smooth soft finish

Color:

Badge col: BLACK
See original sample ref
Thread col: Match badge col

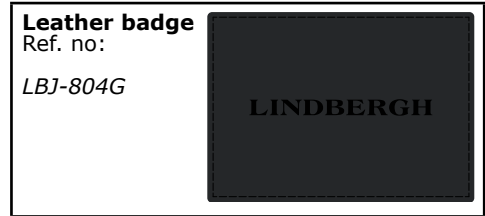
Artwork:

LINDBERGH

Size: H:0,4 cm / L: 4,8 cm
Placement: center of badge
Construction: Embossed (sink in)
NB! *Make sunken part clear, clean and visible*
(see sample)

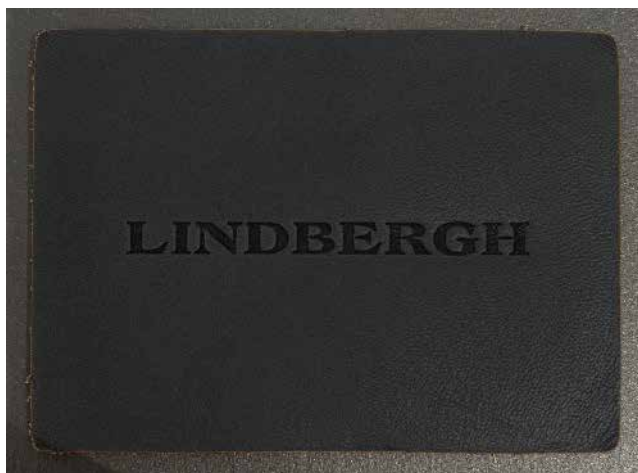
Leather badge

For use in InDesign TP:



Quality and design

Ref.pic:



Approved badge

Sample: