

<b>Label:</b> LINDBERGH	<b>Date:</b> 05/08/22 <b>Modification date:</b> 24 October 2025 12:03 pm	
<b>Description:</b> Leather Badge - DK BROWN	<b>Labels instruc. No.:</b> LBJ-804K	<b>Design:</b> JTG

## Leather badge

### Description:

H: 5 cm / L: 7 cm  
Rounded corners  
Stitch around, max 2mm from edges edges

### Badge placement:

See TP

### Quality:

2 mm 100% Leather. Smooth soft finish

### Color:

Badge col: DK BROWN  
See original SWATCH ref. Lamb N2\_brown C2  
Thread col: Match badge col

### Artwork:

# LINDBERGH

Size: H:0,4 cm / L: 4,8 cm  
Placement: center of badge  
Construction: Embossed (sink in)  
NB! *Make sunken part clear, clean and visible*  
(see sample)

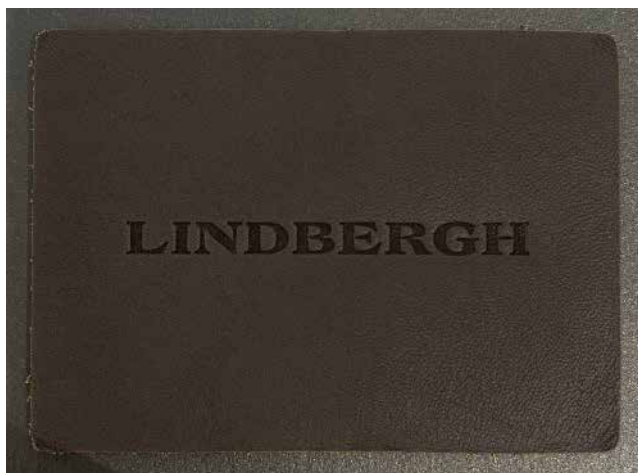
## Leather badge

For use in InDesign TP:



## Quality and design

Ref.pic:



## Approved badge

Sample: