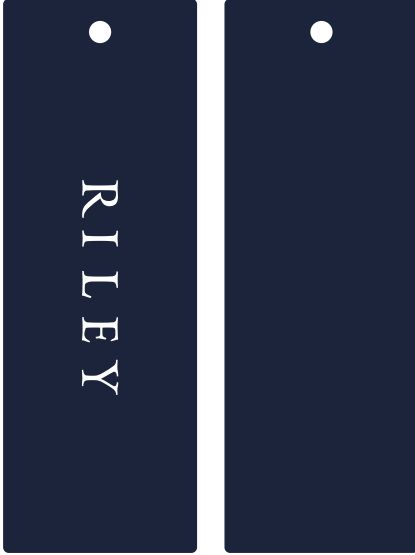


Label: RILEY	Description : RILEY- RESORT SHIRTS	Date: 04/08/20 Modification date: 3 November 2025 7:57 am
	Label instruction no: RIL-2003	Design : MKS

Main hangtag RIL-900

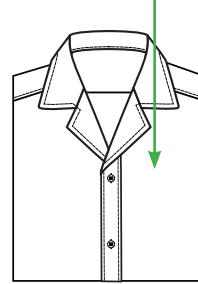
FRONT

BACK



Tag placement

Hangtag must be fixed with knot at 1st button hole. See sketch below



Size: 35 x 100 mm
Hole: Ø 4 mm

Production sticker placement



Price sticker placement
(for production only)

SMS sticker placement



SMS sticker placement

Follow instruction no. :
007 salesman sticker from
Lindbergh

Label: RILEY	Description : RILEY- RESORT SHIRTS	Date: 04/08/20 Modification date: 3 November 2025 7:57 am
	Label instruction no: RIL-2003	Design : MKS

LABEL RIL-800



Size: 20 x 55 mm
Endfold: 7 mm

SIZE LABEL REF. RIL-840:

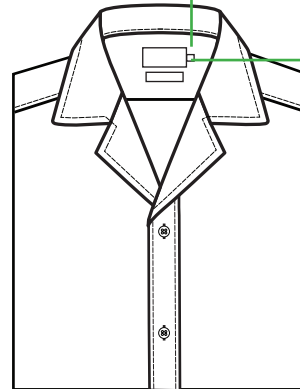


SIZE LABEL REF. RIL-841:



PLACEMENT:

Size label:
Placed 5 mm below
main label , centered
Along right side



Neck label must be
placed 1,5 cm below
collar stand. Stitch
only both sides (open
top/bottom)

PLEASE CHECK MEASUREMENT CHART FOR KIND OF SIZE LABEL

Label: R I L E Y	Description : RILEY- RESORT SHIRTS	Date: 04/08/20 Modification date: 3 November 2025 7:57 am
	Label instruction no: RIL-2003	Design : MKS

PLEASE CHECK MEASUREMENT CHART FOR KIND OF FIT LABEL

STORYTELLING/FITTING LABEL:



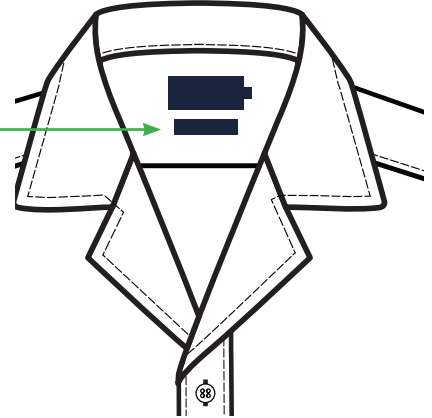
Size: 8 x 35 mm
Endfold: 7 mm

See program
For label number/ref

PLACEMENT :

Below main label
= 1 cm

Stitch both sides.
Col. match label colour



2 STORYTELLING/FITTING LABEL:



Size: 8 x 35 mm
Endfold: 7 mm

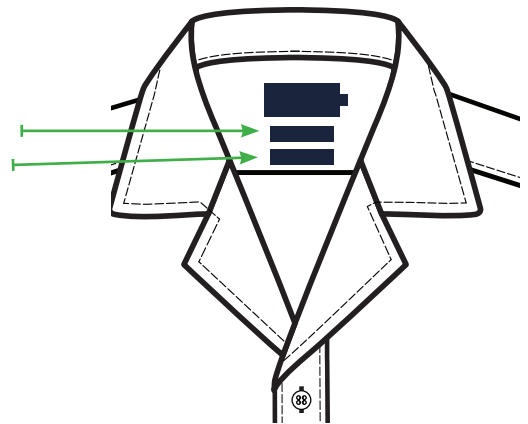
See program
For label number/ref

PLACEMENT :

Distance between
the storytelling
labels is 1 cm

Stitch both sides.
Col. match label colour

Fit / storytelling label 1
Fit / storytelling label 2

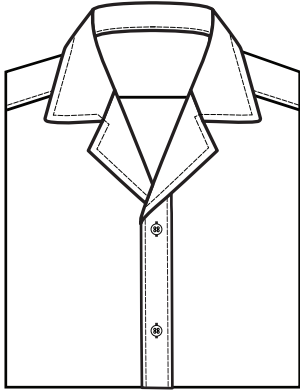


Label: RILEY	Description : RILEY- RESORT SHIRTS	Date: 04/08/20 Modification date: 3 November 2025 7:57 am
	Label instruction no: RIL-2003	Design : MKS

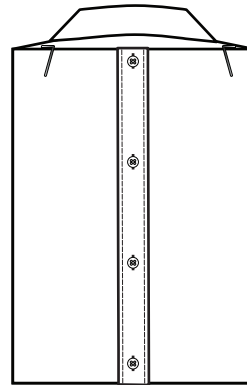
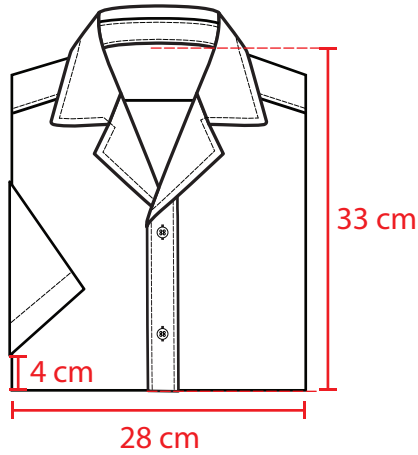
Folding and packing instruction. Resort collar

Folded and packed:
Width: 28 cm
Height: 33 cm

L/S:

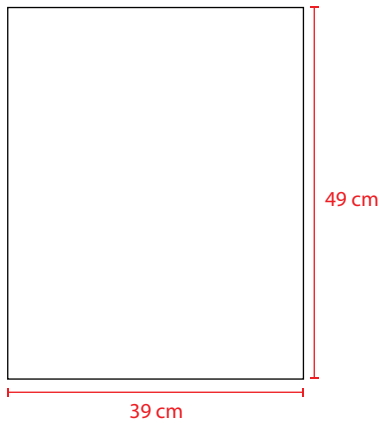


S/S:



Please use metal clips to fix the shirt

Tissue paper



4 layers of tissue paper