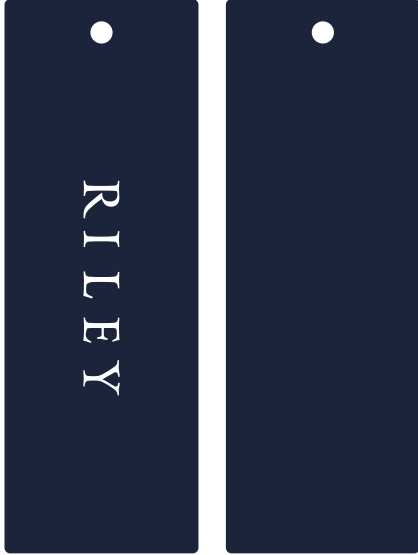


Label: RILEY	Description : RILEY - Overshirt ALL SIZE + FIT	Date: 10/08/20 Modification date: 25 August 2025 10:21 am
	Label instruction no: RIL-3124	Design : MKS

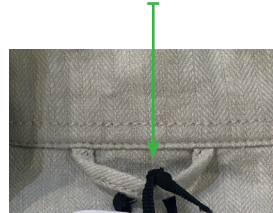
Main hangtag RIL-900

FRONT

BACK



Hangtag must be fixed at the neck strap/LOOP



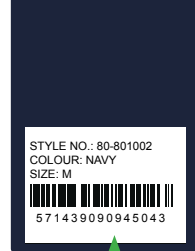
Size: 35 x 100 mm
Hole: Ø 4 mm

Production sticker placement



Price sticker placement
(for production only)

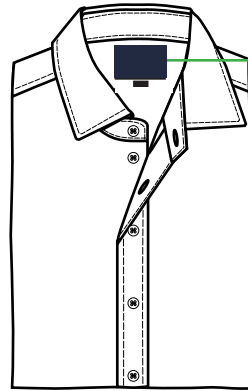
SMS sticker placement



SMS sticker placement
Follow instruction no. :
007 salesman sticker from
Lindbergh

Label: RILEY	Description : RILEY - Overshirt ALL SIZE + FIT	Date: 10/08/20 Modification date: 25 August 2025 10:21 am
	Label instruction no: RIL-3124	Design : MKS

LABEL RIL-803



Main label must be placed 2 cm below collar stand.

Stitch all 4 sides.
Col. match label colour



PLEASE CHECK MEASUREMENT CHART FOR KIND OF FIT LABEL

SIZE LABEL REF. RIL-840:



Sewn at bottom of main label
Center placed

PLEASE CHECK MEASUREMENT CHART FOR KIND OF SIZE LABEL

Label: RILEY	Description : RILEY - Overshirt ALL SIZE + FIT	Date: 10/08/20 Modification date: 25 August 2025 10:21 am
	Label instruction no: RIL-3124	Design : MKS

STORYTELLING/FITTING LABEL:



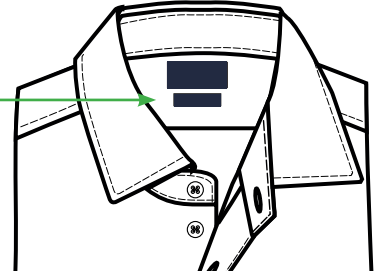
Size: 8 x 35 mm
Endfold: 7 mm

See program
For label number/ref

PLACEMENT :

Below main label
= 1 cm

Stitch both sides.
Col. match label colour



2 STORYTELLING/FITTING LABEL:



Size: 8 x 35 mm
Endfold: 7 mm

See program
For label number/ref

PLACEMENT :

Distance between
the storytelling
labels is 1 cm

Stitch both sides.
Col. match label colour

Storytelling label 1
Storytelling label 2

