

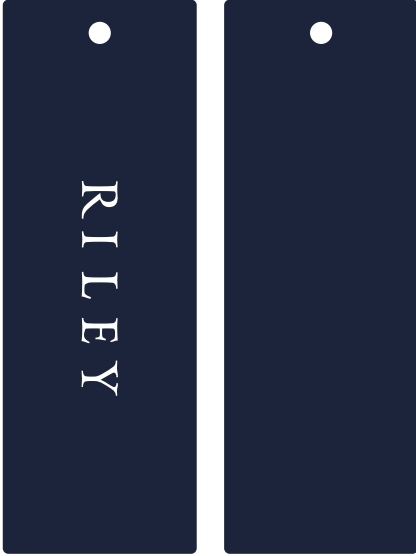
<b>Label:</b>  RILEY	<b>Description :</b> RILEY - OUTERWEAR - UNLINED	<b>Date:</b> 21/02/23 <b>Modification date:</b> 24 April 2026 8:05 am
	<b>Label instruction no:</b> RIL-3401	<b>Design :</b> MKS

## Main hang tag

### Main hangtag RIL-900

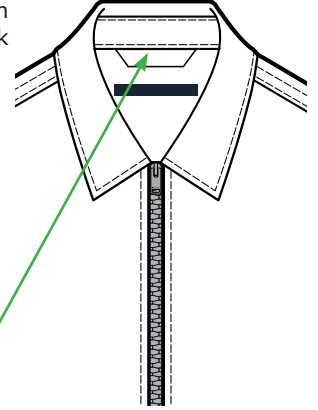
FRONT

BACK



Size: 35 x 100 mm  
Hole: Ø 4 mm

Fix Hang Tag with knot at back neck hanging loop. See sketch here

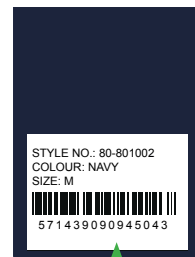


### Production sticker placement



**Price sticker placement**  
(for production only)

### SMS sticker placement



**SMS sticker placement**  
Follow instruction no. :  
007 salesman sticker from  
Lindbergh

<b>Label:</b>  RILEY	<b>Description :</b> RILEY - OUTERWEAR - UNLINED	<b>Date:</b> 21/02/23 <b>Modification date:</b> 24 April 2026 8:05 am
	<b>Label instruction no:</b> RIL-3401	<b>Design :</b> MKS

## Labels Instructions

### Main label + size label + extra label

Story telling labels  
See tech pack for label ref  
number and placement

**Main label**  
**RIL-800**

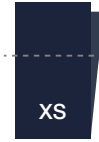


Stitch only 2 side edges.

Unless mentioned  
otherwise in tech pack

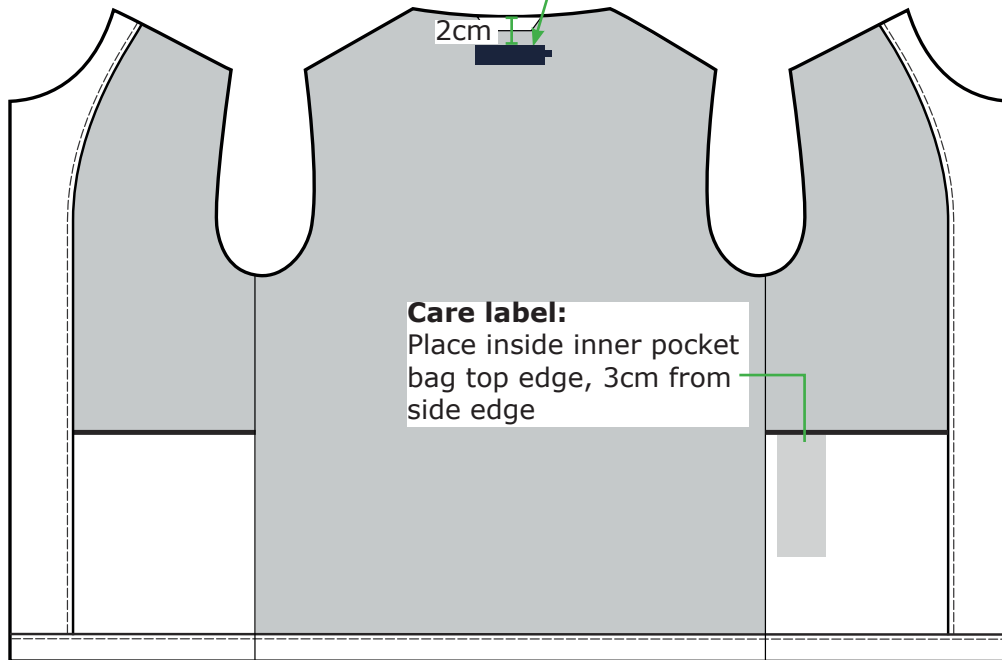
**SIZE LABEL**

**REF. RIL-840:**



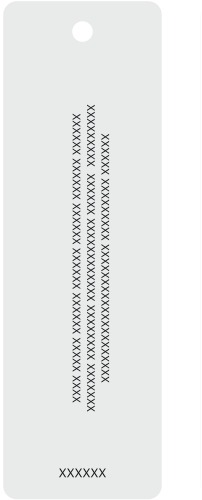
**PLACEMENT:**

Size label:  
Placed 5 mm  
below main label ,  
centered



<b>Label:</b>  R I L E Y	<b>Description :</b> RILEY - OUTERWEAR - UNLINED	<b>Date:</b> 21/02/23 <b>Modification date:</b> 24 April 2026 8:05 am
	<b>Label instruction no:</b> RIL-3401	<b>Design :</b> MKS

+ Story telling hang tag  
(if any)  
- see tech pack for info  
for which layout to use



FRONT



**NOTE:**  
Storytelling hangtag  
should be placed **BEHIND**  
main hangtag