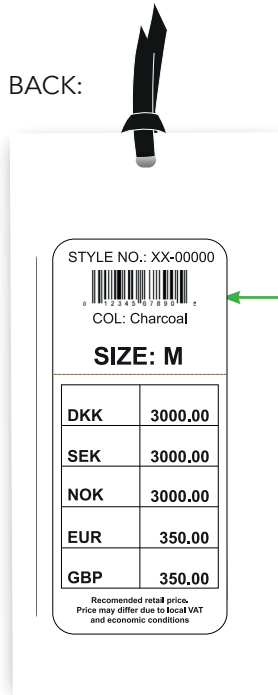
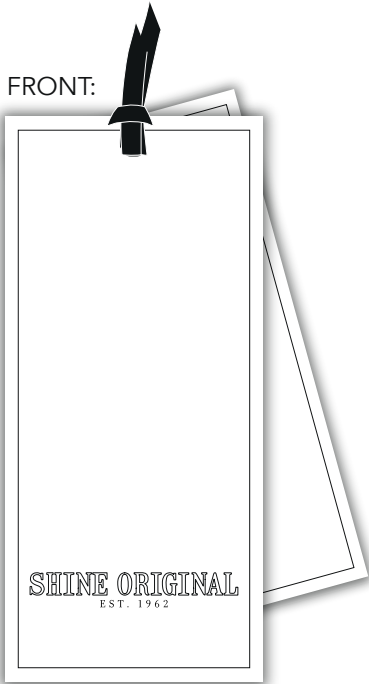


Label: SHINE ORIGINAL	Description: PANTS + SHORTS W. ELASTIC WAISTBAND	Output date: 22/03/18 Modification date: 1 July 2025 8:09 am
	Label instruction no: SHO-0002	Design : SAG/AKR/MKS



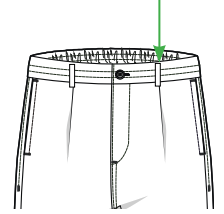
Sticker placement:
(for production only)

Place price sticker between fixing points.



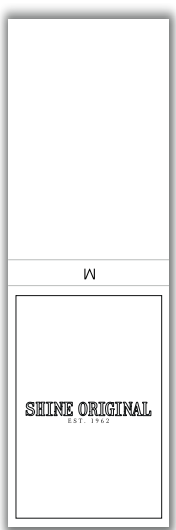
Follow instruction no. :
007 salesman sticker, for
SMS

Hang tag placement:
Hangtag must be fixed
with a knot at beltloop



If no beltloops please
fix it through the size
label inside with a knot.

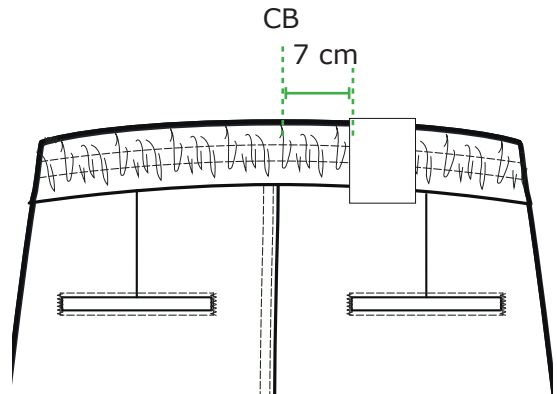
Waist tag:



See program
For waisttag layout/fit

Waist tag must be tagged
on. Thread matching
carboard.

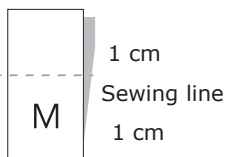
Waist tag placement:



Label: SHINE ORIGINAL	Description: PANTS + SHORTS W. ELASTIC WAISTBAND	Output date: 22/03/18 Modification date: 1 July 2025 8:09 am
	Label instruction no: SHO-0002	Design : SAG/AKR/MKS

Main label

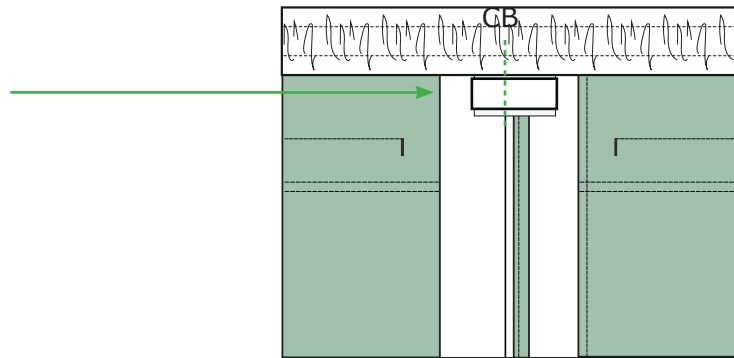
Stitch top of label. See seam allowance and stitch line on instruction



Label placement:

Placement:

Place main label CB under elastic waistband in seam



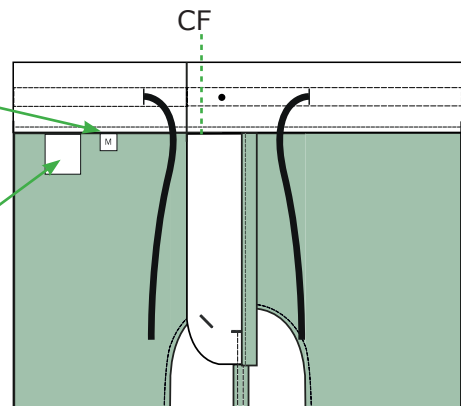
PLEASE CHECK MEASUREMENT CHART FOR KIND OF FIT LABEL



Label placement:

Place size label
8 cm from CF -
Left hand side.

Care label



Label: SHINE ORIGINAL	Description: PANTS + SHORTS W. ELASTIC WAISTBAND	Output date: 22/03/18 Modification date: 1 July 2025 8:09 am
	Label instruction no: SHO-0002	Design : SAG/AKR/MKS

STORYTELLING LABEL:

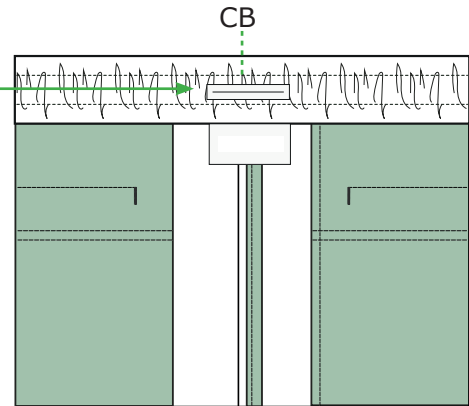


See program
For label reference

Place storytelling label
CB centered with main
label and waistband

Stitch all around label.
Col. match label colour

PLACEMENT - INSIDE:



2 STORYTELLING LABELS:



See program
For label reference

Place storytelling label
CB centered with main
label and waistband

Distance in between the
2 labels is 0,5 cm

Atitch all around label.
Col. match label colour

PLACEMENT - INSIDE:

