

Label: SHINE ORIGINAL	Description : SHINE ORIGINAL - SHIRT - all fit + size + belly band + storytelling	Output date: 22/06/16 Modification date: 15 January 2026 9:59 am
	Label instruction no: SHO -2004	Design : JFI/AKR/JTG/TMA/MKS

Label and Belly band instruction



SHO-720-PK

Technical sketch

FRONT



BACK



Label: SHINE ORIGINAL	Description : SHINE ORIGINAL - SHIRT - all fit + size + belly band + storytelling	Output date: 22/06/16 Modification date: 15 January 2026 9:59 am
	Label instruction no: SHO -2004	Design : JFI/AKR/JTG/TMA/MKS

Label and Belly band instruction

Print instruction for Storytelling

FRONT



Artwork / options: Size

STRETCH FABRIC

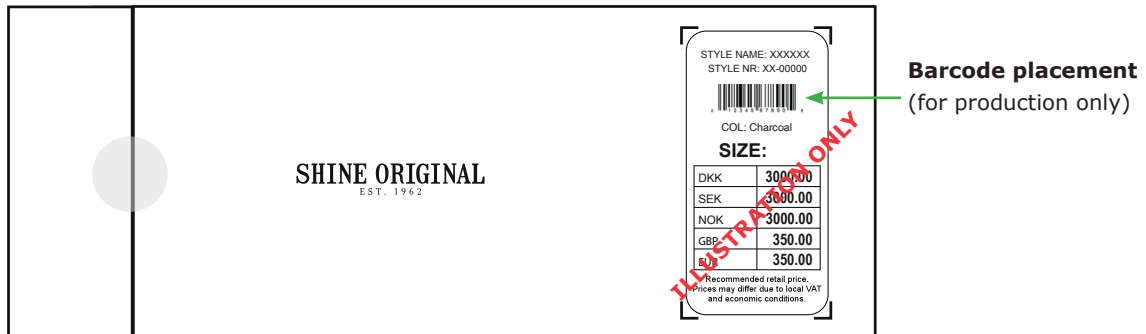
TECHNICAL

SUPERFLEX

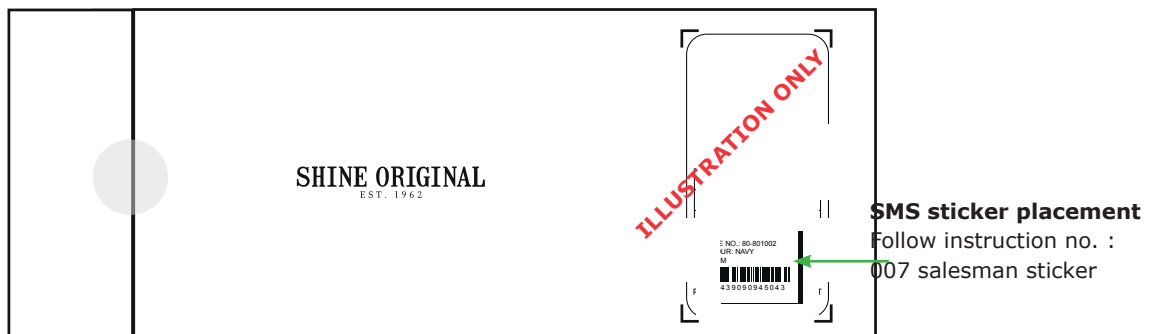
PLEASE CHECK PROGRAM
FOR KIND OF STORYTELLING

Print instruction for Sticker placement

BACK



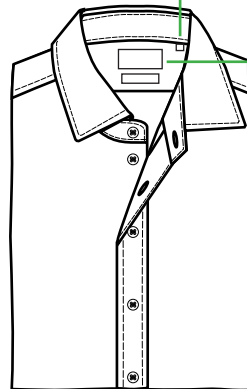
BACK



Label: SHINE ORIGINAL	Description : SHINE ORIGINAL - SHIRT - all fit + size + belly band + storytelling	Output date: 22/06/16 Modification date: 15 January 2026 9:59 am
	Label instrution no: SHO -2004	Design : JFI/AKR/JTG/TMA/MKS

Label and Belly band instruction

SHINE NECKLABEL SIDE FOLDED



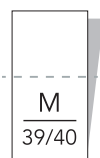
PLACEMENT:

Size label:
Please place 6 cm
from C.B at collar
stand.

Neck label must be
placed 1,5 cm below
collar stand. Stitch
only both sides (open
top/bottom)

**PLEASE CHECK MEASUREMENT CHART
FOR KIND OF FIT LABEL**

SHINE SIZE LABEL SHIRTS



PLEASE CHECK MEASUREMENT CHART FOR KIND OF SIZE LABEL

Label: SHINE ORIGINAL	Description : SHINE ORIGINAL - SHIRT - all fit + size + belly band + storytelling	Output date: 22/06/16 Modification date: 15 January 2026 9:59 am
	Label instruction no: SHO -2004	Design : JFI/AKR/JTG/TMA/MKS

Label and Belly band instruction

STORYTELLING LABEL:

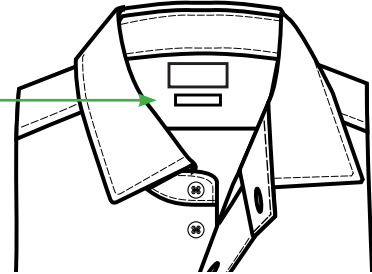


See program
For label number

PLACEMENT :

Below main label
= 1 cm

Stitch both sides.
Col. match label colour



2 STORYTELLING LABELS:



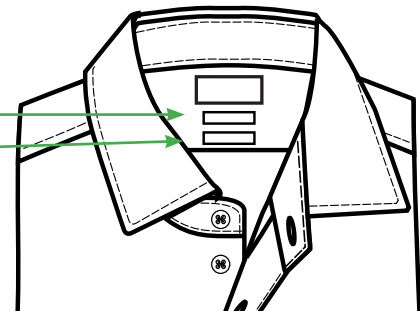
See program
For label number

PLACEMENT :

Distance between
the storytelling
labels is 1 cm

Stitch both sides.
Col. match label colour

Storytelling label 1
Storytelling label 2



Label: SHINE ORIGINAL	Description : SHINE ORIGINAL - SHIRT - all fit + size + belly band + storytelling	Output date: 22/06/16 Modification date: 15 January 2026 9:59 am
	Label instruction no: SHO -2004	Design : JFI/AKR/JTG/TMA/MKS

Label and Belly band instruction

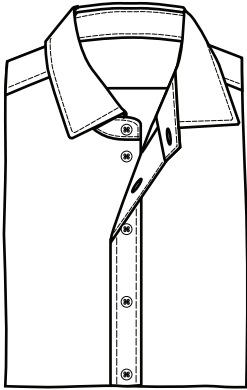
Folding and packing instruction

Folded and packed:

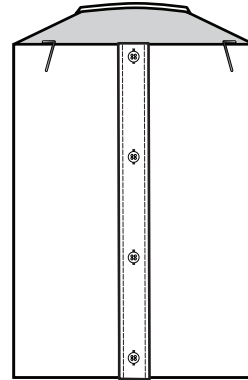
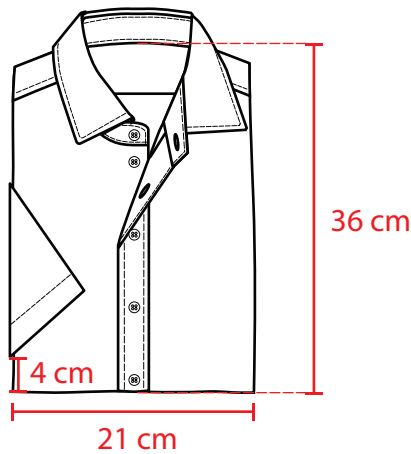
Width: 21 cm

Height: 36 cm

L/S:

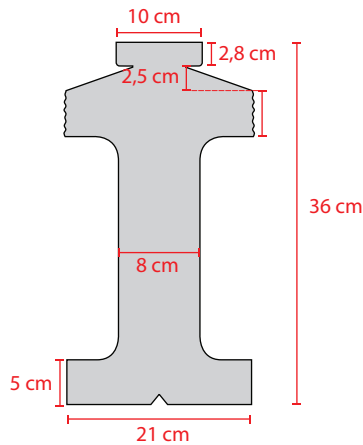
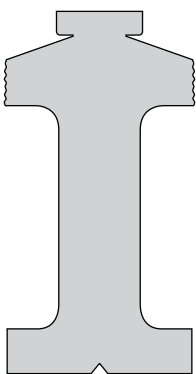


S/S:

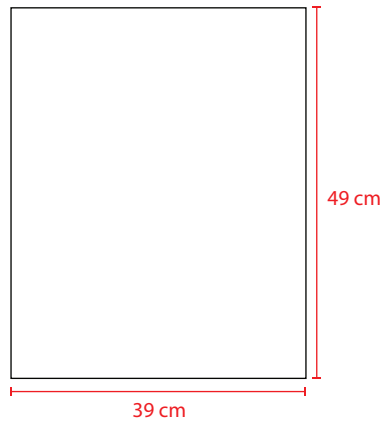


Please use metal clips to fix the shirt

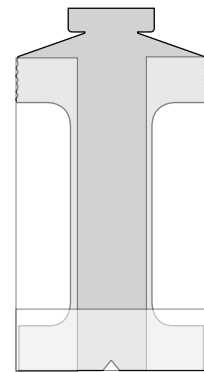
Cardboard



Tissue paper



4 layers of tissue paper

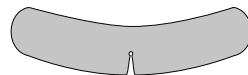


Tissue paper placed and folded as sketch

Plastic collar stand
(inside collar)



Plastic butterfly
(for shirts with fixed collar)



Single butterfly to fix collar.
Each garment must be packed with butterfly underneath collar.