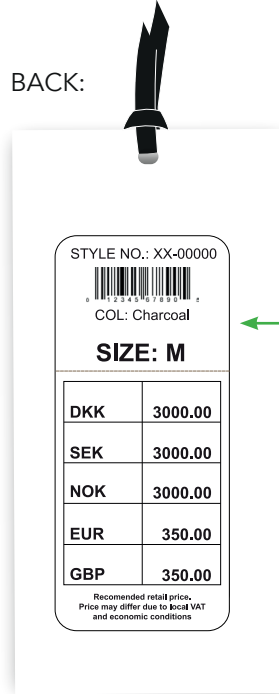


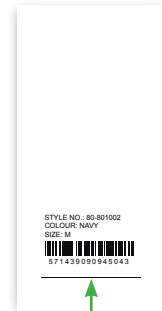
<b>Label:</b> <b>SHINE ORIGINAL</b>	<b>Description :</b> Midfolded main label	<b>Output date:</b> 22/06/16 <b>Modification date:</b> 1 July 2025 8:09 am
	<b>Label instruction no:</b> SHO-4001	<b>Design :</b> MKS

## Label and tag placement instruction



**Barcode placement**  
(for production only)

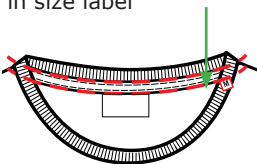
**Price sticker placement**  
Place between the printed fixing  
points.  
(for production only)



**SMS sticker placement**  
Follow instruction no. :  
007 salesman sticker

### Tag placement

Hangtag fixed with knot  
in size label



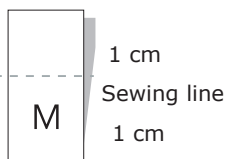
<b>Label:</b> <b>SHINE ORIGINAL</b>	<b>Description :</b> Midfolded main label	<b>Output date:</b> 22/06/16 <b>Modification date:</b> 1 July 2025 8:09 am
	<b>Label instruction no:</b> SHO-4001	<b>Design :</b> MKS

## Label and tag placement instruction

Stitch top of label. See seam allowance and stitch line on instruction



**PLEASE CHECK MEASUREMENT CHART FOR WHAT FIT TO APPLY TO LABEL**



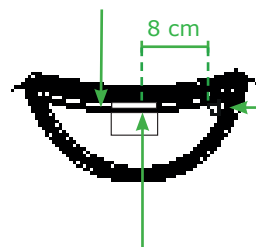
### Storytelling label



See program  
For label number

### Main label placement

CB in neck seam



**Size label placement**  
Below neck tape  
8 cm from CB

**Storytelling label**  
Centered and fixed on to neck tape