

<b>Label:</b> <b>SHINE ORIGINAL</b>	<b>Date: 06/02/2025</b> <b>Modification date:</b> <b>5 December 2025 11:33 am</b>		<b>Style no:</b>
<b>Description:</b> Socks 5 pack - workwear sock	<b>Labels instructions no.</b> SHO-9121A-5PK		<b>Design:</b> <b>MKS</b>

## SOCK TAG \_belly tag for 5-piece pack SHO-916A-5PK

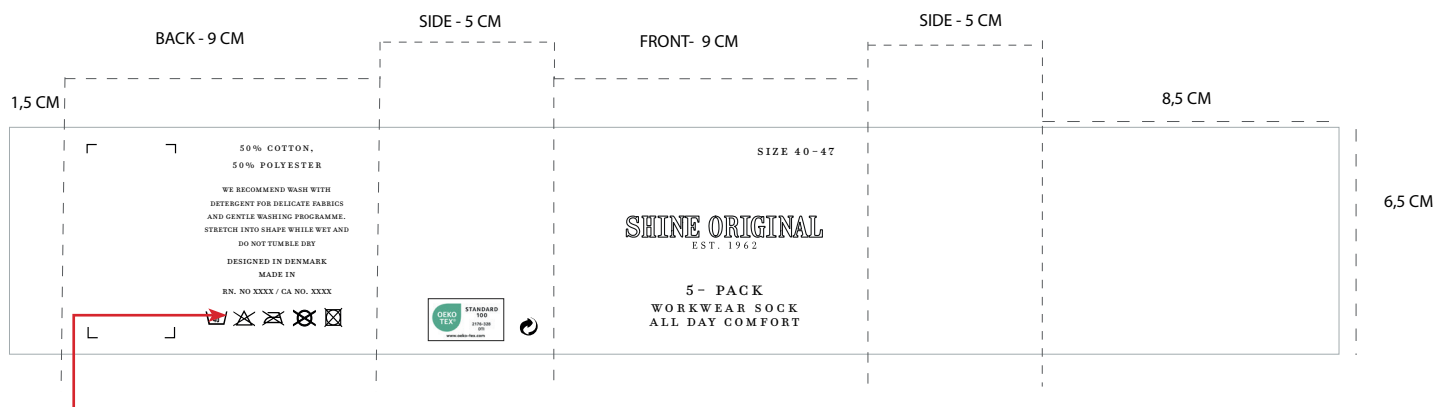


ARTWORK FRONT :



Always fold socks as directed. Heels turning left and leg in front,- Foot at back.

FINISH : PLICK SURFACE:



Find correct RN and CA number in supplier manual under packing and labeling → special orders. Please center text, when correct number is added.

PACKAGING COLOR

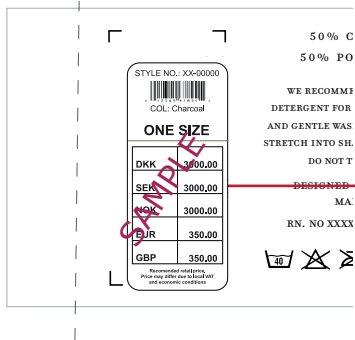
 Same white color as Lindbergh white

ARTWORK COLOR

 Same black color as Lindbergh white

<b>Label:</b> <b>SHINE ORIGINAL</b>	<b>Date: 06/02/2025</b> <b>Modification date:</b> <b>5 December 2025 11:33 am</b>		<b>Style no:</b>
<b>Description:</b> Socks 5 pack - workwear sock	<b>Labels instructions no.</b> SHO-9121A-5PK		<b>Design:</b> MKS

## Barcode for production :



Barcode Placement (for production Only)  
Place price Sticker at fixing Points.

## Oekotex print logo:

## Print : Info placed at side



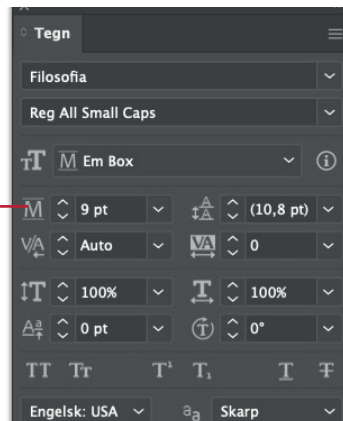
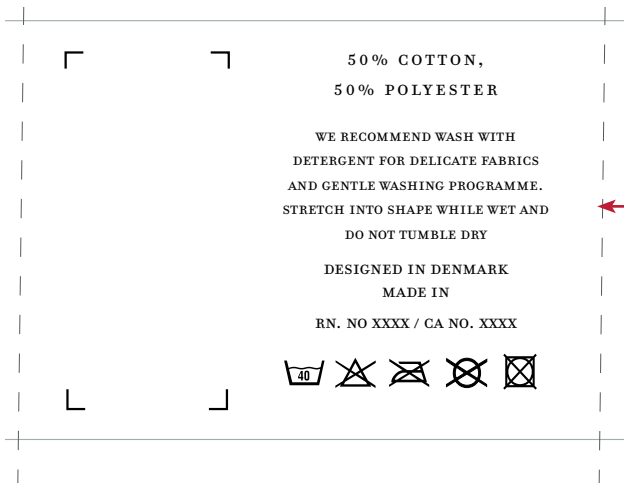
## Oeko-tex logo color ref:



Label Design Guideline  
Colour Values

	OEKO-TEX® Green	Black	White
PRINT			
FontColor U	Green U	Black U	-
FontColor C	Green C	Black C	-
CMYK	84 40 57 10	10 40 90 10	10 40 90 10
RAL DESIGN	170 60 45	000 90 90	000 90 90
DIGITAL			
RGB	r:96 g:135 b:135	r:0 g:0 b:0	r:255 g:255 b:255
HEX	#00AC8C	#000000	#FFFFFF

## Print : Info placed at back



<b>Label:</b> <b>SHINE ORIGINAL</b>	<b>Date: 06/02/2025</b> <b>Modification date:</b> <b>5 December 2025 11:33 am</b>		<b>Style no:</b>
<b>Description:</b> Socks 5 pack - workwear sock	<b>Labels instructions no.</b> SHO-9121A-5PK		<b>Design:</b> <b>MKS</b>

**Print :**  
**Info placed at front**



FONT REF

