

<b>Label:</b> <b>SHINE ORIGINAL</b>	<b>Date: 06/02/2025</b> <b>Modification date:</b> <b>10 December 2025 9:22 am</b>		<b>Style no:</b>
<b>Description:</b> Socks 2 pack - Merino wool	<b>Labels instructions no.</b> SHO-9121B-2PK		<b>Design:</b> MKS

## SOCK TAG \_belly tag for 2-pack SHO-916B-2PK

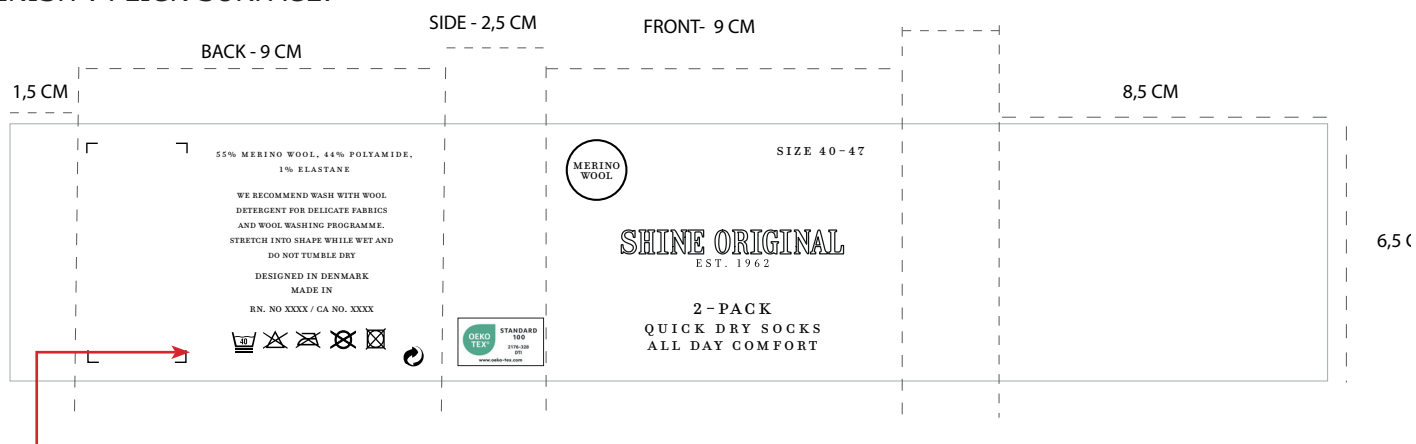


ARTWORK FRONT :



Always fold socks as directed. Heels turning left and leg in front,- Foot at back.

FINISH : PLICK SURFACE:



Find correct RN and CA number in supplier manual under packing and labeling → special orders. Please center text, when correct number is added.

PACKAGING COLOR

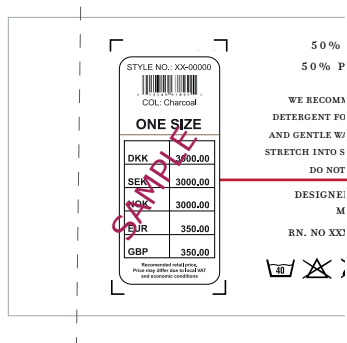
 Same white color as Lindbergh white

ARTWORK COLOR

 Same black color as Lindbergh white

<b>Label:</b> <b>SHINE ORIGINAL</b>	<b>Date: 06/02/2025</b> <b>Modification date:</b> <b>10 December 2025 9:22 am</b>	<b>Style no:</b>
<b>Description:</b> Socks 2 pack - Merino wool	<b>Labels instructions no.</b> SHO-9121B-2PK	<b>Design:</b> MKS

## Barcode for production :



Barcode Placement (for production Only)  
Place price Sticker at fixing Points.

## Oekotex print logo:

## Print : Info placed at side

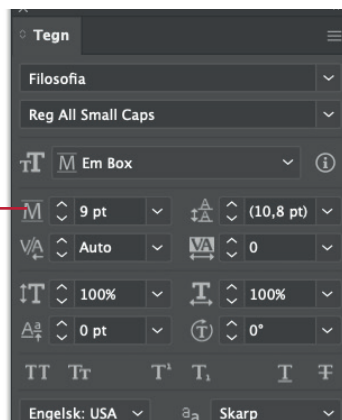
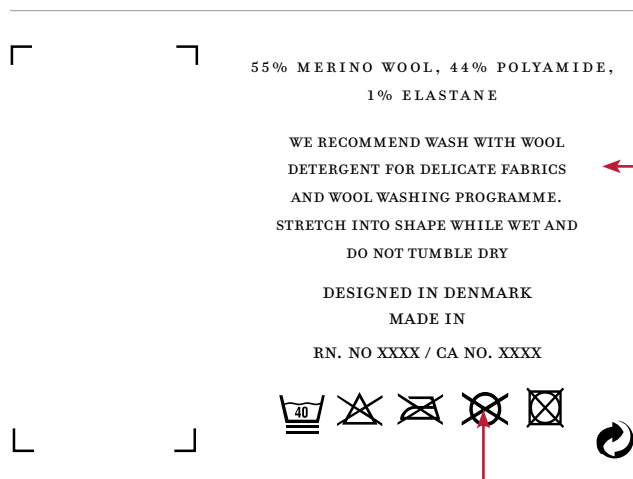


## Oeko-tex logo color ref:

Label Design Guideline  
Colour Values

	OEKO-TEX® Green	Black	White
PRINT			
Pantone U	Green U	Black U	-
Pantone C	Green C	Black C	-
CMYK	84 40 51 10	10 40 90 00	10 40 90 00
RAL DESIGN	170 40 45	000 90 00	000 90 00
DIGITAL			
RGB	r: 66 g: 85 b: 35	r: 0 g: 0 b: 0	r: 255 g: 255 b: 255
HEX	#004C8C	#000000	#FFFFFF

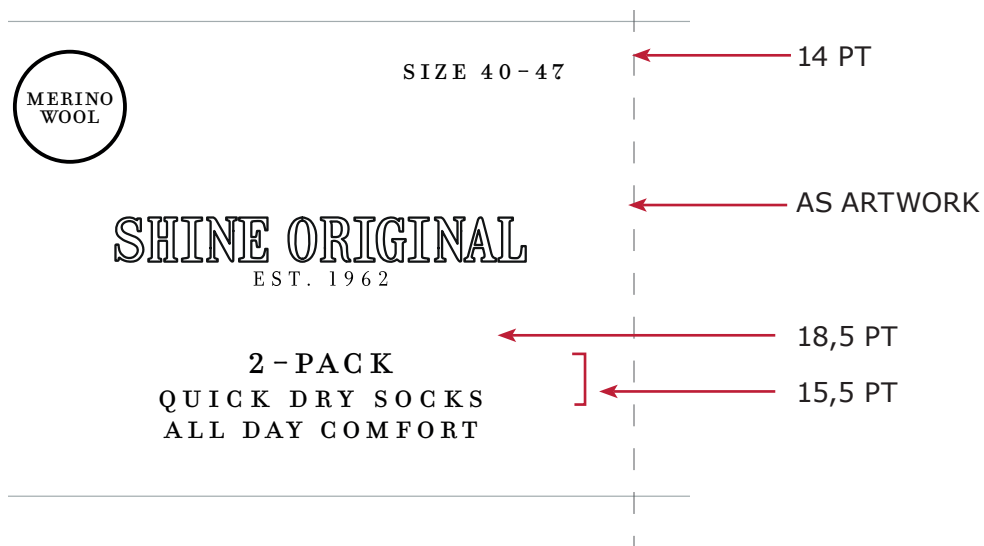
## Print : Info placed at back



USE CORRECT WASH CARE SYMBOLS ACCORDINGLY TO QUALITY

<b>Label:</b> <b>SHINE ORIGINAL</b>	<b>Date: 06/02/2025</b> <b>Modification date:</b> <b>10 December 2025 9:22 am</b>		<b>Style no:</b>
<b>Description:</b> Socks 2 pack - Merino wool	<b>Labels instructions no.</b> SHO-9121B-2PK		<b>Design:</b> <b>MKS</b>

**Print :**  
**Info placed at front**



**FONT REF**

