

<b>Label:</b> <b>SHINE ORIGINAL</b>	<b>Date: 06/02/2025</b> <b>Modification date:</b> <b>5 May 2026 11:24 am</b>	<b>Style no:</b>
<b>Description:</b> Socks 10 pack - low cut	<b>Labels instructions no.</b> SHO-9121I-10PK	<b>Design:</b> MKS/TMA

**SOCK TAG \_belly tag for 10-pack**  
**SHO-916I-10PK**

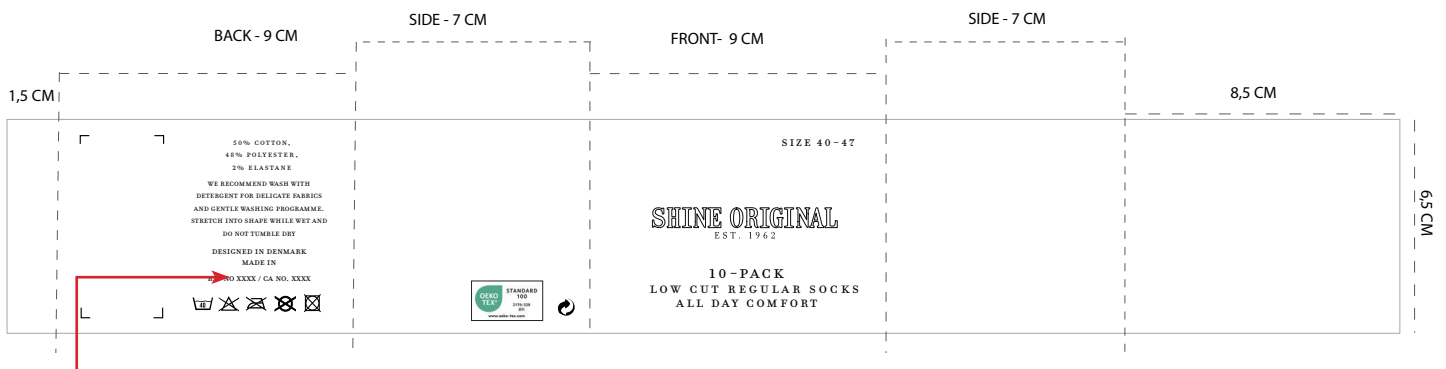


ARTWORK FRONT :



Always fold socks as directed. Heels turning left and leg in front,- Foot at back.

FINISH : PLICK SURFACE:



Find correct RN and CA number in supplier manual under packing and labeling → special orders. Please center text, when correct number is added.

PACKAGING COLOR

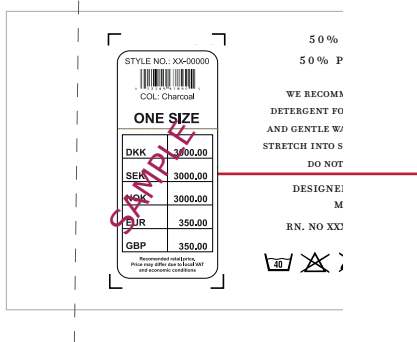
 Same white color as Lindbergh white

ARTWORK COLOR

 Same black color as Lindbergh white

<b>Label:</b> <b>SHINE ORIGINAL</b>	<b>Date: 06/02/2025</b> <b>Modification date:</b> <b>5 May 2026 11:24 am</b>		<b>Style no:</b>
<b>Description:</b> Socks 10 pack - low cut	<b>Labels instructions no.</b> SHO-9121I-10PK		<b>Design:</b> MKS/TMA

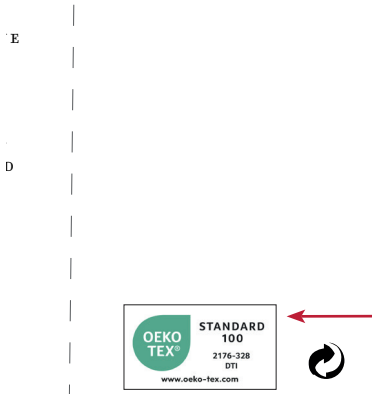
## Barcode for production :



Barcode Placement (for production Only)  
Place price Sticker at fixing Points.

## Oekotex print logo:

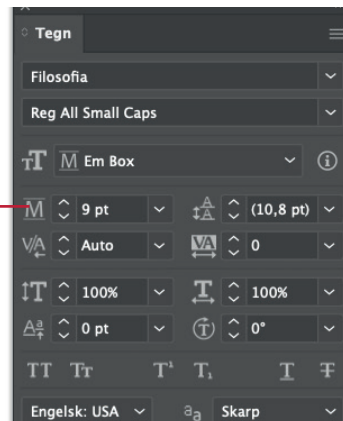
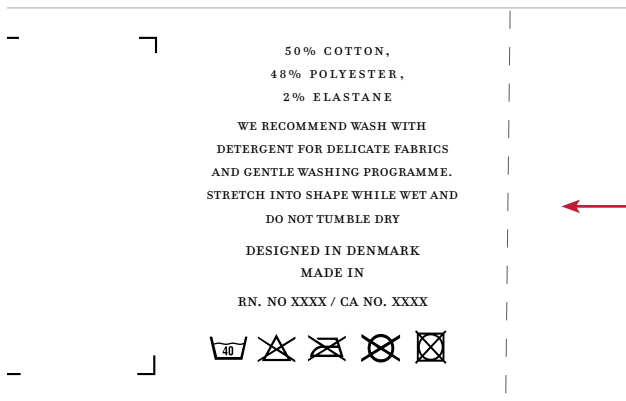
## Print : Info placed at side



## Oeko-tex logo color ref:

Label Design Guideline			
Colour Values			
	OEKO-TEX® Green	Black	White
PRINT			
Pantone U	Green U	Black U	-
Pantone C	Green C	Black C	-
CMYK	046 m0 y21 k0	0 m0 y0 k98	0 m0 y0 k0
RAL DESIGN	170 60 45	000 90 00	000 90 00
DIGITAL			
RGB	r0 g66 b35	r0 g0 b0	r255 g255 b255
HEX	#004ACB	#000000	#FFFFFF

## Print : Info placed at back



USE CORRECT WASH CARE SYMBOLS ACCORDINGLY TO QUALITY

<b>Label:</b> <b>SHINE ORIGINAL</b>	<b>Date: 06/02/2025</b> <b>Modification date:</b> <b>5 May 2026 11:24 am</b>		<b>Style no:</b>
<b>Description:</b> Socks 10 pack - low cut	<b>Labels instructions no.</b> SHO-9121I-10PK		<b>Design:</b> <b>MKS/TMA</b>

**Print :**  
**Info placed at front**



FONT REF

